

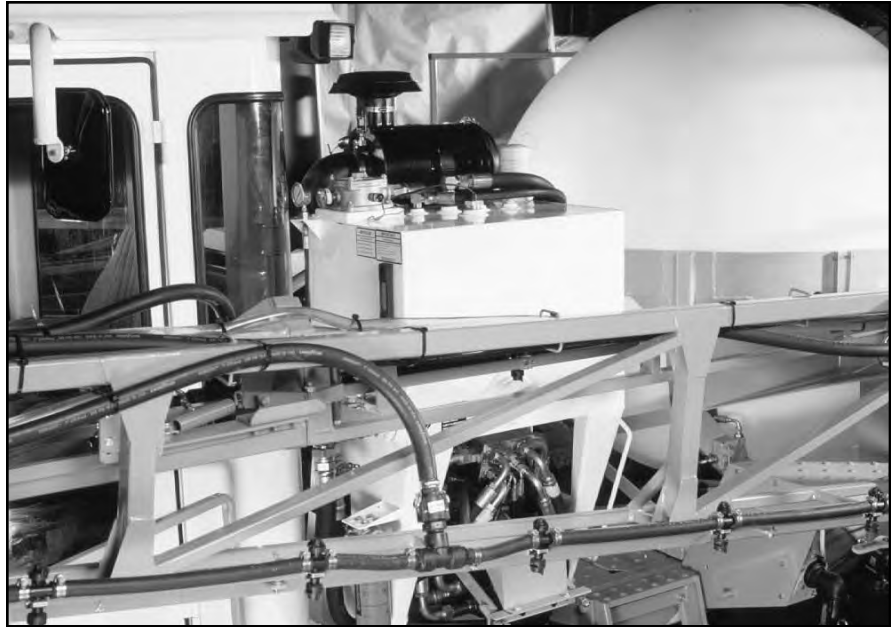
Superior Protection for Larger Engines

Radial Seal Sealing Technology Means Reliable Filtration and Quicker Service

The Donaldson two-stage FRG radial seal air cleaners provide improved reliability, better durability and reduced weight compared to axial seal style air cleaner designs. Choose from over 20 air cleaners that work in airflow ranges of 82 to 1600 cfm.

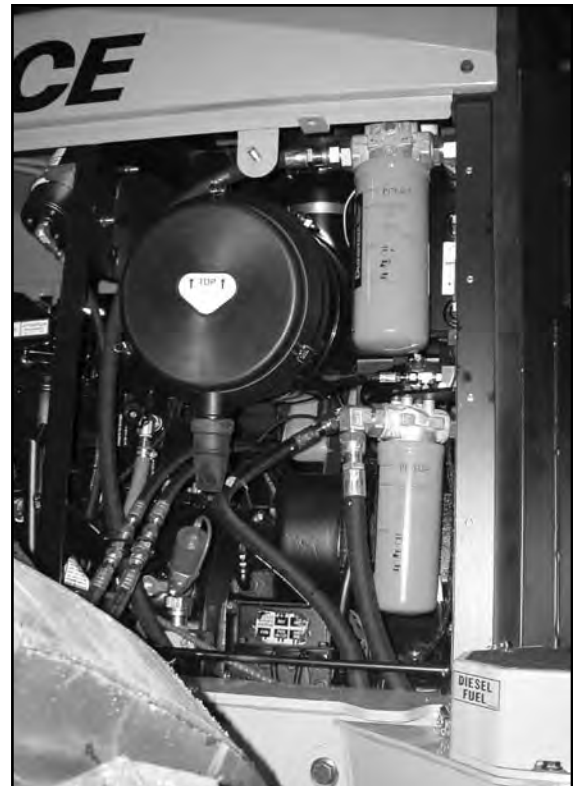
Two-Stage Filtration!

Both Style A and B have an integral pre-cleaning stage that separates up to 85% of the incoming dust. The primary filter stops the rest, resulting in engine air that is 99.99% free of dust!



The FRG Air Cleaner on this Tyler Ag Sprayer eliminates 99.99% of the dirt from the engine airstream, while providing up to 945 cfm airflow to the engine.

The two-stage FRG Air Cleaner in operation on a Prentice 490 Skidder.



Durable, Vibration Resistant Variety of Sizes in Two Separate Housing Styles

Applications

- Horizontal installation
- Medium and heavy dust environments
- **Style A** - From 82 to 795 cfm airflow throughput per air cleaner in body diameters ranging from 5" to 16" (127-406mm)
- **Style B** - From 270 to 1600 cfm airflow throughput per air cleaner in body diameters ranging from 10" to 18" (254-457mm)

Ideal for

- Construction equipment
- Agricultural machinery
- Mining equipment
- Off-highway vehicles

Air Cleaner Features

- Two stage filter system: the first stage removes up to 85% of incoming dust
 - The first stage in the Style A uses the angled vanes on the primary filter
 - The first stage in the Style B has a tangential air inlet
- Inlet on side, outlet on end (G flow)
- Already tapped to accept filter service indicator
- Vacuator™ Valve automatically releases the pre-cleaned dust
- Durable, long-lasting finish
 - Style A housing is metal and coated with a black, corrosion- and chemical-resistant polymer paint (service cover is accessed with clamp and bolt)
 - Style B is comprised of two materials: injection molded, high strength polymer service cover and a metal body (the service cover is accessed by latches)
- Mounting the unit directly to the engine is not recommended; excessive engine vibration can cause premature air cleaner structural failure

FRG Style A

The FRG Style A series replaces Donaldson's obsolete FHG series in size and airflow capacity.



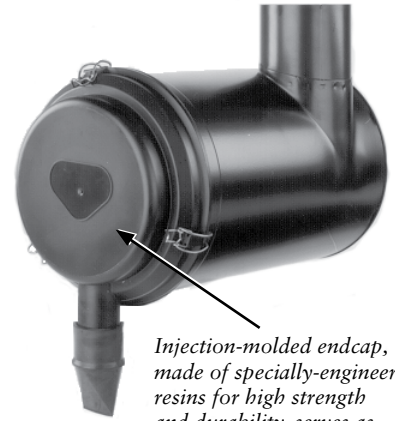
While it looks like an axial seal air cleaner on the outside, this new style housing is equipped with a radial seal style primary filter and an optional safety filter. Easy to service, one wing-bolt clamp to undo to access filter(s).

Filter Features

The radial seal filter inside the air cleaner is also quite different from the conventional filters. Its one piece, molded urethane endcaps encase the filter media and liners – reducing components, adding reliability and lowering cost. The glued-on gasket found on the metal end cap of conventional filters is gone – the inside surface of the filter's open end is actually the sealing surface. For added engine protection during filter service, consider a model with a safety filter.

FRG Style B

The FRG Style B series replaces Donaldson's obsolete FTG series in size and airflow capacity.



Injection-molded endcap, made of specially-engineered resins for high strength and durability, serves as the service cover. Filter changeout is easier than ever – just unsnap the latches to access the filter!

Accessories

Donaldson intake accessories for your FRG Air Cleaner can help overcome or prevent various problems. For instance:

- Mounting bands for FRGs must be ordered separately
- If the installed air cleaner will be exposed to rain, snow or debris, an **inlet cap** can prevent moisture ingestion.
- A **service indicator** measures the airflow restriction across the filter, thereby showing how much useful life the filter has left, and when to replace the filter cartridge (see Accessories section of this catalog)

When spec'ing an Air Cleaner . . .

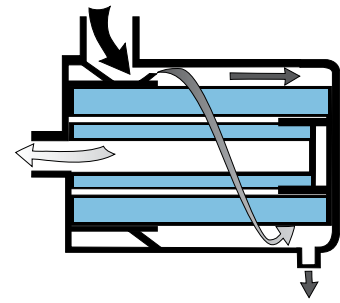
Determine the airflow requirements of your engine, then find the corresponding cfm airflow in the table at right. The restriction numbers (shown in inches of water) indicate the approximate initial restriction of each model air cleaner at that cfm. If there are two air cleaner models that fit your parameters, choosing the one with the lowest restriction will provide longest filter service life. When calculating total initial restriction of the entire air intake system, include the restriction caused by ducting, elbows, pre-cleaners, etc.

Initial Airflow Restriction

Airflow CFM @			Air Cleaner Model	Weight	
6"H ₂ O	8"H ₂ O	10"H ₂ O		lbs	kg
STYLE A - BOLT/CLAMP SERVICE COVER					
82	95	107	G052685	5.5	2.5
93	107	120	G052686	5.2	2.4
132	155	173	G065541	7.6	3.4
152	195	232	G065551	7.1	3.2
198	228	255	G080582	11.0	5.0
224	258	287	G080585	10.5	4.8
268	315	357	G090245	13.1	5.9
295	344	385	G090250	12.1	5.5
283	332	375	G100395	30.1	13.7
328	388	435	G100398	28.6	13.0
315	350	418	G120415	26.5	12.0
408	458	528	G120417	28.1	12.7
486	570	644	G140523	34.9	15.8
560	657	742	G140526	33.3	15.1
590	700	795	G160679	41.7	18.9
STYLE B - LATCH SERVICE COVER					
270	305	340	G100297	12.0	5.4
300	360	400	G110214	13.1	5.9
370	430	490	G110206	17.5	8.0
440	510	570	G130107	20.6	9.3
520	590	655	G130097	25.0	11.4
715	805	945	G150092	30.0	13.6
1220	1420	1600	G180031	44.0	20.0

Airflow Pattern "G"

Air in the side, out the end

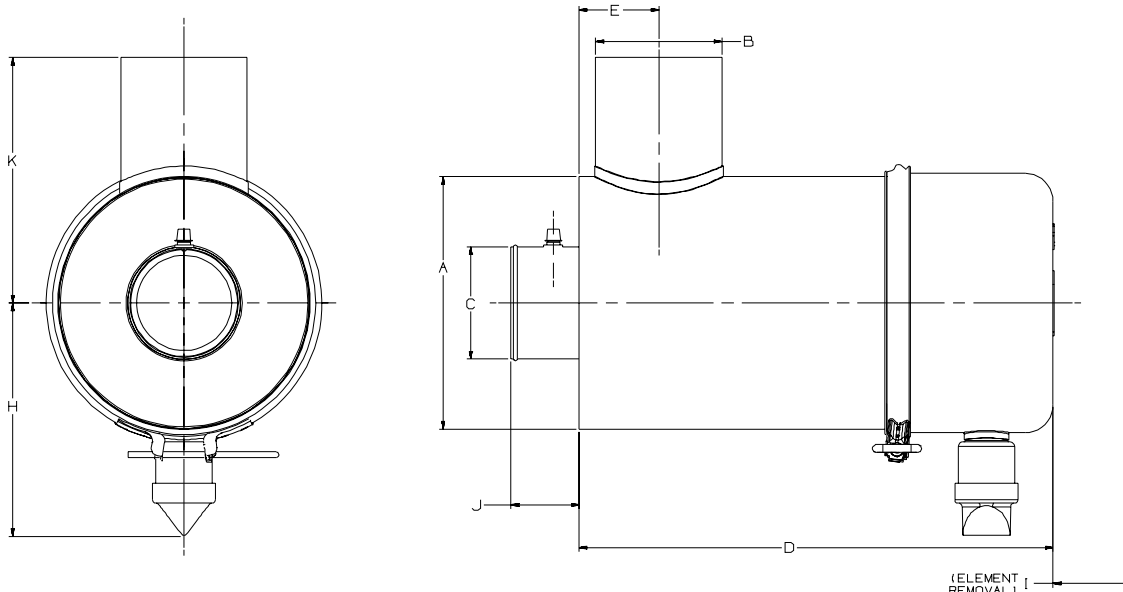


FRG Mounting Bands

- Two mounting bands are required for proper FRG installation (see service parts listing in this section).
- Durable, corrosion resistant, galvanized steel construction
- Engineered and tested to resist the adverse effects of vibration.
- Mounting band feet are designed to ensure maximum torque pressure, continuously.
- Dimensional information on these bands can be found in the accessories section, mounting bands.

FRG Specification Illustrations

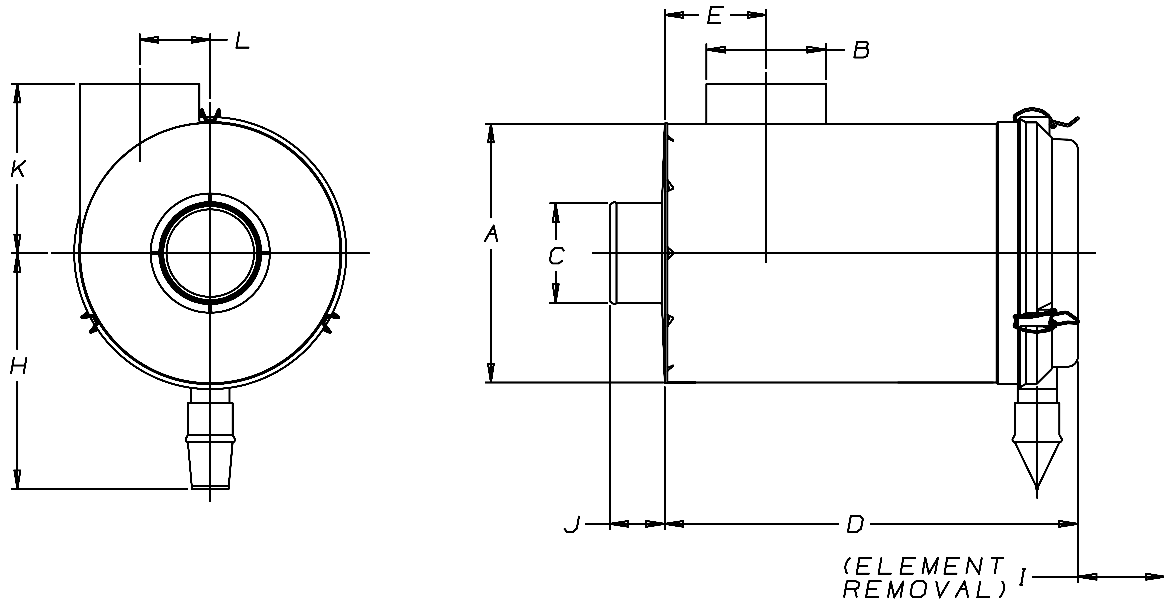
Style A - Bolt/Clamp Service Cover



MEDIUM DUST

FRG Specification Illustrations

Style B - Latch Service Cover



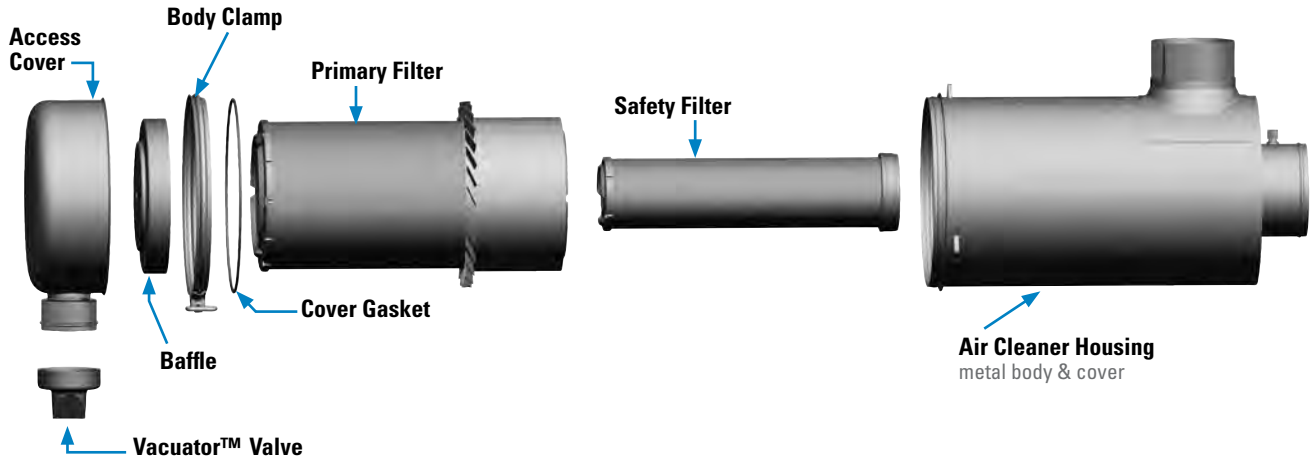
MEDIUM DUST

FRG Specifications

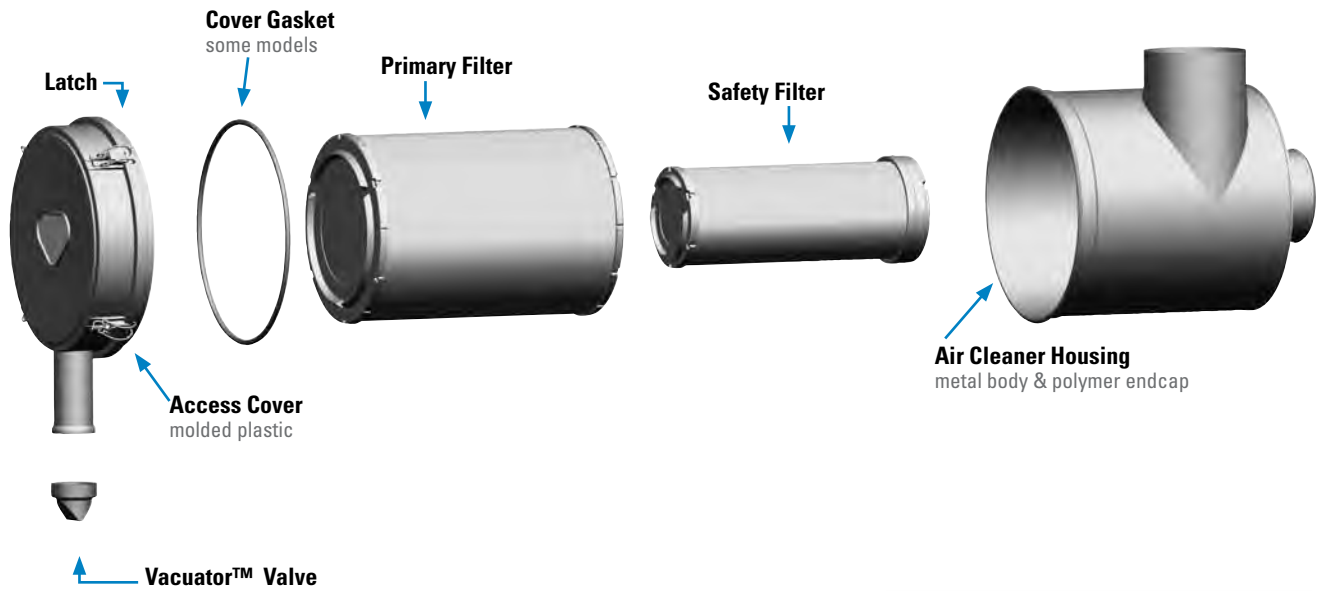
Air Cleaner Models	Body Diameter (A)		Inlet Diameter (B)		Outlet Diameter (C)		Housing Length (D)		Inlet Location (E)		Center Line to Valve (H)		Service Clearance (I)		Outlet Length (J)		Inlet Length (K)		Offset Inlet Location (L)		
	in	mm	in	mm	in	mm	in	mm	in	mm	in	mm	in	mm	in	mm	in	mm	in	mm	
STYLE A - BOLT/CLAMP SERVICE COVER																					
G052685	5.25	133	2.50	64	2.50	64	14.76	375	2.06	52	6.36	162	9.80	249	2.30	58	4.97	126	--	--	
G052686	5.25	133	2.50	64	2.50	64	14.76	375	2.06	52	6.36	162	9.80	249	2.30	58	4.97	126	--	--	
G065541	6.55	166	3.00	76	3.00	76	15.44	392	1.92	49	6.28	160	12.31	313	2.22	56	6.38	162	--	--	
G065551	6.55	166	3.00	76	3.00	76	15.44	392	1.92	49	6.28	160	12.31	313	2.22	56	6.38	162	--	--	
G080582	8.00	203	3.75	95	3.50	89	15.84	402	2.38	60	7.96	202	12.44	316	2.46	62	7.25	184	--	--	
G080585	8.00	203	3.75	95	3.50	89	15.84	402	2.38	60	7.96	202	12.44	316	2.46	62	7.25	184	--	--	
G090245	9.00	229	4.50	114	4.00	102	16.90	429	2.84	72	8.27	210	16.90	429	2.43	62	8.75	222	--	--	
G090250	9.00	229	4.50	114	4.00	102	16.90	429	2.84	72	8.27	210	16.90	429	2.43	62	8.75	222	--	--	
G100395	10.19	259	4.50	114	5.00	127	21.03	534	3.38	86	8.96	228	13.06	332	2.10	53	8.09	205	--	--	
G100398	10.19	259	4.50	114	5.00	127	21.03	534	3.38	86	8.96	228	13.06	332	2.10	53	8.09	205	--	--	
G120415	12.00	305	5.00	127	5.00	127	19.06	484	4.69	119	9.62	244	9.10	231	2.28	58	8.92	227	--	--	
G120417	12.00	305	5.00	127	5.00	127	19.06	484	4.69	119	9.62	244	9.10	231	2.28	58	8.92	227	--	--	
G140523	14.00	356	6.00	152	6.00	152	22.06	560	5.28	134	10.72	272	12.10	307	2.26	57	10.12	257	--	--	
G140526	14.00	356	6.00	152	6.00	152	22.06	560	5.28	134	10.72	272	12.10	307	2.26	57	10.12	257	--	--	
G160679	16.00	406	7.00	178	7.00	178	24.04	611	5.76	146	11.72	298	14.10	358	2.29	58	12.00	305	--	--	
STYLE B - LATCH SERVICE COVER																					
G100297	10.2	259	4.5	114	4.0	102	16.93	430	3.54	90	10.63	270	15.00	373	2.59	66	8.07	205	2.81	72	
G110214	11.0	279	5.0	127	4.5	114	13.78	350	4.13	105	10.81	275	17.00	428	2.64	67	7.50	191	2.96	75	
G110206	11.0	279	5.0	127	4.5	114	19.28	490	4.13	105	10.81	275	17.00	428	2.64	67	7.50	191	2.96	75	
G130107	13.0	330	6.0	152	5.0	127	16.73	425	5.22	132	11.85	301	18.00	450	2.64	67	8.50	216	3.54	90	
G130097	13.0	330	6.0	152	5.0	127	20.87	530	5.22	132	11.85	301	18.00	450	2.64	67	8.50	216	3.54	90	
G150092	15.0	381	7.0	178	6.0	152	20.87	530	5.51	140	13.31	338	19.00	482	2.75	70	9.50	241	4.03	102	
G180031	18.0	457	8.0	203	8.0	203	25.60	650	5.04	128	15.80	402	28.62	600	3.35	85	11.42	290	5.05	128	

FRG Service Parts

Style A - Bolt/Clamp Service Cover



Style B - Latch Service Cover



SERVICE PARTS NOTES:
 2 = Two required for proper installation
 3 = Shipped with air cleaner initially
 8 = Cover assembly includes latches but no Vacuator™ Valve

SM = Scheduled Maintenance
 ES = Extended Service
 HE = High Efficiency

MEDIUM DUST

FRG Service Parts

G052685 Style A

clamp.....	P002904
cover	P120279
filter, primary.....	P6000433
filter, safety.....	P6000473
mounting band.....	P0023482
Vacuator Valve	P158914

G052686 Style A

clamp.....	P002904
cover	P120279
filter, primary.....	P6000433
filter, safety (optional).....	P600047
mounting band.....	P0023482
Vacuator Valve	P158914

G065541 Style A

clamp.....	P002940
cover	P522133
filter, primary.....	P5492713
filter, safety.....	P5492773
mounting band.....	P0071912
Vacuator Valve	P158914

G065551 Style A

clamp.....	P002940
cover	P522133
filter, primary.....	P5492713
filter, safety (optional).....	P549277
mounting band.....	P0071912
Vacuator Valve	P158914

G080582 Style A

clamp.....	P003951
cover	P600321
filter, primary.....	P6014373
filter, safety.....	P6014763
mounting band.....	P0043072
Vacuator Valve	P158914

G080585 Style A

clamp.....	P003951
cover	P600321
filter, primary.....	P6014373
filter, safety (optional).....	P601476
mounting band.....	P0043072
Vacuator Valve	P158914

G090245 Style A

clamp.....	P102025
cover	P600657
filter, primary.....	P6012803
filter, safety.....	P6012863
mounting band.....	P0040732
Vacuator Valve	P158914

G090250 Style A

clamp.....	P102025
cover	P600657
filter, primary.....	P6012803
filter, safety (optional).....	P601286
mounting band.....	P0040732
Vacuator Valve	P158914

G100297 Style B

dust cup/cover.....	P5382008
filter, primary.....	P7810393
filter, safety.....	P7776393
gasket, cover	P537308
latch	P777366
mounting band.....	P0040762
Vacuator Valve	P776008

G100395 Style A

baffle, metal	P602211
clamp.....	P106071
dust cup/cover.....	P103827
filter, primary.....	P6017903
filter, safety.....	P7776393
o-ring.....	P101401
mounting band.....	P0040762
Vacuator Valve	P103198

G100398 Style A

baffle, metal	P602211
clamp.....	P106071
dust cup/cover.....	P103827
filter, primary.....	P6017903
filter, safety (optional).....	P777639
mounting band.....	P0040762
o-ring.....	P101401
Vacuator Valve	P103198

G110206 Style B

cover	P5384528
filter, primary-SM	P5329663
filter, primary- ES & HE.....	EAF5105
filter, safety.....	P5337813
gasket, cover	P526676
latch	P536439
mounting band.....	P0040792
Vacuator Valve	P158914

G110214 Style B

cover	P5384528
filter, primary.....	P5364573
filter, safety.....	P5364923
gasket, cover	P526676
latch	P536439
mounting band.....	P0040792
Vacuator Valve	P158914

G120415 Style A

baffle, metal	P106329
clamp.....	P121067
dust cup/cover.....	P109296
filter, primary.....	P6017673
filter, safety.....	P6017743
mounting band.....	H0003492
o-ring.....	P017804
Vacuator Valve	P103198

G120417 Style A

baffle, metal	P106329
clamp.....	P121067
dust cup/cover.....	P109296
filter, primary.....	P6017673
filter, safety (optional).....	P601774
mounting band.....	H0003492
o-ring.....	P017804
Vacuator Valve	P103198

G130097 Style B

cover	P5382598
filter, primary.....	P5378763
filter, safety.....	P5378773
gasket, cover	P537699
latch.....	P776033
mounting band.....	P0137222
Vacuator Valve	P776008

G130107 Style B

cover	P5382598
filter, primary.....	P5325033
filter, safety.....	P5325043
gasket, cover	P537699
latch.....	P776033
mounting band.....	P0137222
Vacuator Valve	P776008

G140523 Style A

baffle, metal	P106771
clamp.....	P100866
dust cup/cover.....	P109297
filter, primary.....	P5325033
filter, safety.....	P5325043
mounting band.....	H0003502
o-ring.....	P017335
Vacuator Valve	P103198

G140526 Style A

baffle, metal	P106771
clamp.....	P100866
dust cup/cover.....	P109297
filter, primary.....	P5325033
filter, safety (optional).....	P532504
mounting band.....	H0003502
o-ring.....	P017335
Vacuator Valve	P103198

G150092 Style B

cover	P7779208
filter, primary.....	P7778683
filter, safety.....	P7778693
latch.....	P776033
mounting band.....	P0168452
Vacuator Valve	P776008

G160679 Style A

baffle, metal	P106637
clamp.....	P100789
dust cup/cover.....	P106952
filter, primary.....	P5495233
filter, safety.....	P5495303
mounting band.....	H0003512
o-ring.....	P017336
Vacuator Valve	P103198

G180031 Style B

cover	P783185
filter, primary.....	P7810983
filter, safety.....	P7811023
mounting band.....	H7700372
Vacuator Valve	P105220