

## Horizontal Mount, Integral Vacuator™ Valve Aggressive Two-Stage Filtration for Large Construction & Mining Machines

### Upgrade Path

To upgrade to the newest technology, consider the Donaldson FRG Air Cleaner with Radial Seal Sealing Technology. Recommended replacement models are listed on the next page.

### Applications

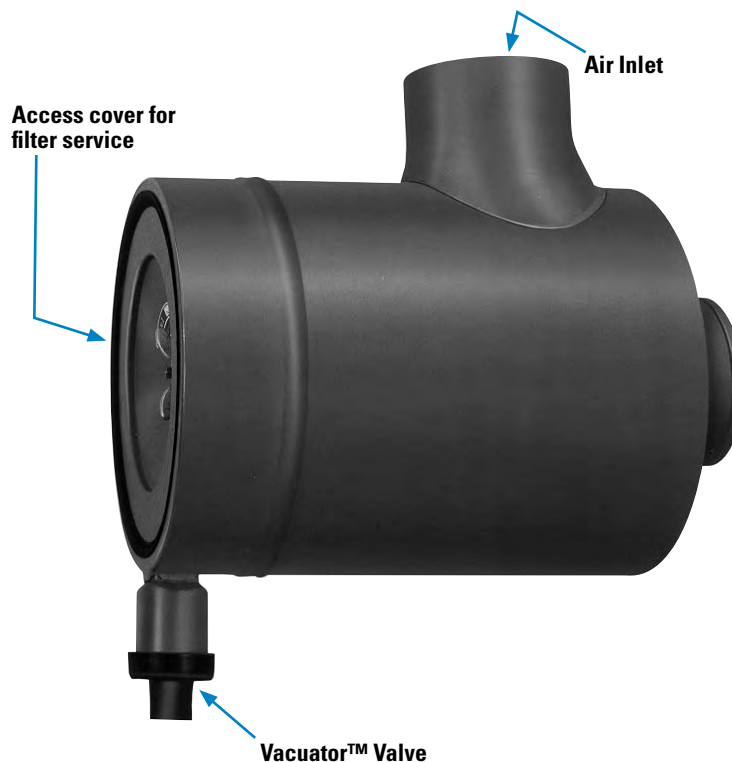
- Allows up to 1200 cfm airflow throughput per air cleaner
- Horizontal installation
- Designed for large industrial and construction machines: crawler tractors, crane loaders, excavators and air compressors with large engines operating in severe dust environments

### Air Cleaner Features

- Unique, flared inlet allows maximum airflow with low restriction
- 14" & 16" body diameters
- Two-stage air cleaning deals with very dusty environment:
  - (1) Built-in louver spins air to separate up to 85% of incoming dust before it reaches the filter
  - (2) Primary filter removes up to 99.99% of the remaining dust
- Built-in Vacuator™ Valve collects and releases pre-cleaned dust
- Safety filter on all models protects engine inlet during filter changeout
- Housing is metal and coated with a corrosion and chemical resistant polymer paint

### Filter Features

- Replacement filter choices include an extended service, high efficiency filter for restriction maintenance, and a standard life filter for scheduled maintenance



### Accessories

- See the Accessories section for details on Donaldson air intake add-ons that can enhance the performance of your system
- Each FVG is tapped to accept a filter service indicator
- Order mounting bands, hoods, and other accessories separately



*FVG air cleaners are used in tandem on this underground mining equipment to double the airflow throughput to the engine.*

## When spec'ing an Air Cleaner . . .

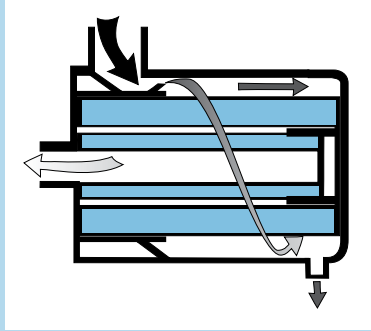
Service parts for this axial style air cleaner may not be available due to newer filtration technology and housing designs. Donaldson now recommends FRG radial seal style air cleaners for new applications. If you do prefer a newer style filtration system, see the recommended upgrade path table on the right.

## Initial Airflow Restriction

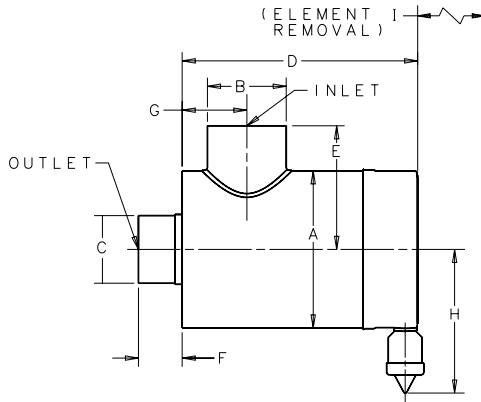
Air Cleaner Model	CFM @ "H <sub>2</sub> O		
	6"	8"	10"
G140195	690	810	910
G160376	730	880	1000
G160587	930	1070	1200

## Airflow Pattern "G"

Air in the side, out the end



## FVG Cycloflow™ Specification Illustration



## Recommended Upgrade Path

Current FVG	Upgrade	Style
G140195	G150092	FRG
G160376	G150092	FRG
G160587	G180031	FRG

## FVG Specifications

Air Cleaner Models	Body Diameter (A)		Inlet Diameter (B)		Outlet Diameter (C)		Length (D)		Inlet Length (E)		Inlet Length (F)		Inlet Length (G)		Service Clearance (H)		Service Clearance (I)		Weight	
	in	mm	in	mm	in	mm	in	mm	in	mm	in	mm	in	mm	in	mm	in	mm	lbs	kg
G140195	13.95	354	7.00	178	6.00	152	20.87	530	10.98	279	3.88	99	5.75	146	12.71	323	20.72	526	48	22
G160376	16.00	406	7.00	178	7.00	178	20.87	530	13.00	330	3.88	99	5.28	134	13.80	351	20.72	526	62	28
G160587	16.00	406	7.00	178	7.00	178	24.87	632	13.00	330	3.88	99	5.75	146	13.80	351	24.50	622	66	30

## FVG Service Parts

### G140195

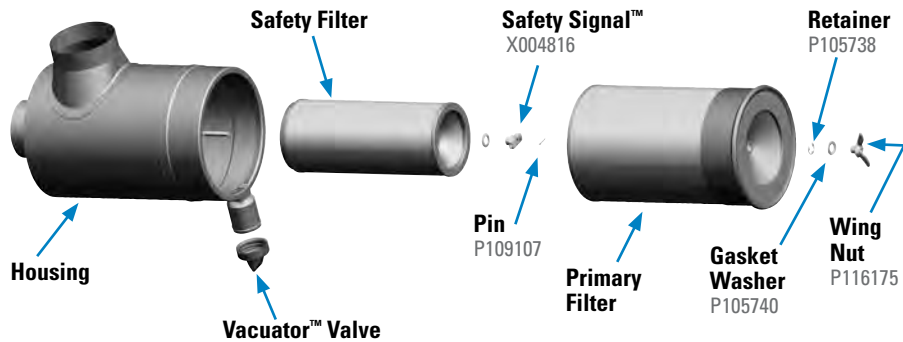
- filter, primary - SM ..... P181043
- filter, primary - ES & HE..... EAF5043
- filter, primary..... P182043 .....3
- filter, safety ..... P124860 .....3
- mounting band..... H000350 .....2
- Vacuator Valve ..... P103198

### G160376

- filter, primary..... P124867 .....3
- filter, safety..... P124866 .....3
- mounting band..... H000351 .....2
- Vacuator Valve ..... P103198

### G160587

- filter, primary - SM ..... P181049
- filter, primary - ES & HE..... EAF5049
- filter, primary..... P182049 .....3
- filter, safety ..... P116446 .....3
- mounting band..... H000351 .....2
- Vacuator Valve ..... P105220



### NOTES:

- 2 = Two required for proper installation
- 3 = Shipped with air cleaner initially

ES = Extended Service  
HE = High Efficiency  
SM = Scheduled Maintenance

MEDIUM DUST