

Looking for the EBA Cylindrical models?

The four models previously available have been replaced by a more reliable, radial seal style air cleaner design. The ERA design is a direct replacement to the older axial seal air cleaner models (see page 37).

A110009 use A110052

A130045 use A130115

A150039 use A150141

A150128 use A150138

When spec'ing an Air Cleaner . . .

Service parts for this axial style air cleaner may not be available due to newer filtration technology and housing designs. Donaldson now recommends radial seal style air cleaners for new applications.

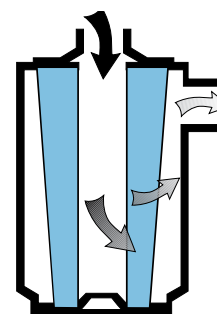
If you do prefer this air cleaner style, please use the air cleaner selection steps outlined on the inside cover to determine which air cleaner is best for your engine.

Initial Airflow Restriction

CFM @ "H2O			Air Cleaner Model
6"	8"	10"	
STYLE KPI			
1150	1300	1475	A112018
STYLE KPII			
875	1000	1130	A092037
1140	1300	1450	A112078
1400	1640	1850	A132001

Airflow Pattern "A"

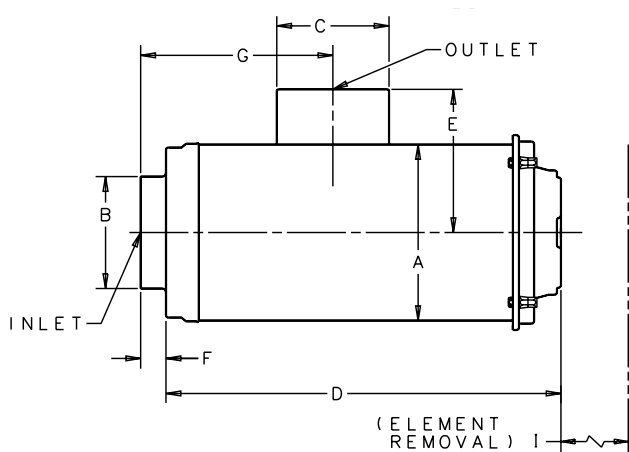
Air in the end, out the side



EBA Konepac™ Specification Illustrations

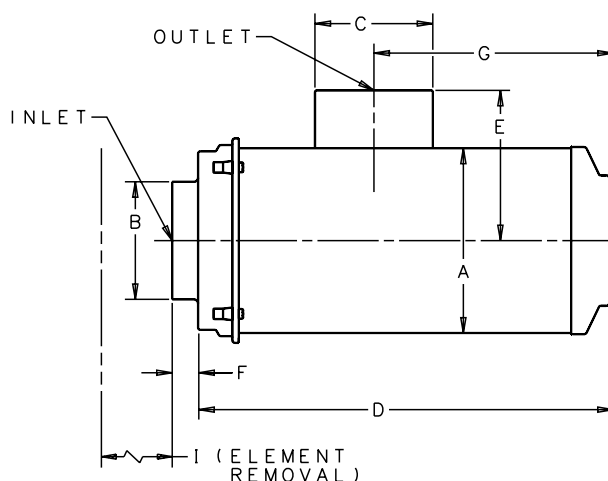
Style Konepac I (KPI)

Service cover opposite the inlet end



Style Konepac II (KPII)

Service cover on inlet end



EBA Konepac™ Specifications

Air Cleaner Models	Body Diameter (A)		Inlet Diameter (B)		Outlet Diameter (C)		Length (D)		(E)		Inlet Length (F)		(G)		Service Clearance (I)		Service Indicator Tap	Weight	
	in	mm	in	mm	in	mm	in	mm	in	mm	in	mm	in	mm	in	mm		lbs	kg
STYLE KPI																			
A112018	11.00	279	7.00	178	7.00	178	28.62	727	8.95	227	1.58	40	22.20	564	28.00	711	Yes	39.0	17.8
STYLE KPII																			
A092037	9.00	229	6.00	152	6.00	152	28.63	727	7.85	199	1.18	30	10.00	443	27.62	702	Yes	21.5	9.5
A112078	11.00	279	7.00	178	7.00	178	28.67	728	8.95	227	1.58	40	8.00	203	28.00	711	Yes	30.0	13.6
A132001	13.00	330	8.00	203	8.00	203	28.59	726	10.00	254	2.38	60	7.50	191	28.00	711	No	42.0	19.0



Because of the cone-shaped filter inside the housing, EBA Konepac™ is smaller in size compared to the ERA, without sacrificing airflow. This allows trucks to meet width requirements in all states.

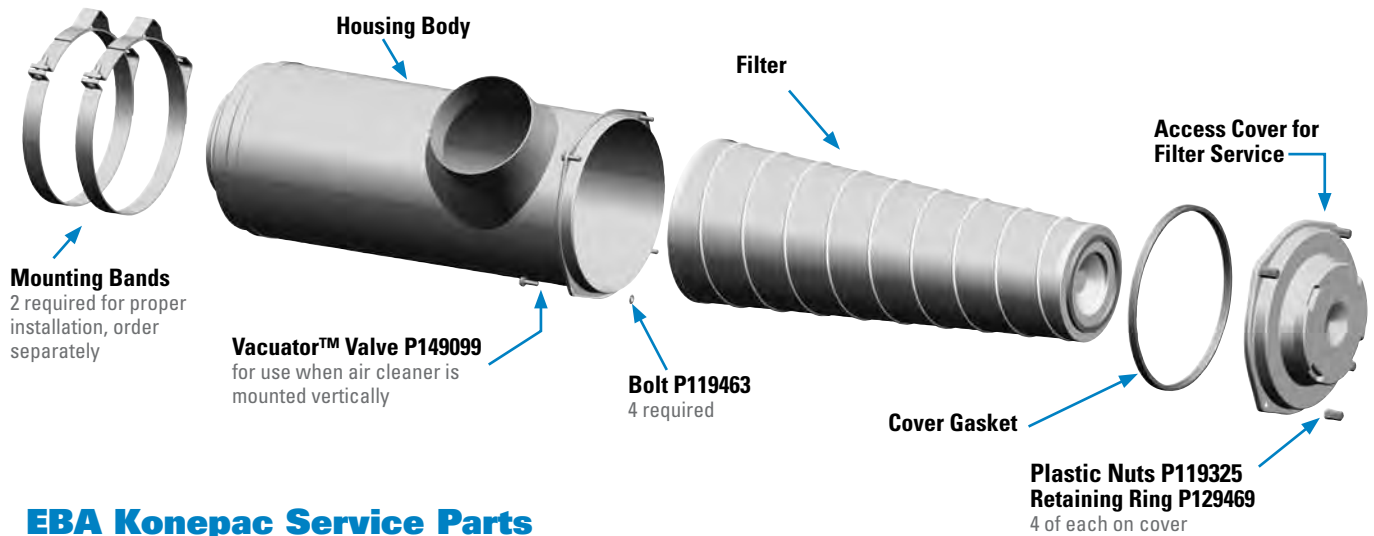


Picture of A112018 air cleaner with service cover on the opposite end of the inlet.

LIGHT DUST

EBA Konepac Service Parts

(KPII style shown)



EBA Konepac Service Parts

A092037	Style KPII
filter, primary	P140822
filter, primary - ES & HE.....	EAF5025
filter, primary, treated	P1294721,3
mounting band.....	P0040732

A112018	Style KPI
filter, primary	P1510973
filter, primary - ES & HE.....	EAF5024
filter, primary, treated	P1293961
gasket, cover	P155211
mounting band.....	P0040792

A112078	Style KPII
filter, primary	P151097
filter, primary - ES & HE.....	EAF5024
filter, primary, treated	P1293961,3
gasket, cover	P155211
mounting band.....	P0040792

A132001	Style KPII
filter, primary	P1412283
filter, primary - ES & HE.....	EAF5026
gasket, cover	P155264
mounting band.....	P0137222

NOTES:
 1 = Filter is treated with chemical for carbon resistance and is not cleanable
 2 = Two required for proper installation
 3 = Shipped with air cleaner initially
 ES= Extended Service
 HE= High Efficiency