

We Set the Standard for Liquid Filtration Performance



When you are looking for improved performance, look for Donaldson lube, fuel and hydraulic filters with synthetic media – they are easy to spot; they carry our Synteq™ brand name!

Synteq™ for Lube Filtration

When an application requires higher efficiency filtration than cellulose filter media can deliver, we use Synteq. Synteq captures more and smaller contaminant than cellulose.

Synteq™ for Fuel Filtration

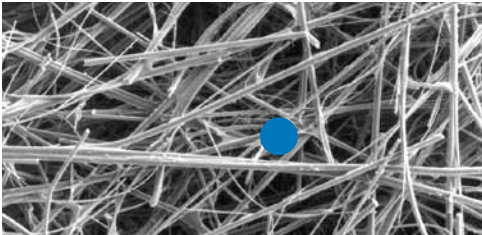
This proven filter media technology is specifically designed to remove water and contaminant from fuel systems. Synteq can be used with other technologies such as our Twist&Drain™ fuel filter water separators. In comparison to silicone treated cellulose media, Synteq coalesces a greater amount of emulsified water.

Shoptalk



INNOVATION

Synteq Lube



The microscopic photo of our Synteq lube filter media shows the consistency in fiber size and composition. The blue circle in the picture above represents the diameter of a 20 micron particle easily captured by the media.

Synteq Fuel



Synteq's double-layered fuel media has increased particulate holding capacity and is a high performance water separator. It has the ability for high efficiency emulsified water separation and can be used in both the suction and pressure sides of fuel systems. The polyester layer provides improved water separation and dirt holding capacity performance, making it an ideal choice for critical applications or extended service intervals.

More information on Synteq filtration can be found at <http://www.donaldson.com/en/engine/support/datalibrary/034118.pdf>

Shoptalk



Donaldson®

Donaldson Company, Inc.
 US Toll free: 866-759-4015
 Phone: 952-887-3699
www.shoptalk.donaldson.com