

Reduce Exhaust Leaks



The Donaldson Stepped SealClamp™, available from 2.5" to 6.0" diameters, has a unique stepped seal that provides 360° sealing not available in competitive clamps. It's now easier to install, is lighter in weight and has fewer parts.

Features:

- Pre-assembled for easy installation
- V-groove installation indicator
- 360° stepped shape improves joint seal
- .14 - .20 lbs. lighter than other brands

Benefits:

- Requires less torque than other brands
- Groove provides a visual reference to proper torque and tightening
- Reduces exhaust leaks and noise
- One wrench installation

Shoptalk

TRUCKING



MINING

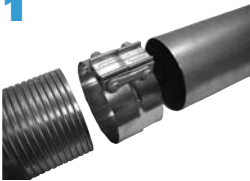


CONSTRUCTION



Three Simple Installation Steps

1



Position the SealClamp over the smallest tube. The larger end of the clamp must be on the overlapping tube or flex.

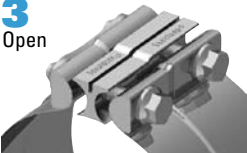
2



Locate the step of the clamp to the overlapping tube at the joint.

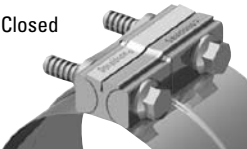
3

Open



Using the groove as a visual guide, **alternately** tighten bolts until the groove is approximately half closed (~50 ft. lbs).

Closed



Note: Do not exceed 70 ft. lbs. torque as clamp damage may occur.

More information on Stepped SealClamp™ exhaust clamps is located at

www.donaldson.com/en/exhaust/support/datalibrary/000213.pdf

Shoptalk



Donaldson®

Donaldson Company, Inc.
 US Toll free: 866-759-4015
 Phone: 952-887-3699
www.shoptalk.donaldson.com