

- Lightweight
- Sturdy
- One Piece Construction

Use the initial restriction table if your specing an air cleaner or for a direct replacement to Parker, select the air cleaner style tables.

### Initial Restriction

| Airflow                        |         | Air Cleaner Model |
|--------------------------------|---------|-------------------|
| 350 cfm @ 8" H <sub>2</sub> O  | P537451 | ECO-SE            |
| 510 cfm @ 8" H <sub>2</sub> O  | P537452 | ECO-SE            |
| 800 cfm @ 8" H <sub>2</sub> O  | P613679 | ECO-SE            |
| 840 cfm @ 8" H <sub>2</sub> O  | P537453 | ECO-SE            |
| 960 cfm @ 8" H <sub>2</sub> O  | P537454 | ECO-SE            |
| 1000 cfm @ 5" H <sub>2</sub> O | P537447 | ECOLITE           |
| 1000 cfm @ 6" H <sub>2</sub> O | P527586 | ECO-CM            |
| 1000 cfm @ 7" H <sub>2</sub> O | P524837 | ECO-II            |
| 1100 cfm @ 6" H <sub>2</sub> O | P537450 | ECO-CM            |
| 1200 cfm @ 5" H <sub>2</sub> O | P537448 | ECOLITE           |
| 1200 cfm @ 6" H <sub>2</sub> O | P154927 | ECO-II            |
| 1230 cfm @ 8" H <sub>2</sub> O | P607373 | ECO-SE            |
| 1400 cfm @ 7" H <sub>2</sub> O | P524838 | ECO-II            |
| 1500 cfm @ 5" H <sub>2</sub> O | P537449 | ECOLITE           |
| 1500 cfm @ 7" H <sub>2</sub> O | P528722 | ECO-II            |
| 1530 cfm @ 8" H <sub>2</sub> O | P537456 | ECO-SM            |
| 1550 cfm @ 8" H <sub>2</sub> O | P537455 | ECO-SM            |

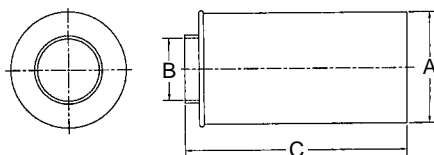
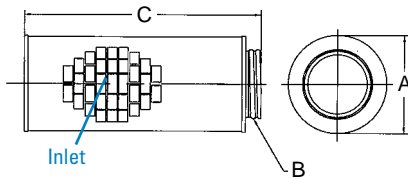
### ECO®-II

| Parker Number | Donaldson Number | Body Dia. (A) |     | Body Length (C) |     | Inlet | Outlet Dia. (B) |     |
|---------------|------------------|---------------|-----|-----------------|-----|-------|-----------------|-----|
|               |                  | in            | mm  | in              | mm  |       | in              | mm  |
| 071338001     | P524837          | 9.75          | 248 | 24.0            | 610 | Grid  | 6.0             | 152 |
| 071338002     | P154927          | 11.0          | 279 | 24.0            | 610 | Grid  | 7.0             | 178 |
| 071338003     | P524838          | 13.5          | 343 | 24.0            | 610 | Grid  | 7.0             | 178 |
| 071338004     | P528722          | 13.5          | 343 | 18.0            | 457 | Grid  | 7.0             | 178 |

### ECO®-SE

| Parker Number | Donaldson Number | Body Dia. (A) |     | Body Length (C) |     | Inlet Dia. |      | Outlet Dia. (B) I.D. |    |
|---------------|------------------|---------------|-----|-----------------|-----|------------|------|----------------------|----|
|               |                  | in            | mm  | in              | mm  | in         | mm   | in                   | mm |
| 114500001     | P537451          | 6.75          | 171 | 14.2            | 361 | End Perf   | 3.0  | 76                   |    |
| 114500002     | P537452          | 7.75          | 197 | 17.2            | 437 | End Perf   | 4.0  | 102                  |    |
| 114500003     | P537453          | 9.67          | 246 | 20.2            | 513 | End Perf   | 5.0  | 127                  |    |
| 114880003     | P537454          | 9.70          | 246 | 18.1            | 460 | 6.0* 152*  | 5.0  | 127                  |    |
| 114880005     | P613679          | 7.75          | 197 | 17.20           | 437 | 6.0* 152*  | 4.00 | 102                  |    |
| 400292000     | P607373          | 11.50         | 292 | 16.88           | 429 | 6.0* 152*  | 7.00 | 178                  |    |

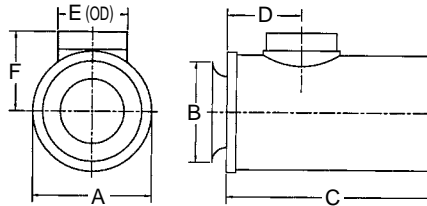
\* side inlet (not illustrated)



LIGHT DUST

### ECO®-CM

| Parker Number | Donaldson Number | Body Dia. (A) |     | Body Length (C) |     | Outlet Dia. (E) |     | Inlet Dia. (B) |     | (D)  |     | (F)  |     |
|---------------|------------------|---------------|-----|-----------------|-----|-----------------|-----|----------------|-----|------|-----|------|-----|
|               |                  | in            | mm  | in              | mm  | in              | mm  | in             | mm  | in   | mm  | in   | mm  |
| 078897002     | P527586          | 11.0          | 279 | 24.0            | 610 | 6.0             | 152 | 8.0            | 203 | 18.5 | 470 | 8.9  | 226 |
| 078897001     | P537450          | 13.5          | 343 | 24.0            | 610 | 7.0             | 178 | 8.0            | 203 | 5.5  | 140 | 11.1 | 282 |



### Competitive Cross Reference

|                |         |
|----------------|---------|
| <b>Baldwin</b> |         |
| PA2650.....    | P154927 |
| PA2721.....    | P537447 |
| PA2722.....    | P537448 |
| PA2723.....    | P537449 |
| PA2724.....    | P524838 |
| PA2731.....    | P537450 |
| PA2874.....    | P527586 |
| PA2875.....    | P528722 |
| PA2876.....    | P524837 |
| PA3493.....    | P537454 |
| PA3554.....    | P537451 |
| PA3555.....    | P537452 |
| PA3556.....    | P537453 |

|                   |         |
|-------------------|---------|
| <b>Fleetguard</b> |         |
| AH1103.....       | P154927 |
| AH1104.....       | P537447 |
| AH1105.....       | P537448 |
| AH1106.....       | P537449 |
| AH1135.....       | P524838 |
| AH1135F.....      | P524838 |
| AH1183.....       | P528722 |
| AH1184.....       | P537450 |
| AH1191.....       | P537451 |
| AH1192.....       | P537452 |
| AH1193.....       | P537453 |
| AH1194.....       | P524837 |
| AH1197.....       | P537454 |
| AH19014.....      | P537455 |
| AH19015.....      | P537456 |

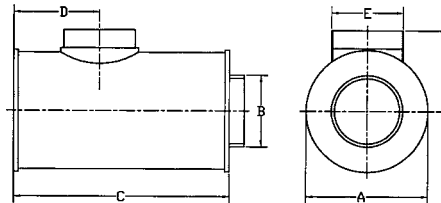
|             |         |
|-------------|---------|
| <b>Fram</b> |         |
| CA3770..... | P154927 |
| CA6622..... | P524837 |
| CA6623..... | P524838 |
| CA6624..... | P528722 |
| CA6854..... | P537451 |
| CA6855..... | P537453 |
| CA7229..... | P537447 |
| CA7230..... | P537448 |
| CA7231..... | P537449 |
| CA8129..... | P537452 |
| CA8131..... | P537450 |

|                    |         |
|--------------------|---------|
| <b>Luber-finer</b> |         |
| LAF1799.....       | P528722 |
| LAF1821.....       | P537450 |
| LAF1825.....       | P527586 |
| LAF1828.....       | P537447 |
| LAF1844.....       | P537449 |
| LAF1848.....       | P537448 |
| LAF1934.....       | P537454 |
| LAF2521.....       | P537453 |
| LAF8002.....       | P154927 |
| LAF8003.....       | P524838 |

|             |         |
|-------------|---------|
| <b>Wix</b>  |         |
| 46743.....  | P537451 |
| 46748.....  | P537454 |
| 46755.....  | P537453 |
| 46759.....  | P537452 |
| 46848.....  | P524837 |
| 46849.....  | P528722 |
| 46850.....  | P154927 |
| 46851.....  | P524838 |
| 46857.....  | P537455 |
| 46858.....  | P537456 |
| 46891.....  | P537447 |
| 46893.....  | P537448 |
| 46895.....  | P537449 |
| 46897.....  | P537450 |
| 546755..... | P537453 |

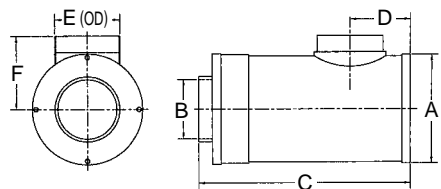
### ECOLITE®

| Parker Number | Donaldson Number | Body Dia. (A) |     | Body Length (C) |     | Inlet Dia. (E) |     | Outlet Dia. (B) |     | (D) |     | (F)  |     |
|---------------|------------------|---------------|-----|-----------------|-----|----------------|-----|-----------------|-----|-----|-----|------|-----|
|               |                  | in            | mm  | in              | mm  | in             | mm  | in              | mm  | in  | mm  | in   | mm  |
| 062891001     | P537447          | 9.75          | 248 | 24.0            | 610 | 6.0            | 152 | 6.0             | 152 | 5.5 | 140 | 6.75 | 171 |
| 062891002     | P537448          | 11.0          | 279 | 24.0            | 610 | 7.0            | 178 | 7.0             | 178 | 5.5 | 140 | 7.8  | 198 |
| 062891003     | P537449          | 13.5          | 343 | 24.0            | 610 | 7.0            | 178 | 7.0             | 178 | 5.5 | 140 | 9.1  | 231 |



### ECO®-SM

| Parker Number | Donaldson Number | Body Dia. (A) |     | Body Length (C) |     | Inlet Dia. (E) |     | Outlet Dia. (B) |     | (D) |     | (F) |     |
|---------------|------------------|---------------|-----|-----------------|-----|----------------|-----|-----------------|-----|-----|-----|-----|-----|
|               |                  | in            | mm  | in              | mm  | in             | mm  | in              | mm  | in  | mm  | in  | mm  |
| 099842009     | P537455          | 13.5          | 343 | 16.8            | 427 | 7.0            | 178 | 7.0             | 178 | 5.5 | 140 | 8.6 | 219 |
| 099842010     | P537456          | 13.5          | 343 | 16.8            | 427 | 7.0            | 178 | 7.0             | 178 | 9.5 | 241 | 8.6 | 219 |



ECO and ECOLITE are registered trademarks of Parker-Hannifin Corp., Racor Division