

Protection Against Rain & Debris Ingestion

- Protects engine air intake from rain, snow, birds, and other large contaminants
- Mounts on stack or directly to air cleaner for on-road and off-road equipment
- Four styles in a wide variety of sizes
- Installs easily with one clamp. Clamp included with hood on styles B, C and D



Style A



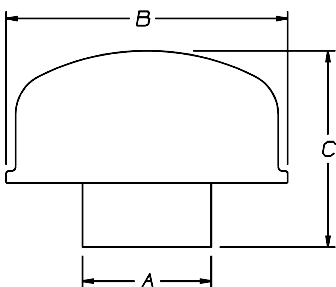
Style B



Style C



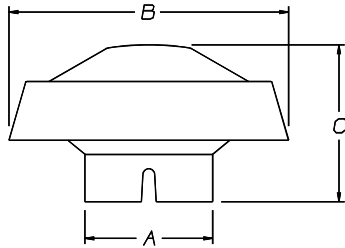
Style D



Inlet Hood - Style A¹

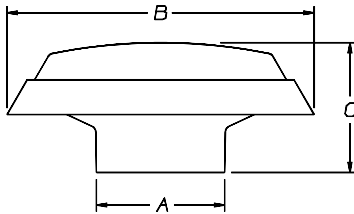
Fits O.D. (A)		Hood Dia. (B)		Height (C)		Add to Stack		Mat'l	Weight		Part Number
inch	mm	inch	mm	inch	mm	inch	mm		lbs	kgs	
1.75	44	4.13	105	3.31	84	2.75	70	Metal	0.50	0.22	X002017
2.00	51	4.13	105	3.25	83	2.75	70	Metal	0.50	0.22	X002018
2.25	57	5.24	133	3.97	101	3.50	89	Metal	0.80	0.36	X002019
2.50	64	5.25	133	3.97	101	3.50	89	Metal	0.80	0.36	X001966
3.00	76	6.13	156	5.06	129	3.75	95	Metal	1.10	0.50	X002014
3.75	95	8.06	205	7.75	197	6.00	152	Metal	2.10	0.95	X001988
4.00	102	8.06	205	7.88	200	6.00	152	Metal	2.00	0.90	X002015

¹ - Clamps must be ordered separately for this style.



Inlet Hood - Style B

Fits O.D. (A)		Hood Dia. (B)		Height (C)		Add to Stack		Mat'l	Weight		Part Number
inch	mm	inch	mm	inch	mm	inch	mm		lbs	kgs	
1.75	44	6.00	152	3.37	86	2.05	52	Plastic	0.20	0.09	H002068
2.00	51	6.00	152	3.31	84	2.50	64	Plastic	0.20	0.09	H001377
2.50	64	6.00	152	3.31	84	2.50	64	Plastic	0.20	0.09	H001378
3.00	76	6.00	152	3.31	84	2.50	64	Plastic	0.20	0.09	H001379

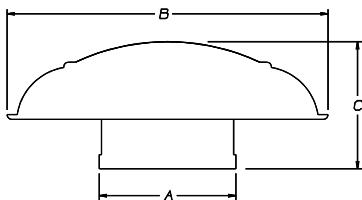


Inlet Hood - Style C

Fits O.D. (A)		Hood Dia. (B)		Height (C)		Add to Stack		Mat'l	Weight		Part Number
inch	mm	inch	mm	inch	mm	inch	mm		lbs	kgs	
3.00	76	11.50	292	5.88	149	3.63	92	Plastic	1.10	0.50	H001063
3.75	95	11.50	292	5.13	130	3.63	92	Plastic	0.80	0.36	H000466
		11.50	292	5.13	130	3.63	92	Plastic	1.00	0.45	H000473 ²
4.00	102	11.50	292	5.06	129	3.38	86	Plastic	0.90	0.40	H000467
		11.50	292	5.06	129	3.38	86	Plastic	1.00	0.45	H000472 ²
4.50	114	11.50	292	4.88	124	3.38	86	Plastic	0.80	0.36	H000468
		11.50	292	4.88	124	3.38	86	Plastic	1.00	0.45	H000471 ²
5.00	127	11.50	292	4.88	124	3.31	84	Plastic	0.80	0.36	H000469
		11.50	292	4.88	124	3.31	84	Plastic	1.00	0.45	H000470 ²
		16.00	407	5.75	146	3.31	104	Plastic	1.80	0.80	H000605 ²
5.50	140	16.00	407	5.75	146	4.94	125	Plastic	1.80	0.80	H000604 ²
6.00	152	16.00	407	5.75	146	4.94	125	Plastic	1.80	0.80	H000606 ²
		13.00	330	4.06	103	2.69	68	Bright	1.50	0.68	H001756
		16.00	406	5.69	145	4.25	108	Bright	1.50	0.68	H001948 ²
7.00	178	12.81	325	4.81	122	3.44	87	Bright	1.50	0.68	H001773
		13.00	330	3.88	99	2.50	64	Bright	1.50	0.68	H001742
		16.00	406	5.75	146	4.09	104	Plastic	1.80	0.80	H000607 ²
		16.00	406	5.69	145	4.25	108	Bright	1.50	0.68	H001947 ²
8.00	203	16.00	406	6.19	157	4.69	119	Plastic	1.80	0.80	H001053 ²
		16.00	406	6.19	157	4.60	117	Bright	1.50	0.68	H001946 ²

Air Inlet Hood Style C offers more models that provide added rain/water protection. While all inlet hoods offer top rain/water there are some that offer additional protection from splash on the underside of the hood.

2 - Hood has rain shroud on underside of hood style.



Inlet Hood - Style D

Fits O.D. (A)		Hood Dia. (B)		Height (C)		Add to Stack		Mat'l	Weight		Part Number
inch	mm	inch	mm	inch	mm	inch	mm		lbs	kgs	
4.50	114	9.50	241	4.69	119	3.69	94	Metal	3.20	1.44	H000170
5.00	127	9.50	241	4.69	119	3.69	94	Metal	3.30	1.50	H000165
6.00	152	9.50	241	4.69	119	3.69	94	Metal	3.10	1.40	H000275
		9.50	241	4.69	119	3.69	94	Metal	3.20	1.44	H000276 ²
7.03	179	17.00	432	6.75	171	5.75	146	Metal	4.60	2.08	H000339
10.00	256	15.98	406	7.42	188	5.28	134	Metal	5.0	2.27	H770082