

## **3" (76mm) Inlet & Outlet Off-Road Exhaust System Products**



**From manifolds to tailpipes, only one company delivers this range of components in such a wide variety of sizes—Donaldson!**

### **Mufflers**

- Five muffler styles
- Mounts or installs in any position
- Aluminized steel construction
- All round with domed ends
- Slotted inlet/outlet connections
- Mufflers and body bands have matching black matte high temperature finish
- Estimated attenuation 12-18 dBA

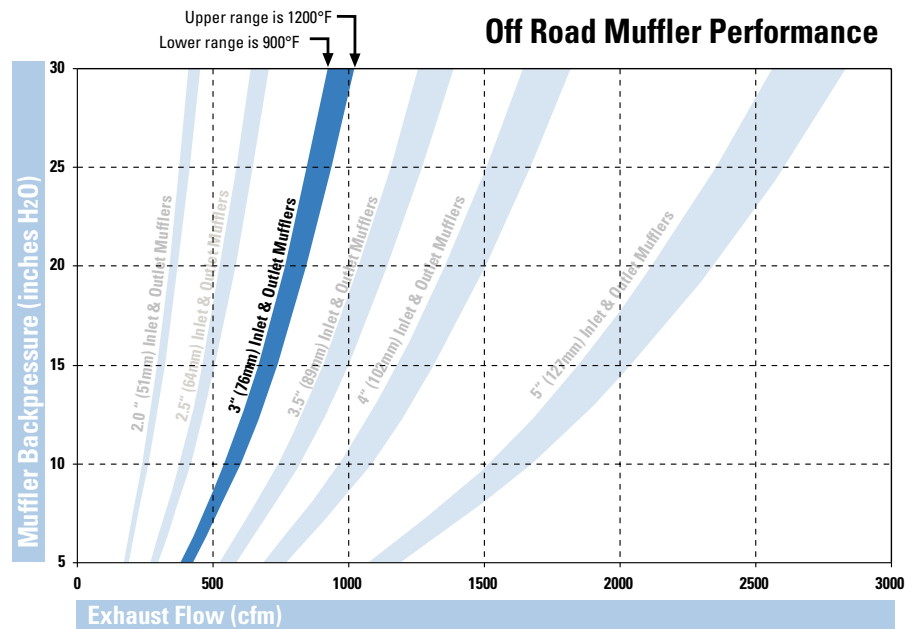
### **Compliment your System with Aluminized Steel Accessories**

- Elbows
- Variety of clamps
- Tubes and pipes
- Connectors
- Stack caps

Donaldson®

## 3.0 inches Inlet & Outlet Connection Mufflers

- Five muffler styles – all in-stock
- Mount or install in any position
- Aluminized steel construction
- All round with domed ends
- Slotted inlet/outlet connections
- Black matte high temperature finish
- Estimated attenuation 12-18 dBA



Converting from inches of water to inches of Mercury? Use this conversion: 13.6" H<sub>2</sub>O = 1" Hg

### Aluminized Steel Accessories for 3.0" (76mm) Systems

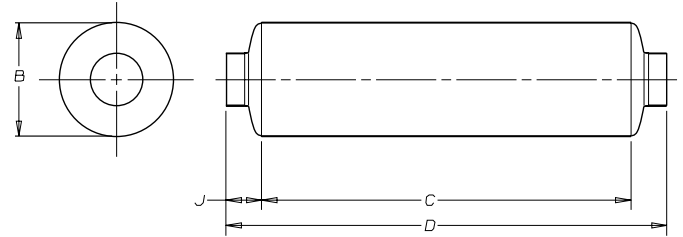
Part Description	Part Numbers
Elbow 90°	O.D.-O.D. - P207326, J190013
	O.D.-O.D. Short Radius - P206397, P207362
	O.D.-I.D. - P206340, P206341
Elbow 45°	O.D.-O.D. - P207351
	O.D.-I.D. - P206280
Connector	I.D.-I.D. - P206372
	O.D.-O.D. - P206362
Straight Pipe	P206334 (10 ft. 3m length)
Clamps	Band Clamp -J009604
Muffler Body Band	M002119 (finish matches muffler)
Stack Cap	P270536 (zinc)
Spark Arrestor	M070068

For other in-stock exhaust accessories and sizes, ask for a copy of Donaldson Exhaust Catalog, No. F110028.

## 3.0" (76mm) Inlet/Outlet Muffler Specifications

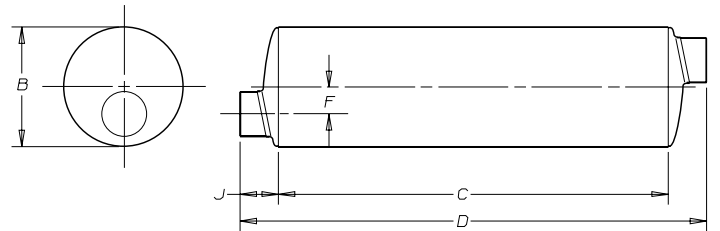
### Style 1

<b>Part No. M085407</b>	<b>inches</b>	<b>mm</b>
Inlet & Outlet Slotted I.D.:	3.00	76.2
(B) Body Diameter:	8.50	216
(C) Body Length:	20.00	508
(D) Overall Length:	26.50	673
(J) Tube Length:	3.25	73
Weight:	15.2 lbs	6.89 kg



### Style 2

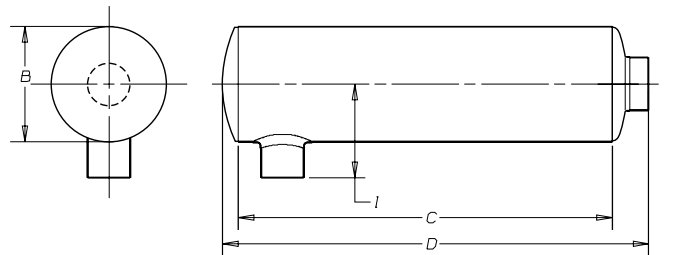
<b>Part No. M085408</b>	<b>inches</b>	<b>mm</b>
Inlet & Outlet Slotted I.D.:	3.00	76.2
(B) Body Diameter:	8.50	216
(C) Body Length:	20.00	508
(D) Overall Length:	26.50	673
(F) Offset Tube:	2.00 (2)	51 (2)
(J) Tube Length:	3.25	83
Weight:	15.2 lbs	6.89 kg



### Style 3

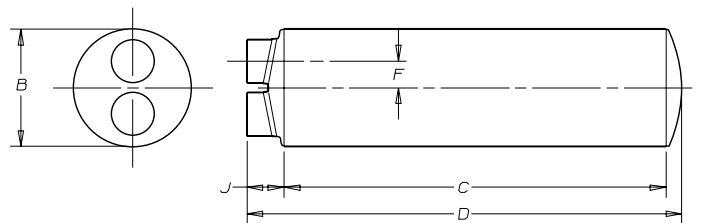
<b>Part No. M085409</b>	<b>inches</b>	<b>mm</b>
Inlet & Outlet Slotted I.D.:	3.00	76.2
(B) Body Diameter:	8.50	216
(C) Body Length:	20.00	508
(D) Overall Length:	24.19	614
(I) Tube Length:	6.50	165
Weight:	15.4 lbs	6.96 kg

Note: Flows in either direction



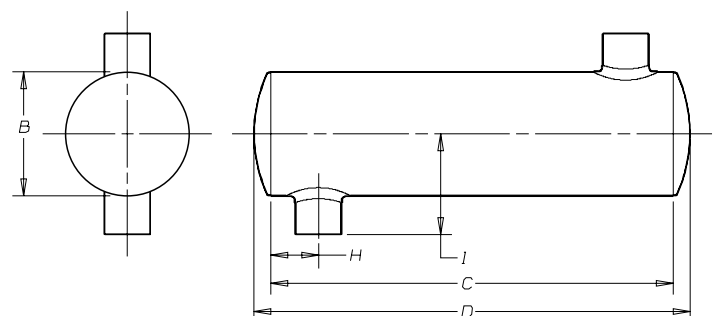
### Style 5

<b>Part No. M085410</b>	<b>inches</b>	<b>mm</b>
Inlet & Outlet Slotted I.D.:	3.00	76.2
(B) Body Diameter:	8.50	216
(C) Body Length:	20.00	508
(D) Overall Length:	24.19	614
(F) Offset Tube:	2.00 (2)	51 (2)
(J) Tube Length:	3.25	83
Weight:	17.0 lbs	7.69 kg



### Style 6

<b>Part No. M085411</b>	<b>inches</b>	<b>mm</b>
Inlet & Outlet Slotted I.D.:	3.00	76.2
(B) Body Diameter:	8.50	216
(C) Body Length:	20.00	508
(D) Overall Length:	21.88	556
(H) Tube Location:	3.00 (2)	76 (2)
(I) Tube Length:	6.50 (2)	165 (2)
Weight:	14.2 lbs	6.44 kg





Donaldson®

Donaldson Company, Inc.  
Minneapolis, MN  
55440-1299

*www.donaldson.com*

**Brochure No. F111103 (7/05)**

© 2005 Printed in the U.S.A.  
Equal Opportunity Employer  
Donaldson Company, Inc. reserves the  
right to change or discontinue any model or  
specification at any time and without notice.

**United States & Canada**  
Tel: 952-887-3131

**Belgium**  
Tel: 32-16-38-3811

**Hong Kong**  
Tel: 852-2-2402-2803

**Australia**  
Tel: 612-4350-2033