

3.5" (89mm) Inlet & Outlet Off-Road Exhaust System Products



From manifolds to tailpipes, only one company delivers this range of components in such a wide variety of sizes—Donaldson!

Mufflers

- Five muffler styles
- Mounts or installs in any position
- Aluminized steel construction
- All round with domed ends
- Slotted inlet/outlet connections
- Mufflers and body bands have matching black matte high temperature finish
- Estimated attenuation 12-18 dBA

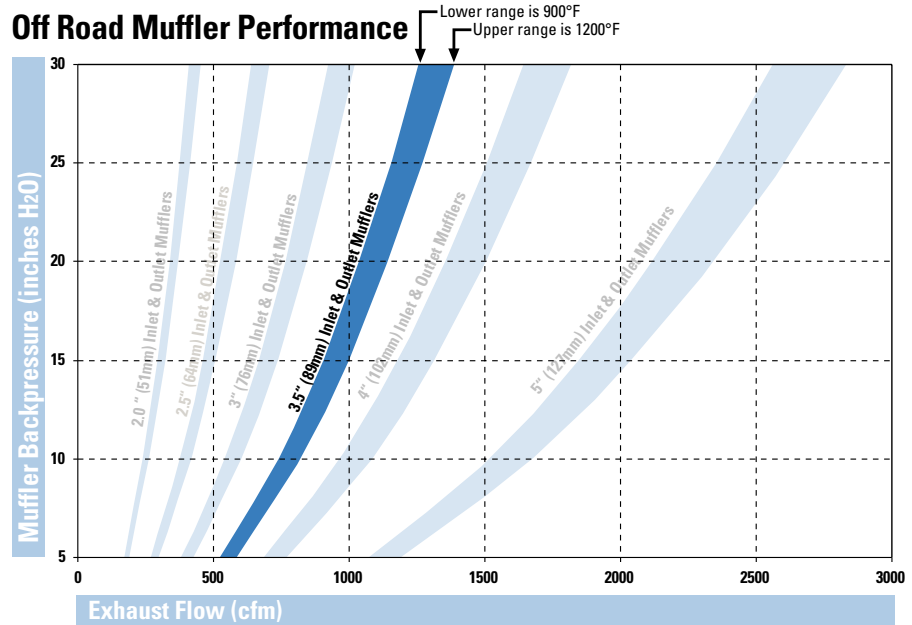
Compliment your System with Aluminized Steel Accessories

- Elbows
- Variety of clamps
- Tubes and pipes
- Connectors
- Stack caps

Donaldson®

3.5 inches Inlet & Outlet Connection Mufflers

- Five muffler styles – all in-stock
- Mount or install in any position
- Aluminized steel construction
- All round with domed ends
- Slotted inlet/outlet connections
- Black matte high temperature finish
- Estimated attenuation 12-18 dBA



Converting from inches of water to inches of Mercury? Use this conversion: 13.6" H₂O = 1" Hg

Aluminized Steel Accessories for 3.5" (89mm) Systems

Part Description	Part Numbers
Elbow 90°	O.D.-O.D. - J190014, P207327, P207328 O.D.-O.D. Short Radius - P206398, P207363 O.D.-I.D. - P206342, P224669, P206343
Elbow 60°	O.D.-I.D. - J009639
Elbow 45°	O.D.-O.D. - P207352 O.D.-I.D. - P206281
Elbow 30°	O.D.-O.D. - J009635 O.D.-I.D. - J009631
Connector	I.D.-I.D. - P206373 O.D.-O.D. - P206363
Straight Pipe	P206335 (10 ft./3m length)
Part Description	Part Numbers
Clamps	MaxGrip™ Bent Bolt - M001502 SealClamp™-Preformed - X006204
Muffler Mounting Bands	M002120 (finish matches muffler)

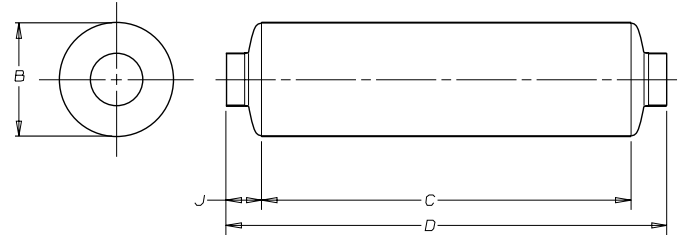
Stack Cap	P206338 (zinc)
Exhaust Ejector	H001280 (compact style)
Spark Arrestor	M070069

For other in-stock exhaust accessories and sizes, ask for a copy of Donaldson Exhaust Catalog, No. F110028.

3.5" (89mm) Inlet/Outlet Muffler Specifications

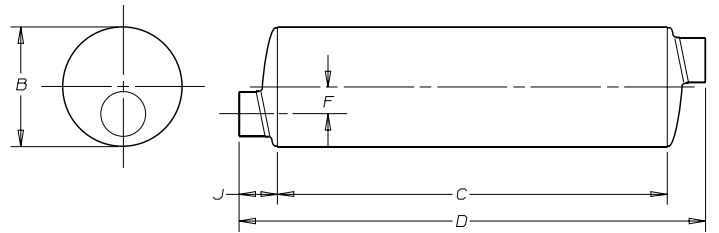
Style 1

Part No. M091046	inches	mm
Inlet & Outlet Slotted I.D.:	3.50	88.9
(B) Body Diameter:	9.00	229
(C) Body Length:	22.00	559
(D) Overall Length:	29.00	737
(J) Tube Length:	3.50	89
Weight:	15.8 lbs	7.17 kg



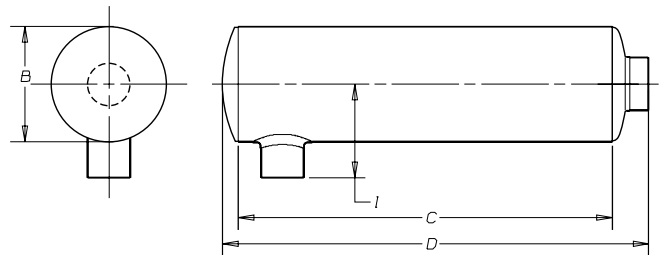
Style 2

Part No. M091047	inches	mm
Inlet & Outlet Slotted I.D.:	3.50	88.9
(B) Body Diameter:	9.00	229
(C) Body Length:	22.00	559
(D) Overall Length:	29.00	737
(F) Offset Tube:	2.10 (2)	53 (2)
(J) Tube Length:	3.50	89
Weight:	15.8 lbs	7.17 kg



Style 3

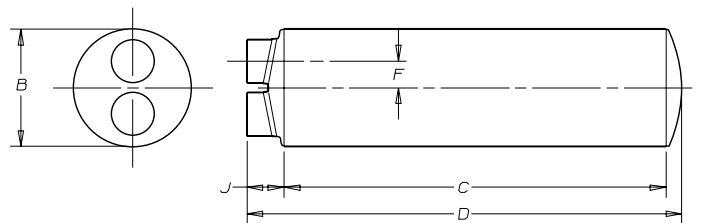
Part No. M091048	inches	mm
Inlet & Outlet Slotted I.D.:	3.50	88.9
(B) Body Diameter:	9.00	229
(C) Body Length:	22.00	559
(D) Overall Length:	26.38	670
(I) Tube Length:	7.25	184
Weight:	15.9 lbs	7.21 kg



Note: Flows in either direction

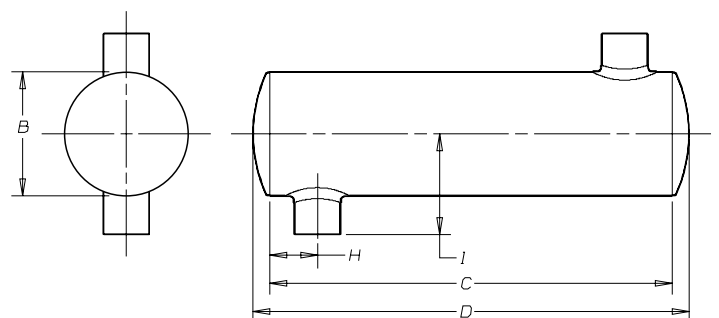
Style 5

Part No. M091049	inches	mm
Inlet & Outlet Slotted I.D.:	3.50	88.9
(B) Body Diameter:	9.00	229
(C) Body Length:	22.00	559
(D) Overall Length:	23.76	604
(F) Offset Tube:	2.10 (2)	53 (2)
(J) Tube Length:	3.50	89
Weight:	17.3 lbs	7.85 kg



Style 6

Part No. M091050	inches	mm
Inlet & Outlet Slotted I.D.:	3.50	88.9
(B) Body Diameter:	9.00	229
(C) Body Length:	22.00	559
(D) Overall Length:	23.76	604
(H) Tube Location:	3.50 (2)	89 (2)
(I) Tube Length:	7.25 (2)	184 (2)
Weight:	15.1 lbs	6.85 kg





Donaldson®

Donaldson Company, Inc.
Minneapolis, MN
55440-1299

www.donaldson.com

Brochure No. F111104 (7/05)

© 2005 Printed in the U.S.A.
Equal Opportunity Employer
Donaldson Company, Inc. reserves the
right to change or discontinue any model or
specification at any time and without notice.

United States & Canada
Tel: 952-887-3131

Belgium
Tel: 32-16-38-3811

Hong Kong
Tel: 852-2-2402-2803

Australia
Tel: 612-4350-2033