

4" (102mm) Inlet & Outlet Off-Road Exhaust System Products



From manifolds to tailpipes, only one company delivers this range of components in such a wide variety of sizes—Donaldson!

Mufflers

- Five muffler styles
- Mounts or installs in any position
- Aluminized steel construction
- All round with domed ends
- Slotted inlet/outlet connections
- Mufflers and body bands have matching black matte high temperature finish
- Estimated attenuation 12-18 dBA

Compliment your System with Aluminized Steel Accessories

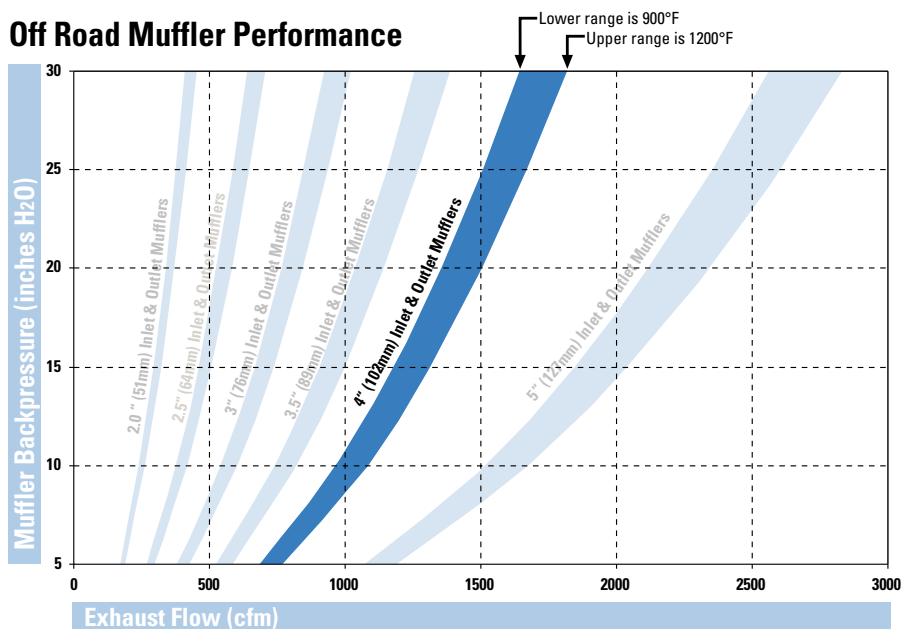
- Elbows
- Variety of clamps
- Tubes and pipes
- Connectors
- Stack caps

Donaldson®

4.0 inches Inlet & Outlet Connection Mufflers

- Five muffler styles – all in-stock
- Mount or install in any position
- Aluminized steel construction
- All round with domed ends
- Slotted inlet/outlet connections
- Black matte high temperature finish
- Estimated attenuation 12-18 dBA

Off Road Muffler Performance



Converting from inches of water to inches of Mercury? Use this conversion: 13.6" H₂O = 1" Hg

Aluminized Steel Accessories for 4.0" (102mm) Systems

Part Description	Part Numbers
Elbow 90°	O.D.-O.D. - J190014, P207327, P207328
	O.D.-O.D. Short Radius - P206399, P207364, J190009
	O.D.-I.D. - J008681, P206344, P206345, P207338
Elbow 60°	O.D.-O.D. - J009644
	O.D.-I.D. - J009640
Elbow 45°	O.D.-O.D. - P207353
	O.D.-I.D. - P206282, J190023
Elbow 30°	O.D.-O.D. - J009636
	O.D.-I.D. - J009632
Connector	I.D.-I.D. - P206374
	O.D.-O.D. - P206364
Straight Pipe	P206336 (10 ft./3m length)

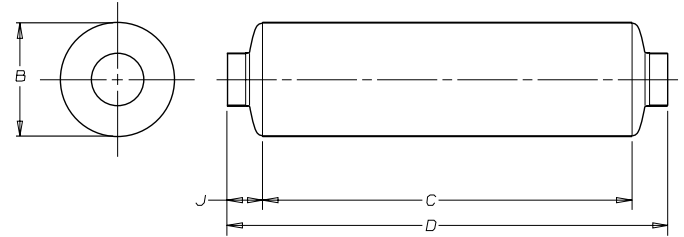
Part Description	Part Numbers
Clamps	Bent Bolt - M001503
	Offset MaxGrip™ - M002134
	SealClamp™ - X007784
Stack Cap	P206336 (zinc), P270837 (chrome)
Spark Arrestor	M080024

For other in-stock exhaust accessories and sizes, ask for a copy of Donaldson Exhaust Catalog, No. F110028.

4.0" (102mm) Inlet/Outlet Muffler Specifications

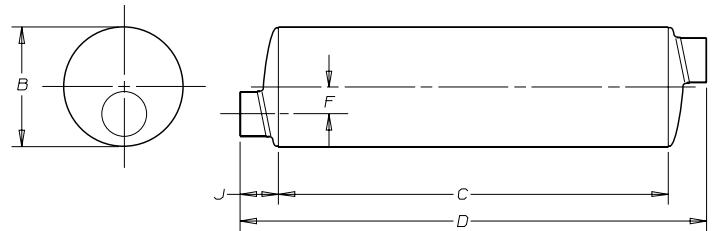
Style 1

Part No. M101167	inches	mm
Inlet & Outlet Slotted I.D.:	4.00	102
(B) Body Diameter:	10.00	254
(C) Body Length:	24.00	610
(D) Overall Length:	32.00	813
(J) Tube Length:	4.00	102
Weight:	19.3 lbs	8.75 kg



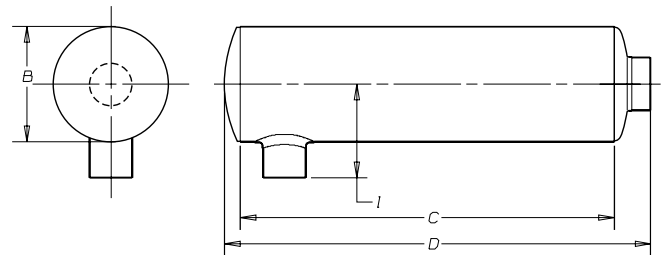
Style 2

Part No. M101168	inches	mm
Inlet & Outlet Slotted I.D.:	4.00	102
(B) Body Diameter:	10.00	254
(C) Body Length:	24.00	610
(D) Overall Length:	32.00	813
(F) Offset Tube:	2.44 (2)	62 (2)
(J) Tube Length:	4.00	102
Weight:	19.3 lbs	8.75 kg



Style 3

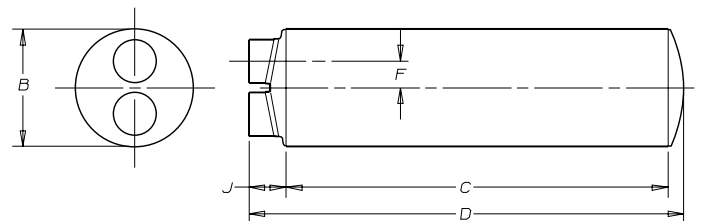
Part No. M101169	inches	mm
Inlet & Outlet Slotted I.D.:	4.00	102
(B) Body Diameter:	10.00	254
(C) Body Length:	24.00	610
(D) Overall Length:	29.18	741
(I) Tube Length:	8.00	203
Weight:	19.8 lbs	8.98 kg



Note: Flows in either direction

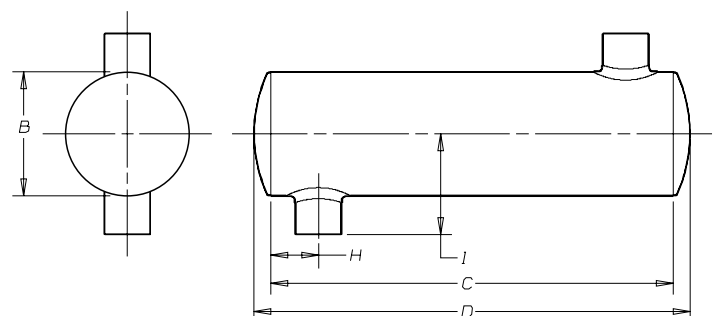
Style 5

Part No. M101170	inches	mm
Inlet & Outlet Slotted I.D.:	4.00	102
(B) Body Diameter:	10.00	254
(C) Body Length:	24.00	610
(D) Overall Length:	29.18	741
(F) Offset Tube:	2.44 (2)	62 (2)
(H) Tube Location:	4.00	102
Weight:	22 lbs	9.98 kg



Style 6

Part No. M101171	inches	mm
Inlet & Outlet Slotted I.D.:	4.00	102
(B) Body Diameter:	10.00	254
(C) Body Length:	24.00	610
(D) Overall Length:	26.36	670
(H) Tube Location:	4.00 (2)	102 (2)
(I) Tube Length:	8.00 (2)	203 (2)
Weight:	19.1 lbs	8.68 kg





Donaldson®

Donaldson Company, Inc.
Minneapolis, MN
55440-1299

www.donaldson.com

Brochure No. F111105 (7/05)

© 2005 Printed in the U.S.A.
Equal Opportunity Employer
Donaldson Company, Inc. reserves the
right to change or discontinue any model or
specification at any time and without notice.

United States & Canada
Tel: 952-887-3131

Belgium
Tel: 32-16-38-3811

Hong Kong
Tel: 852-2-2402-2803

Australia
Tel: 612-4350-2033