

5" (127mm) Inlet & Outlet Off-Road Exhaust System Products



From manifolds to tailpipes, only one company delivers this range of components in such a wide variety of sizes—Donaldson!

Mufflers

- Five muffler styles
- Mounts or installs in any position
- Aluminized steel construction
- All round with domed ends
- Slotted inlet/outlet connections
- Mufflers and body bands have matching black matte high temperature finish
- Estimated attenuation 12-18 dBA

Compliment your System with Aluminized Steel Accessories

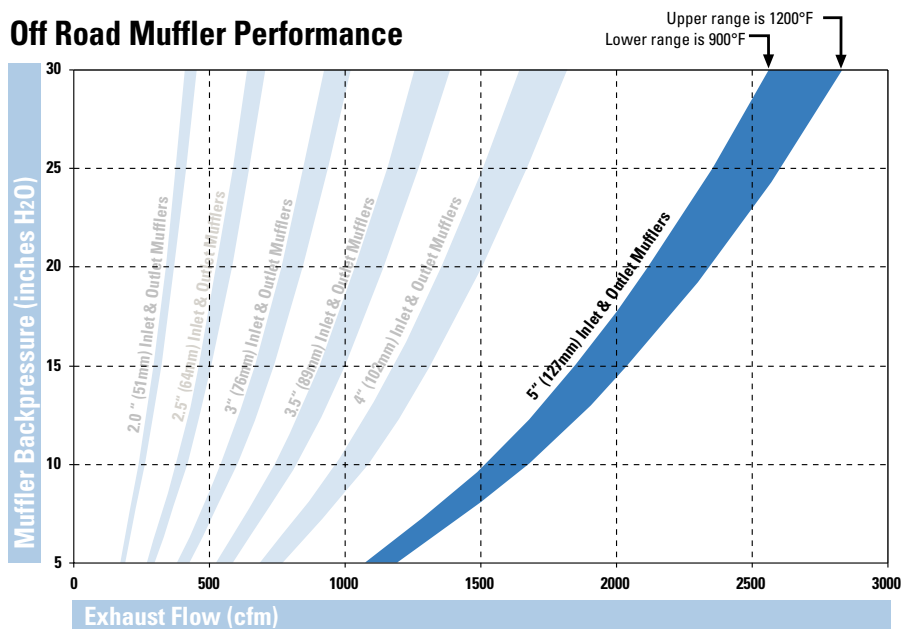
- Elbows
- Variety of clamps
- Tubes and pipes
- Connectors
- Stack caps

Donaldson®

5.0 inches Inlet & Outlet 127 mm Connection Mufflers

- Five muffler styles – all in-stock
- Mount or install in any position
- Aluminized steel construction
- All round with domed ends
- Slotted inlet/outlet connections
- Black matte high temperature finish
- Estimated attenuation 12-18 dBA

Off Road Muffler Performance



Converting from inches of water to inches of Mercury? Use this conversion: 13.6" H₂O = 1" Hg

Aluminized Steel Accessories for 5.0" (127m) Systems

Part Description	Part Numbers
Elbow 90°	O.D.-O.D. - P207332, P207331, P206349, J190020 O.D.-O.D. Short Radius - P206400, P207365 O.D.-I.D. - J190003, P207339, P206347, P206348, P207340
Elbow 67°	O.D.-O.D. - J009560
Elbow 60°	O.D.-O.D. - J009645 O.D.-I.D. - J009641
Elbow 45°	O.D.-O.D. - P207354, P224674 O.D.-I.D. - J190025, P206283, J190027
Elbow 30°	O.D.-O.D. - J009637 O.D.-I.D. - J009633
Connector	I.D.-I.D. - P206375 O.D.-O.D. - P206363
Straight Pipe	P206337 (10 ft./3m length)
Part Description	Part Numbers

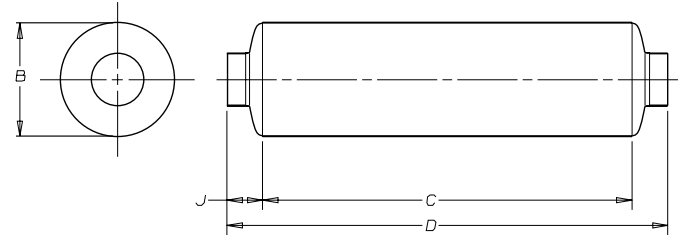
Clamps	Offset MaxGrip™ - M001865 (for tube to tube) M002135 (for tube to flex) SealClamp™ - X007785
Stack Cap	P270541 (zinc), P270838 (chrome)
Exhaust Ejector	H002129
Spark Arrestor	M090091

For other in-stock exhaust accessories and sizes, ask for a copy of Donaldson Exhaust Catalog, No. F110028.

5.0" (127mm) Inlet/Outlet Muffler Specifications

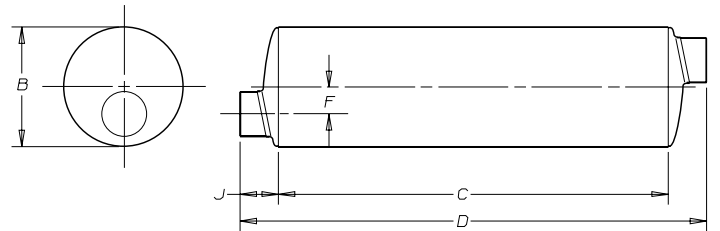
Style 1

Part No. M120747	inches	mm
Inlet & Outlet Slotted I.D.:	5.00	127
(B) Body Diameter:	12.00	305
(C) Body Length:	26.00	660
(D) Overall Length:	34.00	864
(J) Tube Length:	4.00	102
Weight:	26.7 lbs	12.11 kg



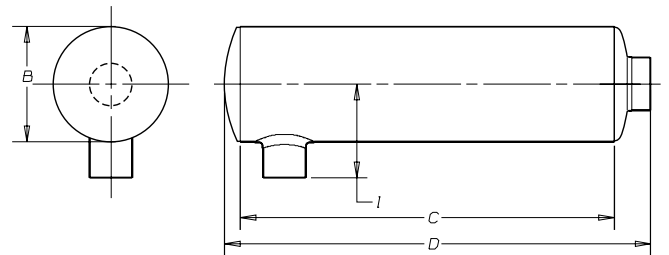
Style 2

Part No. M120748	inches	mm
Inlet & Outlet Slotted I.D.:	5.00	127
(B) Body Diameter:	12.00	305
(C) Body Length:	26.00	660
(D) Overall Length:	34.00	864
(F) Offset Tube:	2.81 (2)	71 (2)
(J) Tube Length:	4.00	102
Weight:	26.7 lbs	12.11 kg



Style 3

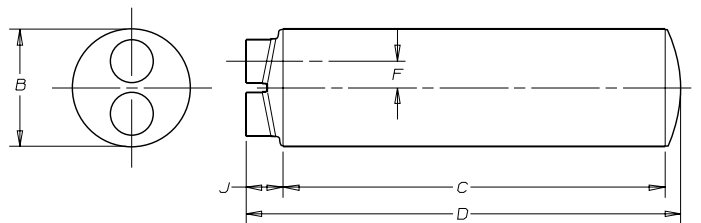
Part No. M120749	inches	mm
Inlet & Outlet Slotted I.D.:	5.00	127
(B) Body Diameter:	12.00	305
(C) Body Length:	26.00	660
(D) Overall Length:	31.63	803
(I) Tube Length:	8.75	222
Weight:	27.5 lbs	12.47 kg



Note: Flows in either direction

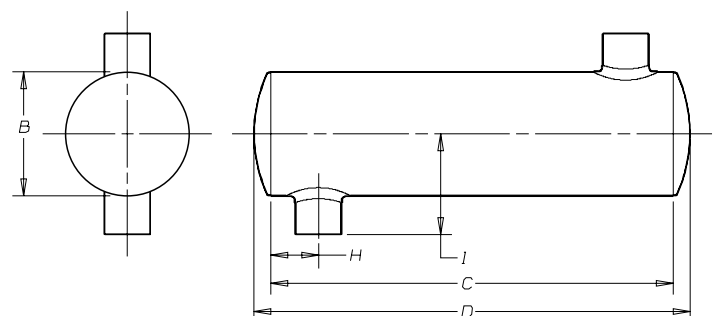
Style 5

Part No. M120750	inches	mm
Inlet & Outlet Slotted I.D.:	5.00	127
(B) Body Diameter:	12.00	305
(C) Body Length:	26.00	660
(D) Overall Length:	31.63	803
(F) Offset Tube:	2.81 (2)	71 (2)
(H) Tube Location:	4.00	102
Weight:	28.7 lbs	13.02 kg



Style 6

Part No. M120751	inches	mm
Inlet & Outlet Slotted I.D.:	5.00	127
(B) Body Diameter:	12.00	305
(C) Body Length:	26.00	660
(D) Overall Length:	29.29	744
(H) Tube Location:	5.00 (2)	127 (2)
(I) Tube Length:	8.75 (2)	222 (2)
Weight:	26.4 lbs	11.98 kg





Donaldson®

Donaldson Company, Inc.
Minneapolis, MN
55440-1299

www.donaldson.com

Brochure No. F111106 (7/05)

© 2005 Printed in the U.S.A.
Equal Opportunity Employer
Donaldson Company, Inc. reserves the
right to change or discontinue any model or
specification at any time and without notice.

United States & Canada
Tel: 952-887-3131

Belgium
Tel: 32-16-38-3811

Hong Kong
Tel: 852-2-2402-2803

Australia
Tel: 612-4350-2033