



# DFPRE 2

PACKAGED & COMPACT  
DUST & FUME COLLECTORS



**Smart Collector**  
Powered by iCue™ Technology

# PRODUCTIVITY MEETS PRACTICALITY

Today's advanced manufacturing tools operate in faster-paced environments, which is great for helping you meet your production goals, but can add a lot of dust to your work environment.

The Downflo® Evolution Pre-assembled Small (DFPRE 2) was designed as a packaged system to answer customer demand for a compact, convenient, and reliable filtration system that can help maximize production uptime. The result is an easy-to-install dust collector with unrivaled filtration performance – delivering operational confidence.

Help protect your people and productivity – while keeping your operation moving at top speed – with effective and reliable dust management solutions that can deliver:



Environmental  
Health & Safety



Maximized  
production uptime



Economical cost  
of ownership

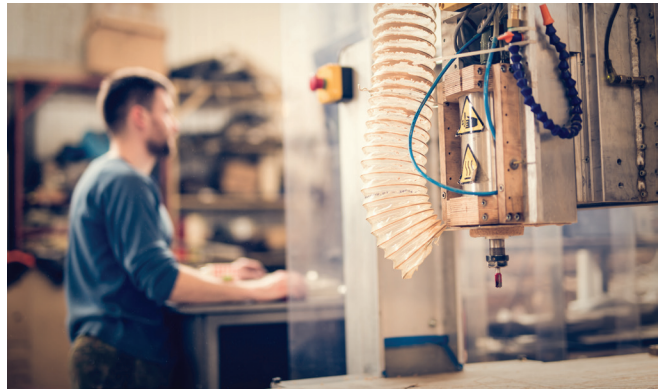


Packaged and easy  
installation

## APPLICATIONS

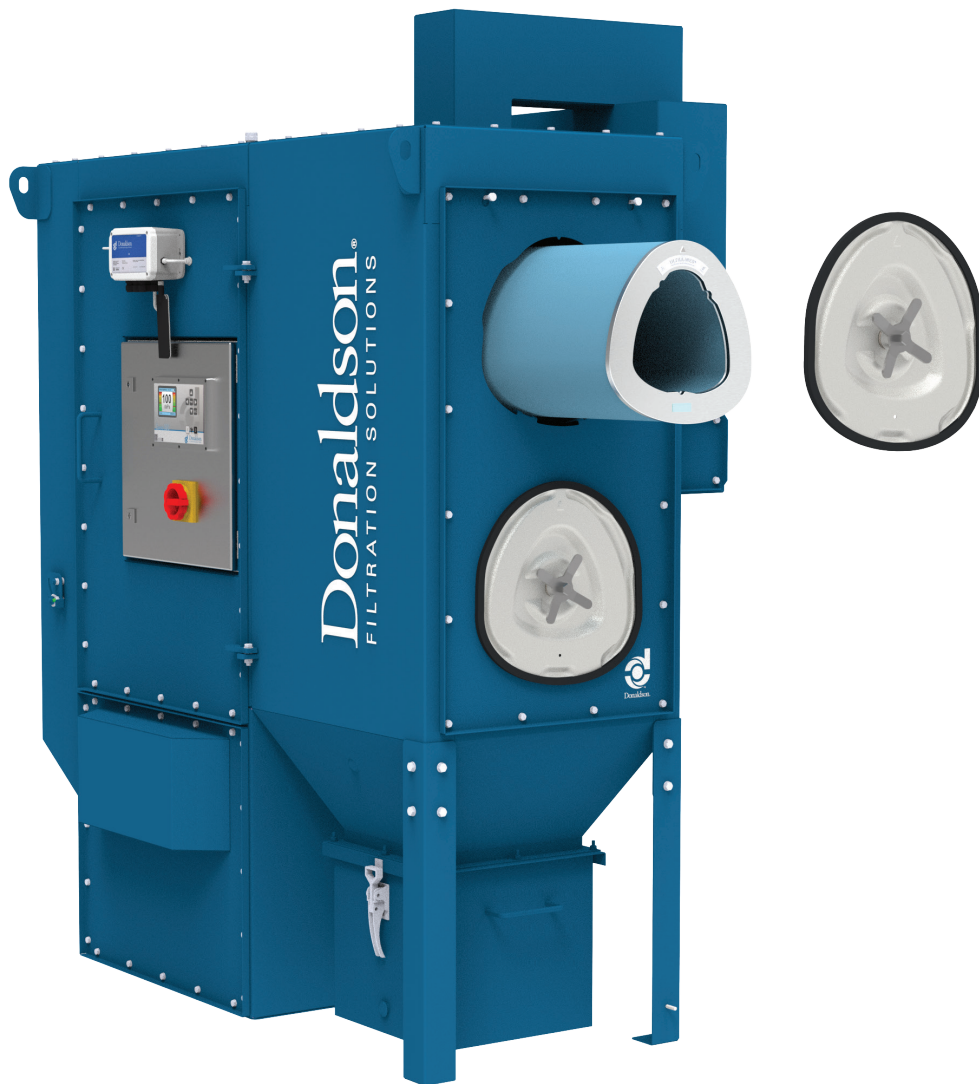
Donaldson offers effective dust control solutions for your continuous manufacturing processes:

- Metal & Machine Manufacturing
- Chemical & Petroleum Products
- Pharmaceutical
- Metal Grinding
- Plasma Cutting
- Laser Cutting
- Welding
- Abrasive Blast
- Plastic



# INNOVATIONS IN DUST CONTROL

For more than 40 years, Donaldson has been at the forefront of cartridge filter collection and has developed game-changing dust control solutions that improve performance, convenience, and total cost of ownership. These advancements have resulted in next-generation dust control systems, including the DFPRE series of collectors.



## Smart Collector

Equipped with iCue™ Connected Filtration Technology, your Smart Collector monitors your equipment and provides operational insights through automated alerts and a dashboard that's accessible from your computer or smart device.

## Sparktrap

When used as part of an overall fire mitigation strategy, it reduces the risk of a spark entering the dust collector by directing the airstream through a tortuous path.\*

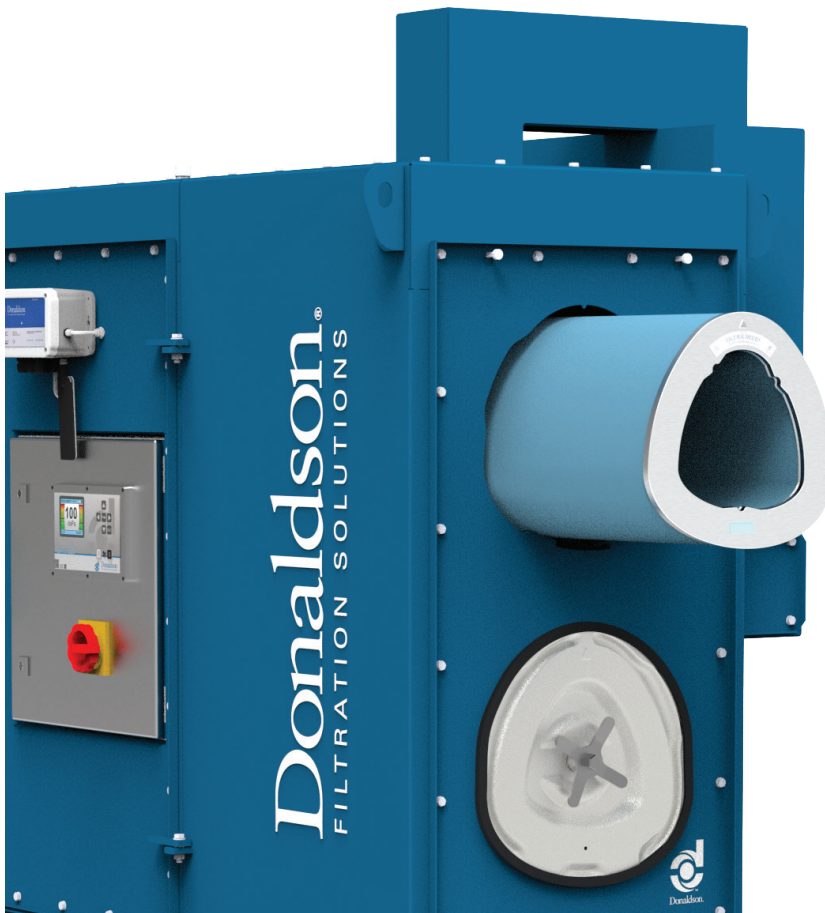
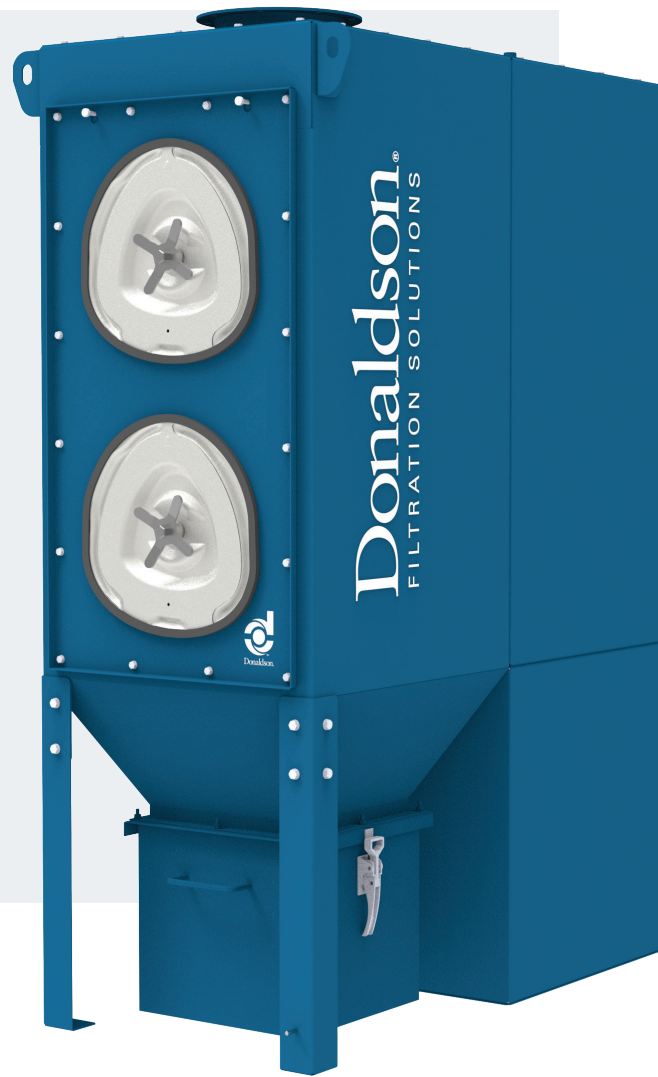
*\* Intended for use in applications with an increased fire risk and can be used as part of an overall fire mitigation strategy. No single spark mitigation device, including the Spark Reducing Inlet, can guarantee the elimination of all sparks and ignition sources from entering the dust collector. Please contact your Donaldson sales representative to discuss additional fire mitigation strategies as necessary.*

# THE DFPRE 2 IS PACKAGED TO PERFORM

With its small footprint, high-efficiency cartridge filters, and easy-to-connect ducting, the DFPRE 2 is an effective solution for organizations looking for maximum performance and production uptime from an industry leader.

## EASY INSTALLATION

- Ships pre-assembled for streamlined set-up
- Pre-wired fan and controls
- Includes protective junction box
- Compact design provides simple handling



## ADAPTABILITY

Suitable for a wide range of applications with options including:

- HEPA afterfilter to achieve higher filtration efficiency: 99.97% on 0.3 micron particles

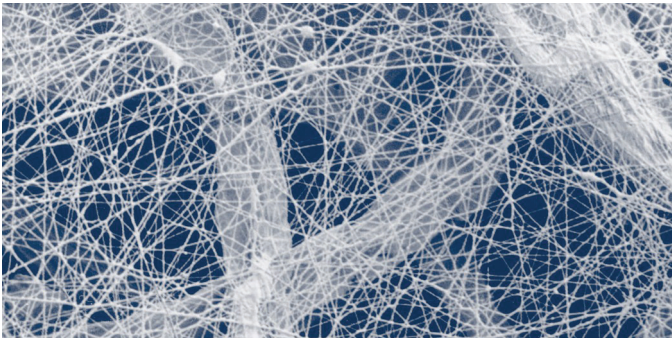
## MAXIMIZED PERFORMANCE

- Enhanced airflow design directs incoming air to the inlet dropout plate for reduced filter loading
- Enhanced media surface area and pulse cleaning adds to filter life
- Increased airflow per cartridge results in a lower cost per m<sup>3</sup>/hr

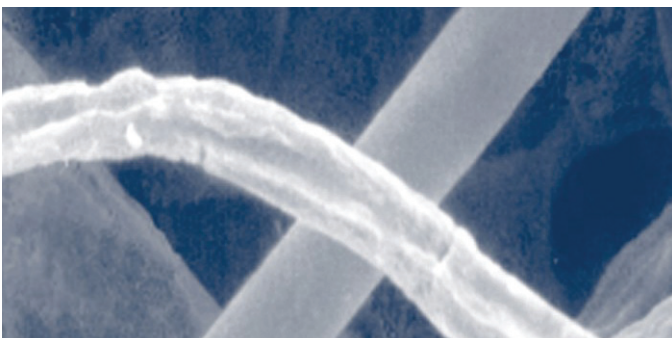
# INDUSTRY-LEADING FILTRATION DESIGN

Our unique trigonal cartridge filters – made with industry-leading Ultra-Web® fine fiber filtration technology – have more filter media at the bottom of the cartridge element so pulse-cleaning energy directs the ejected dust toward its ultimate destination – the containment vessel.

Ultra-Web filtration technology features a layer of fine fibers (0.2 - 0.3 microns in diameter) on the surface of the media to capture sub-micron contaminants. This makes the dust cake come off easily during automated cleaning cycles, ensuring cleaner air longer.



**Fine Fiber Media (600px)** – Fine fiber surface loading technology is available in all Ultra-Web and Fibra-Web® filter cartridges.



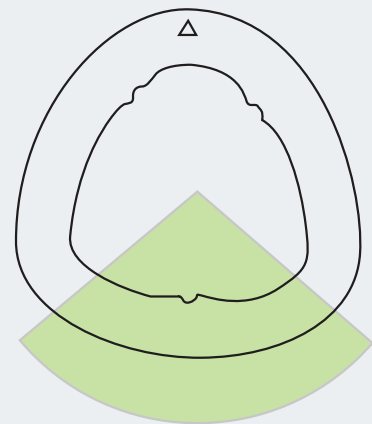
**Commodity Filter Media (600px)** – Conventional media has spaces of up to 60 µm between fibers, allowing dust to become deeply embedded.

With its more efficient cartridge filters and advanced downward airflow, the DFPRE 2 requires fewer filters for the same filtration power, resulting in:

- Reduced filter replacement costs
- Reduced maintenance
- Reduced floor space requirements

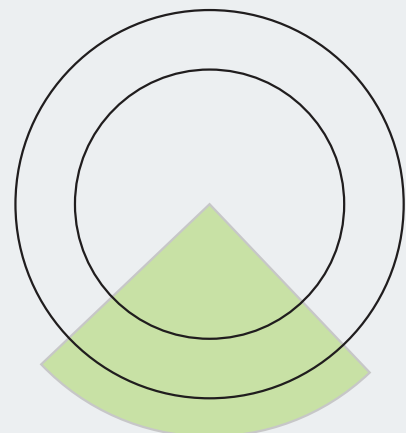
**Trigonal filters are specifically designed for improved pulse cleaning, increased airflow per cartridge, and superior performance.**

## Triagonal Filter



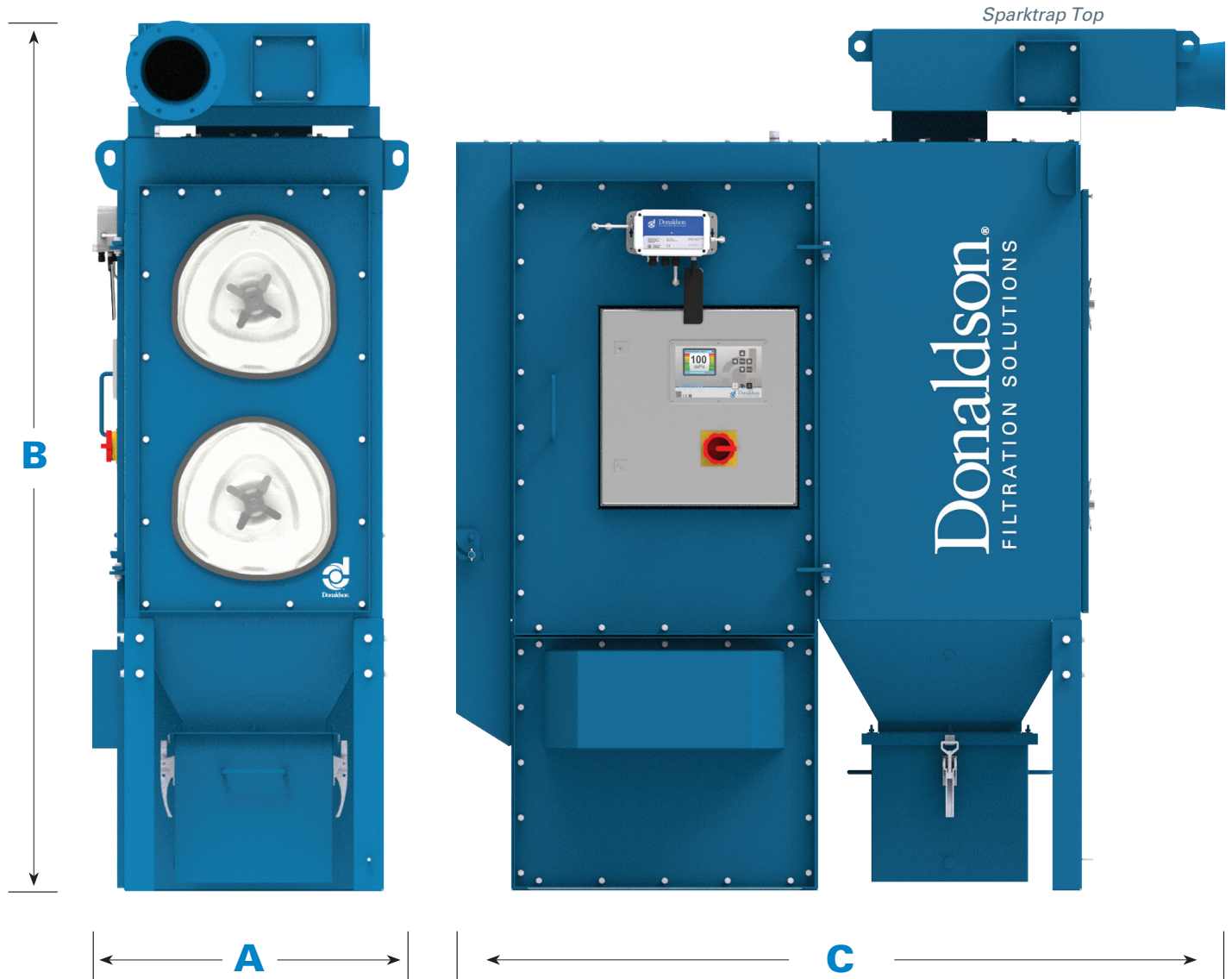
27% of Total Filter Media

## Round Filter



25% of Total Filter Media

# RIGHT-SIZE YOUR DUST CONTROL SYSTEM

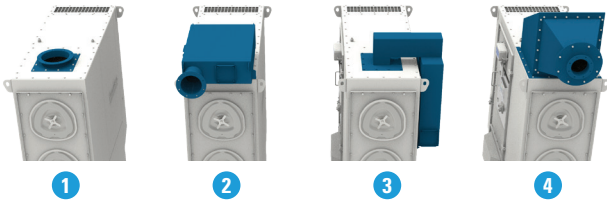


Model	Number of filter elements	Number of valves	Dimensions (mm)*			Weight (kg)**
			Width A	Height B	Depth C	
DFPRE 2 Standard	2	2	829	1963	1705	424
DFPRE 2 Sparktrap Top	2	2	829	2188	2112	460
DFPRE 2 Sparktrap Side	2	2	963	2160	1705	473
DFPRE 2 Abrasion Resistant Inlet	2	2	829	2510	2112	463

\* Dimensions & Weights depend on the options chosen.

\*\* Weights include filter cartridges and are for collectors prior to first use, i.e., with no dust collected. Excludes shipped loose items.

# FEATURES & OPTIONS

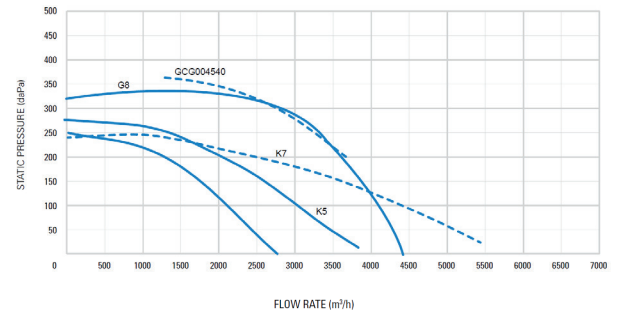
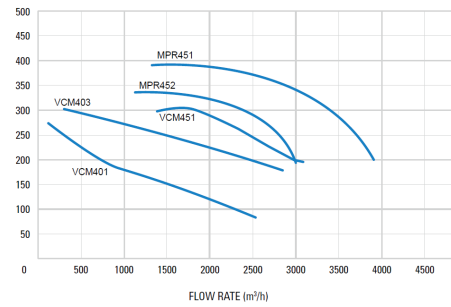


Inlet Pack Options	#
Standard	1
Sparktrap Top	2
Sparktrap Side	3
Abrasion Resistant	4



Access Door Options	#
Element Access Covers	5
Access Door	6

Fan Type	Power (kW)	Frequency	Phase
VCM 401S	1.5	50	3
VCM 403S	2.2	50	3
VCM 451S	3.0	50	3
VCM 452	3.0	50	3
VCM 451	4.0	50	3
GCH004540	4.0	50	3
K3	1.5	50	3
K5	2.2	50	3
K7	3.0	50	3
G8	5.5	50	3



## Fan Options

These curves indicate static pressure available at fan inlet for a given application, when fitted into a collector.

To select the most suitable fan for a given application:

1. Determine the air volume, in m<sup>3</sup>/h, needed to entrain the dust.
2. Estimate pressure drop through connected system – i.e. between point of entrainment and collector inlet.
3. Assess pressure drop over dust collector, prior to replacing filter cartridges, usually 100 daPa.
4. The sum of 2 and 3 = static pressure at inlet.
5. Consult graph for fan performance available.

## Unit Options

Execution for outside installation

Compressed air - oil/water separator & accessories

Full range of fan sets

CAP insulation foam

Full range of filter cartridges

Bin balance pipe kit

iCue

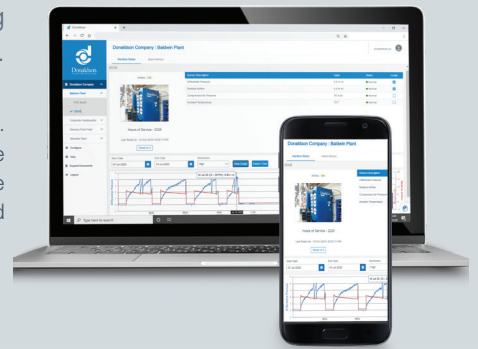
HEPA

DFS Feeder for the absorption of oily substances

# SMART COLLECTOR. SMART CHOICE.

Choosing a Donaldson Smart Collector means choosing an industry-leading dust, fume, and mist collection solution for your operation and employees.

Smart Collectors come equipped with Donaldson's iCue™ Connected Filtration Technology. The system tracks your equipment, providing real-time data and analytics to help maximize uptime, increase maintenance efficiency, and manage your operation's critical compliance data. Our industry professionals, extensive product portfolio, and outstanding service and support can help ensure your Smart Collector will always be a Smart Choice.



UNPARALLELED  
PERFORMANCE



INNOVATIVE  
FILTER  
MEDIA TECHNOLOGY



INTELLIGENT  
ENGINEERING



**Smart Collector**  
Powered by iCue™ Technology

**DISCOVER SUPERIOR DUST & FUME FILTRATION SOLUTIONS WITH DONALDSON. VISIT [DONALDSON.COM](https://www.donaldson.com) TO LEARN MORE TODAY!**



Discover our range on [www.donaldson.com](https://www.donaldson.com)  
Shop for filters the easier way at [shop.donaldson.com](https://shop.donaldson.com)  
Contact us at [iaf-europe@donaldson.com](mailto:iaf-europe@donaldson.com)

Donaldson Europe BV — Interleuvenlaan 1, B-3001 Leuven · Belgium — Phone +32(0)16 38 38 11

F119558 EUK (04/2024) - DFPRE 2 Series ©2024 Donaldson Company, Inc. Donaldson, Torit, DCE, ultra-web, iCue, Downflo and the color blue are marks of Donaldson Company, Inc. All other marks belong to their respective owners. All product features, specifications, and options are subject to change without notice. Renderings in the DFPRE 2 brochure are for illustration purposes only and do not form a contractual agreement. They are subject to change without prior notice. The accuracy of the final product or service may vary.