



DONALDSON DELIVERS

Duramax[®] G3

Hydraulic Filter Series

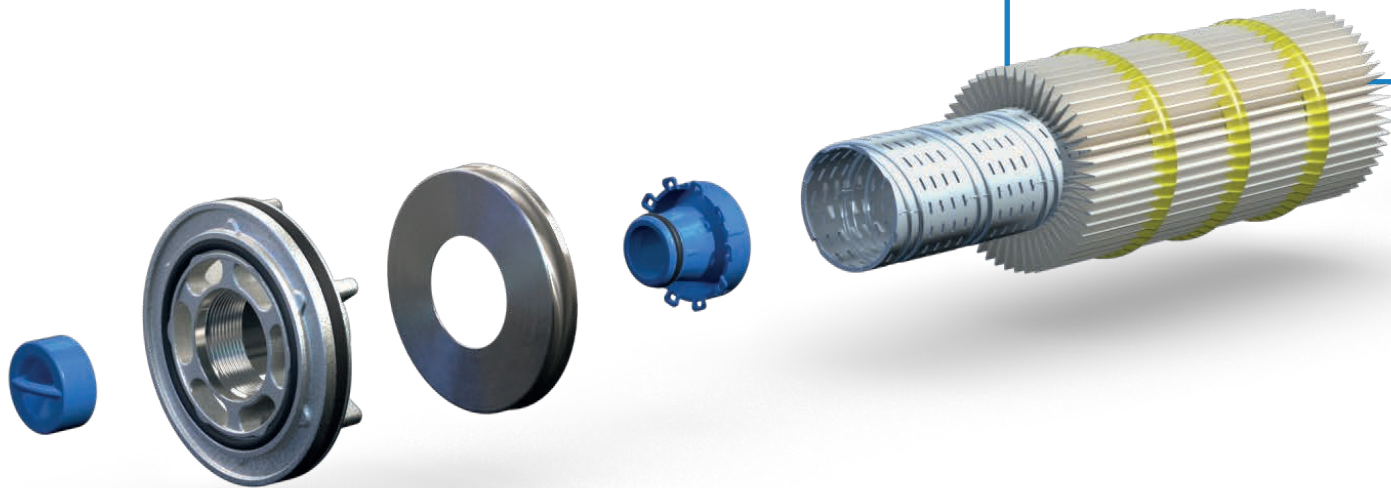


Duramax[®]

Donaldson delivers a new protection standard for original equipment

Duramax® G3 is the first IP protected hydraulic spin-on filter developed with meticulous attention to cleanliness at every stage, from cradle to grave.

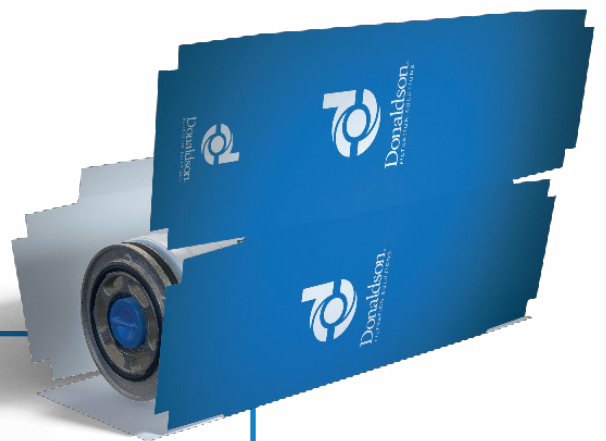
Make Clean



Top quality filter components produced and assembled clean.



Ship Clean



Safely packed
& shipped clean.





Service Clean



Patented seal design for clean service capturing any particles released by metal threading.



Protective cap to seal the clean side during production until it is removed before installation.



Duramax®

Duramax[®] G3

Superior filtration doesn't just mean removing contaminants. It also means filtering out any possibility of contamination behind the scenes, before the filter is shipped and throughout its lifetime.

Donaldson uses its own baffle washing machine and liner washing machine technologies to improve cleanliness during the manufacturing process. The filters are shipped with a protection cap to protect the clean side of the filter so that they are immaculate when you receive them. A patented clean seal design has been applied to meet the most stringent requirements and provide maximum cleanliness during installation and replacement.

The result is a new generation that extends the successful Duramax range and combines proven technologies with unique features to secure your spare parts retention. In addition, the Duramax G3 filter enhances machine performance and offers an unprecedented level of protection for hydraulic equipment.

Proven Duramax performance, evolved to the next level

- ▶ Competitive cost level
- ▶ Limited investment and impact on current installation
- ▶ Clean manufacturing, shipping and servicing
- ▶ Unique clean seal concept reduces the possibility of initial contamination
- ▶ Featured design elements prevent replacement with non-genuine parts

Where is Duramax G3 used?

Duramax G3 is a medium pressure in-line filter. Typical applications include:

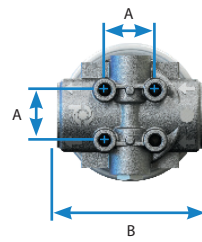
- ▶ Powershift transmissions
- ▶ Pumps
- ▶ Hydrostatic charge filtration
- ▶ Pilot circuits
- ▶ Mid-pressure kidney loops
- ▶ Return line with cold start spikes

Learn More on [donaldson.com](https://www.donaldson.com)

Duramax[®] G3

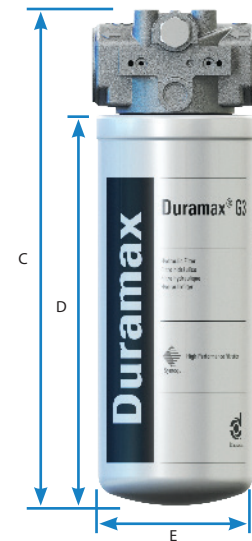
specifications

Operating pressure	Up to 500 psi / 3448 kPa / 34.5 bar
Static pressure	Up to 1000 psi / 6895 kPa / 69 bar
Flow range	0 - 37 gallon/min / 0 -140 liter/min
Pressure fatigue strength	100000 cycles (0 - 34.5 bar)
Beta rating	Media performance up to Beta 7 μ m(c) = 1000 25 psi / 172.5 kPa / 1.7 bar
Bypass valve setting	50 psi / 345 kPa / 3.4 bar
Porting sizes	G3/4 and G1
Element collapse resistance	Up to 290 psid / 2000 kPa / 20 bar Short version: 4.9 lbs / 2.2 kg
Assembly weight	Long version: 7.5 lbs / 3.4 kg
Operating temperatures	-4°F to 250°F / -29°C to 121°C



HGK04 (4" diameter)

	Short version	Long version
A	1.4" / 35 mm	1.4" / 35 mm
B	4.0" / 98 mm	4.0" / 98 mm



HGK04 (4" diameter)

	Short version	Long version
C	8.5" / 216 mm	12.0" / 305 mm
D	6.0" / 152 mm	9.4" / 239 mm
E	3.7" / 94 mm	3.7" / 94 mm

Get in touch

Duramax G3 is the third generation of Donaldson's proven Duramax technology. Its technologies have been evolved to integrate cleanliness at every stage of its life, offering exceptional protection for your products and your business.



Donaldson Company, Inc.

donaldson.com
donaldsonoemfiltration.com

Global Headquarters

North America Minneapolis, Minnesota, United States

Regional Headquarters

Africa Johannesburg, South Africa
Australasia Wuyong, Australia
China Shanghai, China
Europe Leuven, Belgium
India Gurgaon, India

Japan Gunma, Japan

Latin America Aguascalientes, Mexico

South Korea Seoul, Korea

Southeast Asia Singapore, Singapore

Brochure No. F111680 ENG (11/2021)

© 2021 Donaldson Company, Inc. All rights reserved. Donaldson Company, Inc. reserves the right to change or discontinue any model or specification at any time and without notice. Printed in the U.S.A.