

Document Number: AFS-102-SB-01

Date: July 16, 2009

Service Bulletin

**Mandatory Inspection of
AFS IBF System P/N 102300-101
Installed on
MD Helicopters
Model 369 Series Helicopters**



4 Research Park Drive, Suite 200
St. Charles, MO 63304-5685

COPYRIGHT© 2009

Aerospace Filtration Systems, Inc. (AFS)
UNPUBLISHED — ALL RIGHTS RESERVED

LIMITED and/or RESTRICTED RIGHTS NOTICE

This document, along with its drawings and photographs, contains Trade Secrets and/or Commercial or Financial Information that is proprietary to Aerospace Filtration Systems, Inc. (AFS) under 5 USC 552 as amended, and is Prohibited from Public Disclosure by 18 USC 1905. Do not duplicate or disclose outside the U.S. Government without the express written permission of Aerospace Filtration Systems, Inc.

The Government's rights to use, modify, reproduce, release, perform, display, or disclose these technical data are restricted to the purpose of evaluating AFS's design for FAA commercial certification and airworthiness consideration only. Any reproduction of technical data or portions thereof marked with this legend, or referring to this legend, must also reproduce the markings and legend. Any person, other than the Government, who has been provided access to such data must promptly notify: Aerospace Filtration Systems, Inc., Attn: Business Manager, 4 Research Park Drive, St. Charles, MO 63304-5685

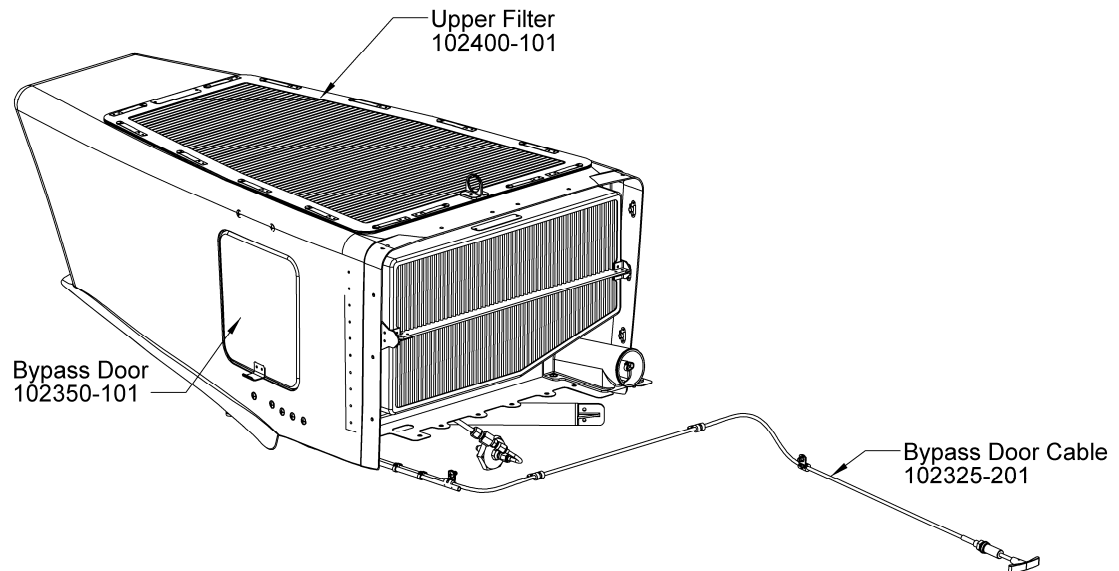
The data subject to this limited/restricted rights notice is contained on all pages.

1. Purpose

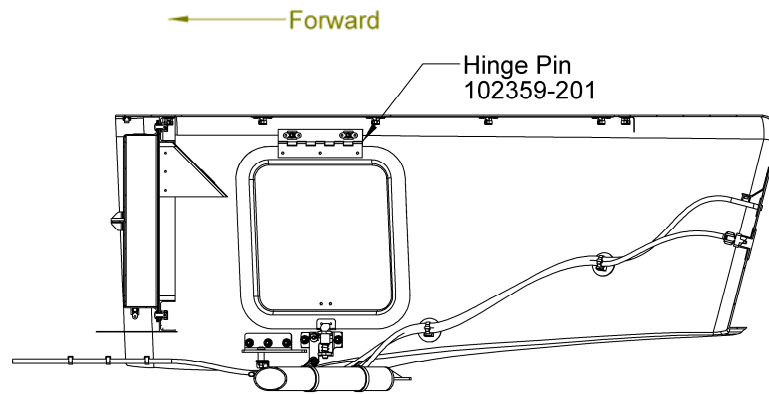
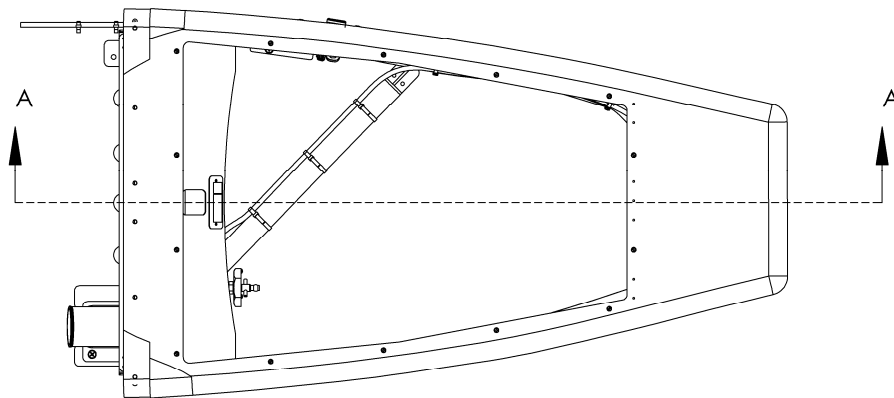
The purpose of this Service Bulletin (SB) is to inspect and insure the integrity of Hinge Pin 102359-201 securing Bypass Door 102350-101 to Fairing 102301-201

2. Scope

This SB will outline the procedures for inspecting the integrity of the Hinge Pin. This inspection must be completed within twenty-five hours of receiving this Service Bulletin.

3. Instructions

- a. Remove Upper Filter 102400-101.
- b. Open the Bypass Door by pulling on the Bypass Door Cable 102325-201 in the cockpit.
- c. Insert a .075" (approximately) diameter steel probe into the forward end of the hinge.

SECTION A-A
SCALE 1 : 8

- d. Using approximately five pounds of pressure, try to push the Hinge Pin 102359-201 out while opening and closing the Bypass door with free hand.
- e. If the Hinge Pin is free enough to exit from the aft end of the hinge, contact Aerospace Filtration Systems. If the Hinge Pin is not free enough to exit from the aft end of the hinge, proceed with step f.
- f. Repeat step c and d at the aft end of the hinge.
- g. If the Hinge Pin is free enough to exit from the aft end of the hinge, contact Aerospace Filtration Systems. . If the Hinge Pin is not free enough to exit from the aft end of the hinge then the integrity of the Hinge Pin is good and inspection is complete.
- h. Secure Bypass Door.
- i. Re-install Upper Filter 102400-101.