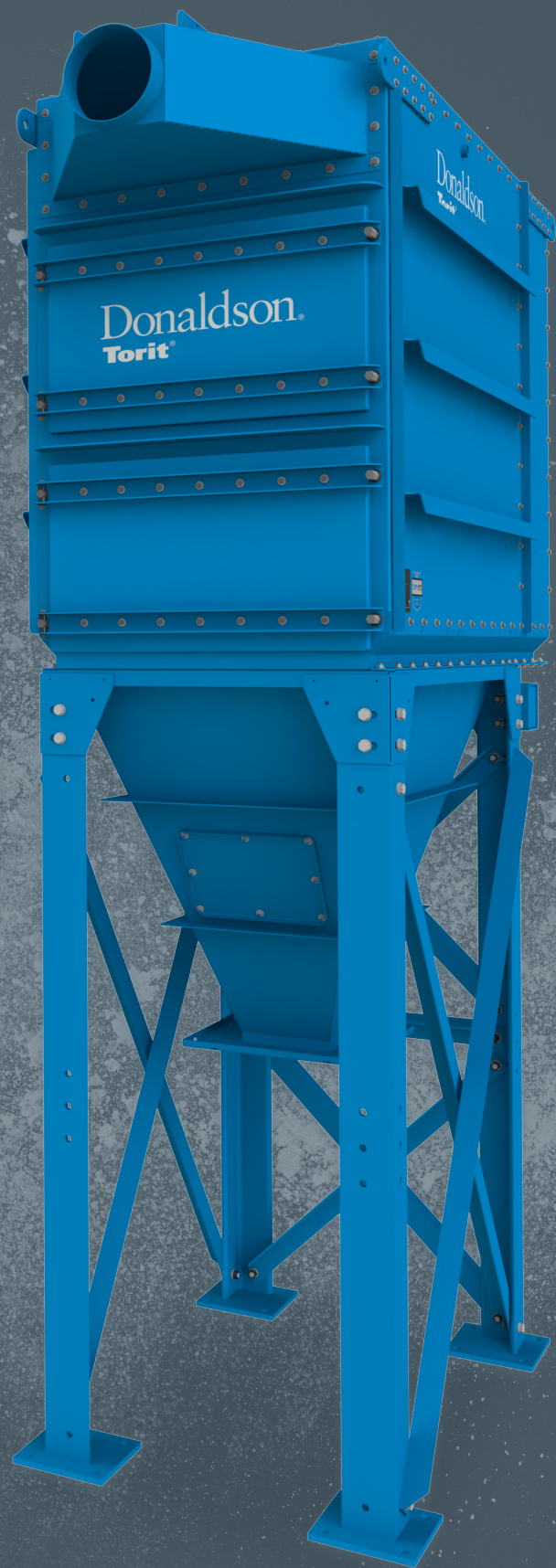


**DALAMATIC® G2
DUST COLLECTORS**

**CONTROL
CHALLENGING
DUST**



Donaldson
FILTRATION SOLUTIONS



Smart Collector
Powered by iCue™ Technology

YOU NEED HELP IN STICKY SITUATIONS

Working with materials that create sticky or agglomerative dust can be a challenge. Moisture can condense the dust and cause it to plug equipment. When that happens, filtration stops, and heavy dust can quickly back up, filling your plant with dust.

To help prevent the downtime and hours of clean-up caused by a clogged filtration system, you need dust control solutions specifically designed to handle challenging dust, with features such as:

- Easy and flexible installation
- Envelope-shaped filter bags for superior pulse cleaning
- Optimized spacing between filters for better dust drop out
- Easy access to filters for quicker changeouts
- Integrated inlet designed for optimal air distribution over filters
- Downward airflow for enhanced dust dropout and reduced re-entrainment
- 24/7 continuous-duty design
- Smart technology for electronic filtration monitoring

Certain materials are prone to creating challenging dust.

These can include:

- Food
- Minerals
- Gypsum
- Cement
- Sand
- Paper
- Grain
- Cattle Feed
- Rice
- Wheat
- Pharma
- Wood



DALAMATIC® G2 DESIGNED FOR CHALLENGING DUST

The Donaldson Torit® Dalamatic® G2 delivers state-of-the-art technology to help you control challenging and sticky dust. This continuous-duty collector is simple to install, easy to maintain, and provides a lower total cost of ownership — all from a dust control leader you trust.



Smart Collector

Equipped with iCue™ Connected Filtration Technology, your Smart Collector monitors your equipment and provides operational insights through automated alerts and a dashboard that's accessible from your computer or smart devices.

Easy Installation

Ships with bags installed.

Flexible Design

Allows installations in work areas with low headroom or a small footprint and allows a Torit® Backward Inclined fan to be mounted on top or side as a custom option.

Simplified Maintenance

With easy-open hinged doors and access from the production (or dirty-air) side, there is no need to remove jet tubes/blowpipes for service or pull caked filters through a tight tube sheet hole. The cage stays in the collector during filter changeouts, making replacement easier and lighter. And, compared to earlier models, filter changeout times are reduced by up to 75% with 20% fewer filters to replace.

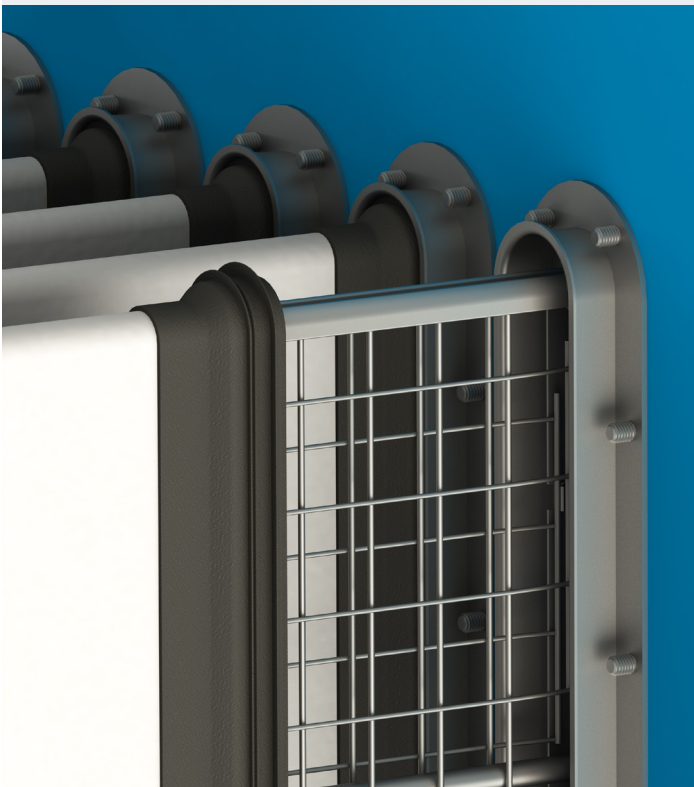
Lower Total Cost of Ownership

The Dalamatic G2 keeps total cost of ownership low through reduced maintenance costs and fewer filters to buy over the life of the collector. The G2's reduced compressed air consumption makes it one of the most energy-efficient collectors in the industry.

RADIAL SEAL TECHNOLOGY REDUCES CHANGEOUT TIME

The Dalamatric G2 features a revolutionary Radial Seal filter design with fixed cages, which reduces the number of steps required in a filter change from 10 to 5.

That reduces the time for filter changeouts by up to 75% compared to earlier designs.



- Radial Seal gasket comes preassembled with the filter bag
- Insert guide tools are supplied with the collector and are reused over the life of the collector
- Dirty-side access doors provide direct access to filter bags for filter changeouts and maintenance
- The insert (cage) remains bolted in place during service
- The insert guide tool is inserted into the filter bag with the Radial Seal
- The insert guide tool and filter bag assembly are then pushed over the end and down the length of the insert until the Radial Seal is engaged with the crown (receiver)

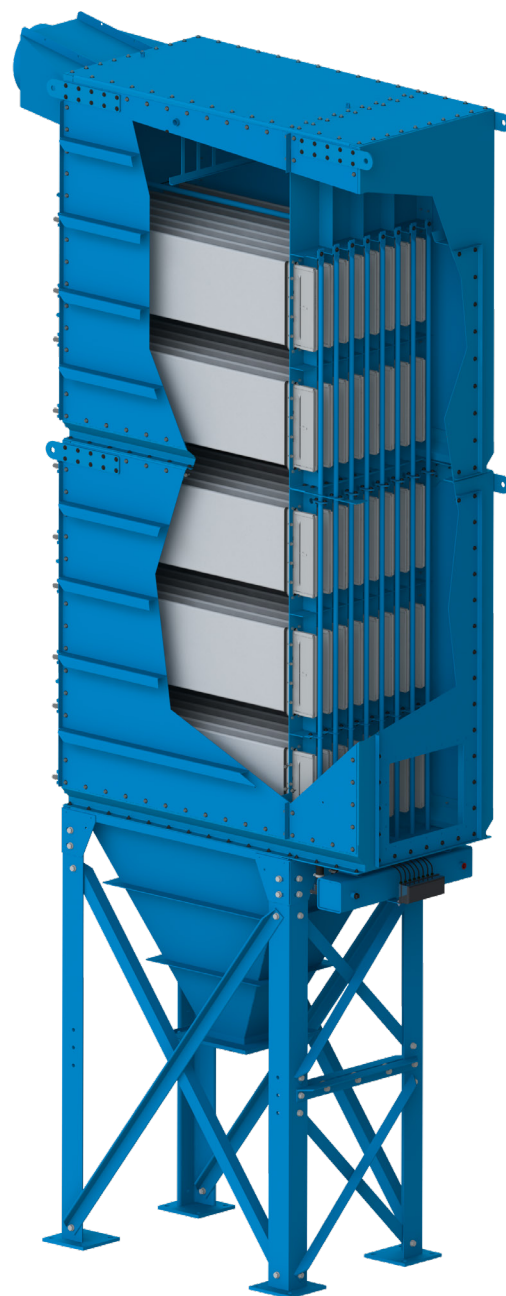
UNIQUE FILTER BAG IMPROVES EFFICIENCY

As experts in innovative dust control solutions, Donaldson went the extra mile in its design of filter bags for the Dalamatic G2, using patented Dura-Life™ bag filters in an envelope shape. The unique shape provides greater movement of the bag to dislodge challenging dust cakes during the powerful pulse-jet cleaning action of the Dalamatic G2.

Dura-Life bag filters are engineered with a hydro-entanglement process that uses water to blend the bag fibers, creating a more uniform material with a smaller pore size that provides better surface loading of dust and prevents penetration deep into the media. In contrast, conventional polyester bags are manufactured with a needling process that creates larger pores where dust can embed into the fabric, inhibiting cleaning and reducing bag life.

With better surface loading, Dura-Life bag filters provide improved pulse cleaning and a lower pressure drop, which results in extended bag life, less maintenance time and cost, energy savings, and greater filtration efficiency.

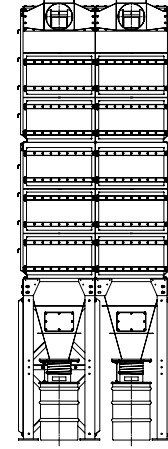
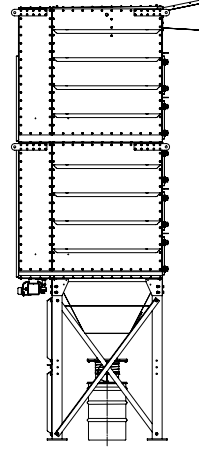
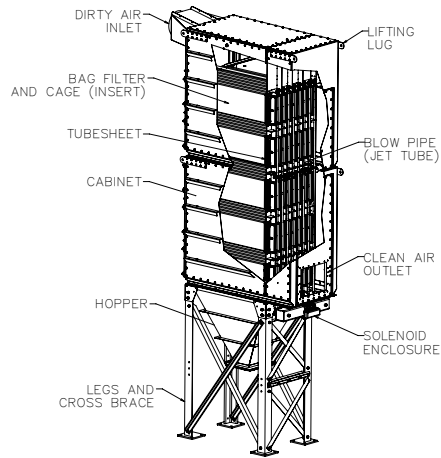
Dura-Life Filter Bags provide twice the life of standard 16 oz. polyester bags.



How Dalamatic G2 Filter Bags Work

- Dust accumulates on the outer surface of the filter bag as air penetrates the media
- The blowpipe (jet tube) injects a burst of compressed air into the bag filter
- Airflow is then briefly reversed, inflating the bag filter and dislodging dust
- The dislodged dust cake falls into the collection hopper for final removal
- The envelope-shaped bag filter, which is mounted on a unique wire frame, ensures optimum airflow and thorough cleaning

DIMENSIONS & SPECIFICATIONS



DLMC Model	Dimensions					
			Pyramid Hopper			
	Total Width		Total Height		Height to Center of Inlet	
	in	mm	in	mm	in	mm
1/2/16	50.25	1276.35	169.12	4295.65	161.25	4095.75
1/3/24	50.25	1276.35	196.12	4981.45	189.25	4806.95
1/4/32	50.25	1276.35	224.50	5702.30	218.63	5553.20
2/2/32	93.50	2374.90	169.12	4295.65	161.25	4095.75
1/5/40	50.25	1276.35	262.75	6673.85	256.51	6515.35
2/3/48	93.50	2374.90	196.12	4981.45	189.25	4806.95
2/4/64	93.50	2374.90	224.50	5702.30	218.63	5553.20
2/5/80	93.50	2374.90	262.75	6673.85	256.51	6515.35
3/4/96	136.75	3473.45	224.50	5702.30	218.63	5553.20

DLMC Model	Filter Quantity	Cloth Bag Area		No. of Banks	No. of Tiers	No. of Valves	Shipping Weight with Pyramid Hopper	
		ft²	m²				lb	kg
1/2/16	16	277	26	1	2	8	3,300	1,497
1/3/24	24	415	39	1	3	8	4,150	1,882
1/4/32	32	554	51	1	4	8	5,150	2,336
2/2/32	32	554	51	2	2	16	5,600	2,540
1/5/40	40	692	64	1	5	8	6,100	2,767
2/3/48	48	830	77	2	3	16	6,900	3,130
2/4/64	64	1107	103	2	4	16	8,400	3,810
2/5/80	80	1384	129	2	5	16	10,650	4,831
3/4/96	96	1661	154	3	4	24	12,000	5,443

STANDARD FEATURES & AVAILABLE OPTIONS

Collector Design	Std	Opt
Mild Steel Construction	X	
Horizontal Bag Removal	X	
High Temperature Construction		X
Mountable Fan		X
Bags & Cages		
Dura-Life Twice the Life Polyester Felt Bags	X	
Variety of Bag Media Options		X
Anti-Static Bag Filters		X
Paint System		
Textured Multi-Coat Paint Finish with 2,000-Hour Salt Spray Performance	X	
Premium Duty Finish		X
Custom Colors		X
Hopper Design		
Pyramid Hoppers	X	
Single-Outlet Hopper		X
Support Structure†		
Standard Leg Pack	X	
Leg Extensions		X

Electrical Controls, Gauges & Enclosures	Std	Opt
Solid-State Control Panels and Valves in NEMA 4 Encl.	X	
Solid-State Control Panels and Valves in NEMA 9 Encl.		X
Control Panels and Valves with Heater in NEMA 9 Encl.		X
Magnehelic®** Gauge	X	
Solenoid Enclosure NEMA 9		X
Photohelic®** Gauge		X
Delta P Control, Delta P Plus Control		X
Compressed Air Filter and Regulator		X
Donaldson's iCue™ Connected Filtration Technology	X	
Safety Features		
Sprinkler Pack		X
Explosion Vents		X
Warranty		
10-Year Warranty	X	

† Donaldson Torit equipment is designed to IBC guidelines for specific wind speed exposure and seismic spectral acceleration at grade level. Contact your Donaldson Torit representative for detailed information available on the equipment's Spec Control drawings. Equipment may be customized to meet unique, customer-specified site requirements.

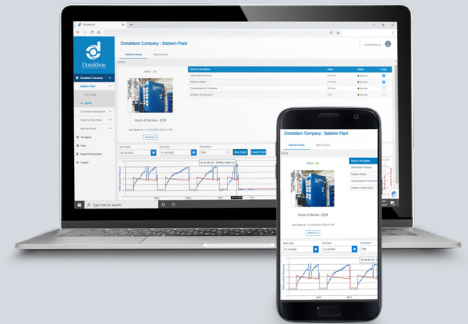
* Magnehelic and Photohelic are registered trademarks of Dwyer Instruments, Inc.

DLMC Operating Conditions	Standard	Optional
Seismic Spectral Acceleration	$S_z=1.5$ & $S_1=0.6$	--
Wind Load Rating (mph/kph)	90/144.8	--
Housing Rating (inches of H ₂ O/millimeters of H ₂ O)	0-20/0-508	21-45/533-1143
Compressed Air Required (psi/bar)	55-90/3.8-6.2	--

SMART COLLECTOR. SMART CHOICE.

Choosing a Donaldson Smart Collector means choosing an industry-leading dust, fume, and mist collection solution for your operation and employees.

Smart Collectors come equipped with Donaldson's iCue™ Connected Filtration Technology. The system tracks your equipment, providing real-time data and analytics to help maximize uptime, increase maintenance efficiency, and manage your operation's critical compliance data. Our industry professionals, extensive product portfolio, and outstanding service and support can help ensure your Smart Collector will always be a Smart Choice.



**UNPARALLELED
PERFORMANCE**



**INNOVATIVE FILTER
MEDIA TECHNOLOGY**



**INTELLIGENT
ENGINEERING**



Smart Collector
Powered by iCue™ Technology



Donaldson.

Donaldson Company, Inc.
Minneapolis, MN
donaldson.com • shop.donaldson.com

North America
Email: donaldsontorrit@donaldson.com
Phone: (USA) +1-800-365-1331

Latinoamerica
Email: industrialair@donaldson.com
Phone: +52-449-300-2442
Toll Free: (CO) (57) 601-580-1611
(CL) +800-914-544 • (PE) +800-712-10
(BR) +55 (11) 99707-6689

China
Email: info.cn@donaldson.com
Phone: +86-400-921-7956

Donaldson Europe B.V.
Email: IAF-europe@donaldson.com
Phone: +32-16-38-3811

India
Email: info.difs@donaldson.com
Phone: +91-124-4807-400 • +18001035018

Australasia
Email: marketing.australia@donaldson.com
Phone: +61-02-4350-2066
Toll Free: (AU) +1800-345-837 • (NZ) +0800-743-387

Korea
Email: contactus.kr@donaldson.com
Phone: +82-2-517-3333

South Africa
Email: SAMarketing@donaldson.com
Phone: +27-11-997-6000

Southeast Asia
Email: IAF.SEA@donaldson.com
Phone: +65-6311-7373

Japan
Email: jp-ndl.ifsweb@donaldson.com
Phone: +81-42-540-4114



IMPORTANT NOTICE: Many factors beyond the control of Donaldson can affect the use and performance of Donaldson products in a particular application, including the conditions under which the product is used. Since these factors are uniquely within the user's knowledge and control, it is essential the user evaluate the products to determine whether the product is fit for the particular purpose and suitable for the user's application. All products, product specifications, availability and data are subject to change without notice, and may vary by region or country.

F119545 ENG (1/25) ©5 Donaldson Company, Inc. All rights reserved. Donaldson Company, Inc. reserves the right to change or discontinue any model or specification at any time and without notice.