

Donaldson
Torit®

FS PULSE JET BAGHOUSE DUST COLLECTORS AND BIN VENTS

ULTRA-WEB®
High Efficiency Fine Fiber Filters Built to Last

DURA-LIFE™
Twice The Life Filter Bags



121FS8 Pulse Jet Baghouse Dust Collector
with integrated fan, silencer and dumpster discharge



25FS8 Bin Vent
with integrated fan

Economical solutions for dust collection and bin venting applications.

- Side bag filter removal allows for installation in low headroom applications
- All-welded construction provides increased durability and air/water integrity
- Integral fan option up to 75 hp helps to reduce space requirements
- Unique cleaning system minimizes moisture and particulate issues in pulse valves
- Collectors with up to 225 bag filters require only one dirty air inlet, one clean air outlet, and one hopper, resulting in reduced ducting and hopper outlet costs

TWO BREAKTHROUGH FILTER OPTIONS FOR YOUR FS BAGHOUSE

DURA-LIFE FILTER BAGS PROVIDE TWICE THE LIFE OVER STANDARD 16 OZ POLYESTER BAGS

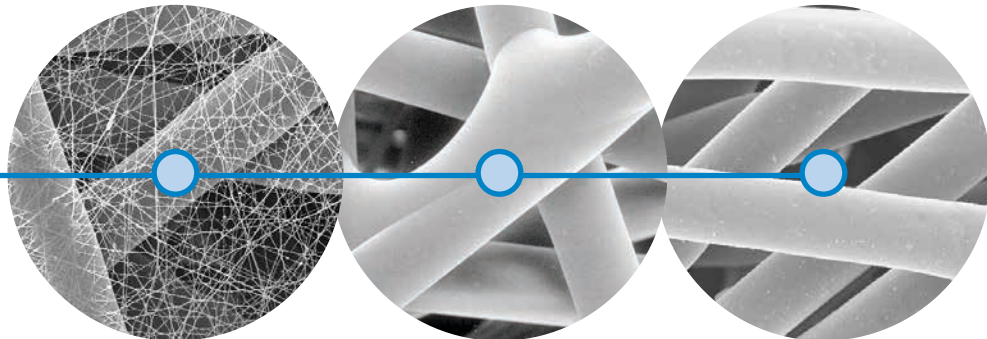
Traditional 16 oz polyester bags are produced via a needling process that creates larger pores where dust can embed into the fabric, inhibiting cleaning and reducing bag life. Dura-Life bags are engineered with a unique hydroentanglement process that uses water jets to blend the fibers. This process creates a felt with smaller pores which keeps more dust on the surface of the filter resulting in better pulse cleaning and longer bag life.

PLEATED BAGS WITH ULTRA-WEB SB PROVIDE LONGER LIFE AND REDUCED EMISSIONS

For more than two decades, Donaldson Torit has advanced the proven Ultra-Web fine fiber technology. Ultra-Web provides a very fine, continuous fiber of 0.2-0.3 micron in diameter to form a web-like net that traps dust on the surface of the media. Combining Ultra-Web technology with a sturdy spunbond polyester substrate, Ultra-Web SB pleated bag filters provide longer life, reduced downtime and reduced emissions.

10 micron

1 micron = 1/25,400 of an inch
(1/1,000 of a millimeter)

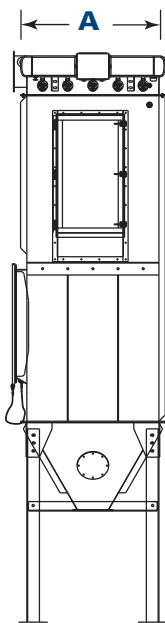


Ultra-Web SB Fine fiber Technology
(600x)

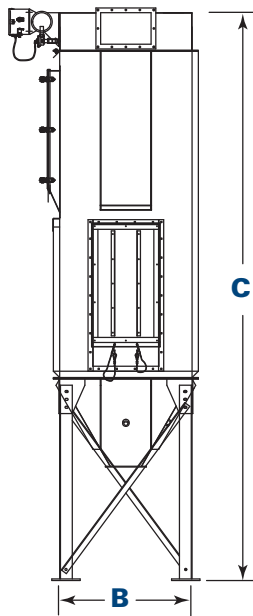
Spunbond Media
(600x)

Standard 16 oz. Polyester Media
(600x)

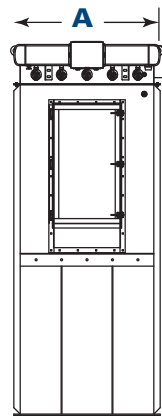
Dimensions & Specifications



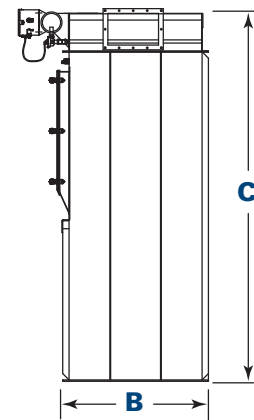
Front View
25FS8



SideView
25FS8



Front View
25FS8 Bin Vent



SideView
25FS8 Bin Vent

DIMENSIONS & SPECIFICATIONS

Model	Nominal Airflow Range*		Cloth Area		Length of Filter Bags		Shipping Weight		Dimensions					
									A		B		C	
	cfm	m ³ /h	ft ²	m ²	ft	m	lb	kg	in	mm	in	mm	in	mm
9FS4	240 - 600	408 - 1,019	60	5.6	4	1.2	1,200	544.3	30	762.0	30	762.0	119.6	3037.8
9FS6	360 - 900	612 - 1,529	90	8.4	6	1.8	1,300	589.7	30	762.0	30	762.0	143.6	3647.4
9FS8	480 - 1,200	815 - 2,038	120	11.1	8	2.4	1,400	635.0	30	762.0	30	762.0	167.6	4257.0
16FS4	428 - 1,070	727 - 1,818	107	9.9	4	1.2	1,500	680.4	38	965.2	38	965.2	126.9	3223.3
16FS6	640 - 1,600	1,087 - 2,718	160	14.9	6	1.8	1,600	725.7	38	965.2	38	965.2	150.9	3832.9
16FS8	852 - 2,130	1,447 - 3,618	213	19.8	8	2.4	1,800	816.5	38	965.2	38	965.2	174.9	4442.5
25FS4	688 - 1,670	1,169 - 2,837	167	15.5	4	1.2	1,800	816.5	46	1168.4	46	1168.4	133.6	3393.4
25FS6	1,000 - 2,500	1,699 - 4,247	250	23.2	6	1.8	2,000	907.2	46	1168.4	46	1168.4	157.6	4003.0
25FS8	1,322 - 3,330	2,246 - 5,657	333	30.9	8	2.4	2,200	997.9	46	1168.4	46	1168.4	181.6	4612.6
36FS4	960 - 2,400	1,631 - 4,077	240	22.3	4	1.2	2,100	952.5	54	1371.6	54	1371.6	140.7	3573.8
36FS6	1,440 - 3,600	2,446 - 6,115	360	33.4	6	1.8	2,300	1043.3	54	1371.6	54	1371.6	164.7	4183.4
36FS8	1,920 - 4,800	3,261 - 8,154	480	44.6	8	2.4	2,600	1179.3	54	1371.6	54	1371.6	188.7	4793.0
49FS4	1,308 - 3,270	2,222 - 5,555	327	30.4	4	1.2	2,500	1134.0	62	1574.8	62	1574.8	148.2	3764.3
49FS6	1,960 - 4,900	3,329 - 8,323	490	45.5	6	1.8	2,800	1270.1	62	1574.8	62	1574.8	172.2	4373.9
49FS8	2,612 - 6,530	4,437 - 11,092	653	60.7	8	2.4	3,100	1406.1	62	1574.8	62	1574.8	196.2	4983.5
64FS6	2,560 - 6,400	4,349 - 10,871	640	59.5	6	1.8	3,200	1451.5	70	1778.0	70	1778.0	179.1	4549.1
64FS8	3,412 - 8,530	5,796 - 14,489	853	79.2	8	2.4	3,600	1632.9	70	1778.0	70	1778.0	203.1	5158.7
64FS10	4,264 - 10,660	7,243 - 18,108	1066	99.0	10	3.0	4,000	1814.4	70	1778.0	70	1778.0	227.1	5768.3
81FS8	4,320 - 10,800	7,338 - 18,345	1080	100.3	8	2.4	5,500	2494.8	82	2082.8	82	2082.8	221.8	5633.7
81FS10	5,400 - 13,500	9,173 - 22,932	1350	125.4	10	3.0	6,000	2721.6	82	2082.8	82	2082.8	245.8	6243.3
100FS8	5,332 - 13,330	9,057 - 22,643	1333	123.8	8	2.4	6,250	2835.0	90	2286.0	90	2286.0	228.8	5811.5
100FS10	6,668 - 16,670	11,327 - 28,316	1667	154.9	10	3.0	6,750	3061.7	90	2286.0	90	2286.0	252.8	6421.1
121FS8	6,452 - 16,130	10,960 - 27,399	1613	149.8	8	2.4	7,250	3288.5	98	2489.2	98	2489.2	236.9	6017.3
121FS10	8,068 - 20,170	13,705 - 34,262	2017	187.4	10	3.0	8,000	3628.7	98	2489.2	98	2489.2	260.9	6626.9
144FS8	7,680 - 19,200	13,046 - 32,614	1920	178.4	8	2.4	8,250	3742.1	106	2692.4	106	2692.4	243.8	6192.5
144FS10	9,600 - 24,000	16,307 - 40,768	2400	223.0	10	3.0	8,750	3968.9	106	2692.4	106	2692.4	267.8	6802.1
169FS8	9,012 - 22,530	15,308 - 38,271	2253	209.3	8	2.4	9,000	4082.3	114	2895.6	114	2895.6	250.8	6370.3
169FS10	11,268 - 28,170	19,140 - 47,851	2817	261.7	10	3.0	10,000	4535.9	114	2895.6	114	2895.6	274.8	6979.9
196FS8	10,452 - 26,130	17,754 - 44,386	2612	242.7	8	2.4	10,000	4535.9	122	3098.8	122	3098.8	257.7	6545.6
196FS10	13,068 - 32,670	22,198 - 55,495	3267	303.5	10	3.0	10,750	4876.1	122	3098.8	122	3098.8	281.7	7155.2
225FS8	12,000 - 30,000	20,384 - 50,960	3000	278.7	8	2.4	11,000	4989.5	130	3302.0	130	3302.0	264.6	6720.8
225FS10	15,000 - 37,500	25,480 - 63,699	3750	348.4	10	3.0	12,000	5443.1	130	3302.0	130	3302.0	288.6	7330.4
Bin Vent Model														
9FS4	180 - 420	306 - 713	60	5.6	4	1.2	500	226.8	30	762.0	30	762.0	69.6	1767.8
9FS6	270 - 630	459 - 1,070	90	8.4	6	1.8	600	272.2	30	762.0	30	762.0	93.6	2377.4
9FS8	360 - 840	612 - 1,427	120	11.1	8	2.4	800	362.9	30	762.0	30	762.0	117.6	2987.0
16FS4	321 - 749	545 - 1,272	107	9.9	4	1.2	700	317.5	38	965.2	38	965.2	69.6	1767.8
16FS6	480 - 1,120	815 - 1,902	160	14.9	6	1.8	900	408.2	38	965.2	38	965.2	93.6	2377.4
16FS8	639 - 1,491	1,085 - 2,533	213	19.8	8	2.4	1,100	499.0	38	965.2	38	965.2	117.6	2987.0
25FS4	501 - 1,169	851 - 1,986	167	15.5	4	1.2	1,000	453.6	46	1168.4	46	1168.4	69.6	1767.8
25FS6	750 - 1,750	1,274 - 2,973	250	23.2	6	1.8	1,200	544.3	46	1168.4	46	1168.4	93.6	2377.4
25FS8	999 - 2,331	1,697 - 3,960	333	30.9	8	2.4	1,400	635.0	46	1168.4	46	1168.4	117.6	2987.0
36FS4	720 - 1,680	1,223 - 2,854	240	22.3	4	1.2	1,200	544.3	54	1371.6	54	1371.6	69.6	1767.8
36FS6	1,080 - 2,520	1,835 - 4,281	360	33.4	6	1.8	1,400	635.0	54	1371.6	54	1371.6	93.6	2377.4
36FS8	1,440 - 3,360	2,446 - 5,707	480	44.6	8	2.4	1,700	771.1	54	1371.6	54	1371.6	117.6	2987.0
49FS4	981 - 2,289	1,666 - 3,888	327	30.4	4	1.2	1,500	680.4	62	1574.8	62	1574.8	70.1	1780.5
49FS6	1,470 - 3,430	2,497 - 5,826	490	45.5	6	1.8	1,800	816.5	62	1574.8	62	1574.8	94.1	2390.1
49FS8	1,959 - 4,571	3,328 - 7,765	653	60.7	8	2.4	2,100	952.5	62	1574.8	62	1574.8	118.1	2999.7
64FS6	1,920 - 4,480	3,261 - 7,610	640	59.5	6	1.8	2,100	952.5	70	1778.0	70	1778.0	94.1	2390.1
64FS8	2,559 - 5,971	4,347 - 10,143	853	79.2	8	2.4	2,500	1134.0	70	1778.0	70	1778.0	118.1	2999.7
64FS10	3,198 - 7,462	5,432 - 12,675	1066	99.0	10	3.0	2,800	1270.1	70	1778.0	70	1778.0	142.1	3609.3

* Based on clean bag filters. ** Contact home office.

STANDARD FEATURES & EQUIPMENT OPTIONS

COLLECTOR DESIGN	STD	OPT	HOPPER DESIGN (NOT AVAILABLE ON BIN VENT)	STD	OPT
Side Bag Removal	X		60° Hoppers	X	
All-Welded, Carbon Steel Construction, 12 Gauge	X		Flanged Dirty Air Inlet	X	
Rated 17-inch (431.8-Millimeter) Water Gauge	X		Inlet Deflector	X	
Compressed Air Manifold with Drain	X		Flanged Hopper Discharge	X	
Flanged Clean Air Outlet	X		Hopper Access Panel	X	
High Performance Venturis	X		Coupling for High Level Indicator	X	
Easy-Lift Lifting Ears	X		High Level Indicator		X
Integrated Exhaust Weatherhood		X	HOPPER DISCHARGE (NOT AVAILABLE ON BIN VENT)		
Ladder and Platform Assemblies		X	Dumpster Discharge with Pneumatic Lid and Controls		X
Stainless Steel Construction		X	Rack and Pinion Gate		X
Factory Mounted Direct Drive Fans with Outlet Hood and Birdscreen with NEMA Premium** Efficient Motor		X	55-Gallon (208.2-Liter) Drum Cover		X
High Performance Fan Silencer		X	Various Rotary Valve Options		X
Slide Gate Fan Damper		X	SUPPORT STRUCTURE† (NOT AVAILABLE ON BIN VENT)		
Shaving Control System (SCS)		X	36" (914.4 mm) Clearance Leg Pack		X
BAGS & CAGES			Custom Clearance Leg Packs		X
Dura-Life™ Twice the Life Polyester Bags	X		ELECTRICAL CONTROLS, GAUGES & ENCLOSURES		
Stainless Steel Bag Clamps	X		Goyen Diaphragm Valves	X	
Galvanized Cages	X		120V Timerboard and Solenoid Valves in NEMA 4 Enclosure	X	
Ultra-Web® SB Pleated Bags		X	Magnehelic*** Gauge	X	
Variety of Bag Media Options		X	Photohelic*** Gauge		X
PAINT SYSTEM			Photohelic Gauge (Weatherproof)		X
Prime Coated Interior	X		Delta P Control Panel without Timer		X
Durable Industrial Finish Exterior	X		SAFETY FEATURES		
Standard Colors: Torit Blue or Storm White	X		4"x4" (101.6 x 101.6 mm) Bag Safety Grid (bin vent units only)	X	
Custom Colors		X	Sprinkler Access Ports		X
* All 60 Hz motors 1 HP and above are EISA compliant and considered NEMA Premium* per Table 12-12. NEMA Premium is a registered trademark of National Electrical Manufacturers Association.			Sprinkler Pack Assembly		X
** Magnehelic and Photohelic are registered trademarks of Dwyer Instruments, Inc.			Explosion Vents		X
† Donaldson Torit equipment is designed to IBC guidelines for specific wind speed exposure and seismic spectral acceleration at grade level. Contact your Donaldson Torit representative for detailed information available on the equipment's Spec Control drawings. Equipment may be customized to meet unique, customer-specified site requirements.			Ladder Safety System		X
			WARRANTY		
			10-Year Warranty	X	

Significantly improve the performance of your collector with genuine Donaldson Torit replacement filters and parts. **Call Donaldson Torit at 800-365-1331.**

Important Notice

Many factors beyond the control of Donaldson can affect the use and performance of Donaldson products in a particular application, including the conditions under which the product is used. Since these factors are uniquely within the user's knowledge and control, it is essential the user evaluate the products to determine whether the product is fit for the particular purpose and suitable for the user's application. All products, product specifications, availability and data are subject to change without notice, and may vary by region or country.



Donaldson Company, Inc.
Minneapolis, MN
donaldson.com • shop.donaldson.com

North America
Email: donaldson@donaldson.com
Phone: (USA): 800-365-1331 • (MX): 800-343-3639

Australasia
Email: marketing.australia@donaldson.com
Phone: +61 2 4350 2000
Toll Free: (AU) 1800 345 837 • (NZ) 0800 743 387

F118145 ENG (10/18) FS Pulse Jet Baghouse and Bin Vents ©2011-2018 Donaldson Company, Inc.
Donaldson, Torit, Dura-Life, Ultra-Web and the color blue are marks of Donaldson Company, Inc. All other marks belong to their respective owners.

China IAF
Email: info.cn@donaldson.com
Phone: (86) 400-820-1038

Donaldson Europe B.V.B.A.
Email: IAF-europe@donaldson.com
Phone: +32 (0) 16 38 38 11

India
Email: marketing.India@donaldson.com
Phone: +91 124 4807400
Toll Free: 18001035018

Latinoamerica
Email: IndustrialAir@donaldson.com
Phone: +52 449 300 2442

South Africa
Email: SAMarketing@donaldson.com
Phone: +27 11 997 6000

Southeast Asia IAF
Email: IAF.SEA@donaldson.com
Phone: (65) 63117373