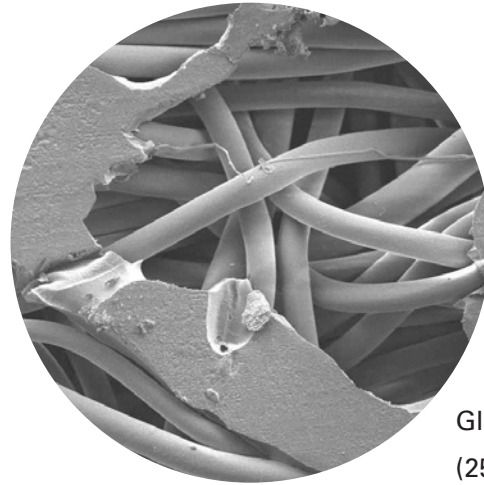




GLAZED POLYESTER BAG FILTERS

BAG FILTER MEDIA FOR BAGHOUSE DUST COLLECTORS



Glazed Polyester (250x)

Needled 16 oz. glazed polyester felt is a versatile filtration media used in pulse jet baghouse dust collectors. The glazing process provides a better dust cake release by melting the outermost fibers and smearing them to create a smooth, high sheen surface. This material is strong, abrasion and chemical resistant and good for applications up to 275° F.

PREMIUM CONSTRUCTION

- Heat-seam construction results in a seam with increased dependability and efficiency
- Available in a wide variety of top and bottom configurations, diameters and lengths
- Options include ground wires, abrasion cuffs and expansion rings

APPLICATIONS

- General purpose applications including those requiring good dust cake release. Used in cement and quarry, metal processing, grain, tobacco, flour, wood and other nuisance dust industries.

Available in configurations for many popular brands of baghouse collectors.

MEDIA SPECIFICATIONS

| | |
|------------------|-----------------------------------------------------------------|
| Bag Technology | Glazed |
| Substrate | Needled Polyester Felt |
| Fabric Weight | 16.0 oz./yd ² (540 g/m ²) |
| Thickness | 0.060-0.080 inches (1.5-2.0 mm) |
| Air Permeability | 25-35 (cfm @ 0.5 "wg) 42-60 (m ³ /hr @ 1.25 mbar) |

MEDIA COMPATIBILITY DATA

| | |
|-------------------------------|--------------|
| Maximum Operating Temperature | 275°F, 135°C |
| Maximum Surge Temperature | 300°F, 149°C |
| Abrasion Resistance | Good |
| Alkali Resistance | Good |
| Subject to Hydrolysis** | Yes |
| Chemical Resistance*** | Good |

BAG CLEANING AND DISPOSAL

For environmental compliance, it is highly recommended to consult federal, state and local environmental protection guidelines to determine the impact of washing or disposing of dirty bags. Many industry dusts are hazardous to our environment and are regulated by air quality standards and by national and local water standards during disposal.

CONFIGURATIONS

| Collector Models | Filtration Area | | Outer Diameter | | Length* | | Flat Width | |
|-----------------------------|-----------------|----------------|----------------|---------------|---------|--------|------------|-------|
| | ft ² | m ² | in | mm | in | mm | in | mm |
| FS/RSD Baghouse | 6.7 | 0.6 | 5.875 | 149.23 | 52 | 1320.8 | 9.23 | 234.4 |
| | 9.7 | 0.9 | 5.875 | 149.23 | 76 | 1930.4 | 9.23 | 234.4 |
| | 12.8 | 1.2 | 5.875 | 149.23 | 100 | 2540 | 9.23 | 234.4 |
| | 15.9 | 1.5 | 5.875 | 149.23 | 124 | 3149.6 | 9.23 | 234.4 |
| | 19.0 | 1.8 | 5.875 | 149.23 | 148 | 3759.2 | 9.23 | 234.4 |
| FT/LP Baghouse | 6.2 | 6.0 | 5.875 | 149.23 | 48.5 | 1231.9 | 9.23 | 234.4 |
| | 9.3 | 0.9 | 5.875 | 149.23 | 72.5 | 1841.5 | 9.23 | 234.4 |
| | 12.4 | 1.2 | 5.875 | 149.23 | 96.5 | 2451.1 | 9.23 | 234.4 |
| | 15.4 | 1.4 | 5.875 | 149.23 | 120.5 | 3060.7 | 9.23 | 234.4 |
| | 18.5 | 1.7 | 5.875 | 149.23 | 144.5 | 3670.3 | 9.23 | 234.4 |
| HP Baghouse - HPH, HPT, HPW | 10.2 | 1.0 | 3 x 6.6 | 76.2 x 167.64 | 99 | 2515 | 7.26 | 184.4 |
| HPB Baghouse | 7.1 | 0.7 | 4.5 | 114.3 | 73 | 1854 | 7.07 | 179.6 |
| | 9.4 | 0.9 | 4.5 | 114.3 | 97 | 2464 | 7.07 | 179.6 |
| | 11.8 | 1.1 | 4.5 | 114.3 | 121 | 3073 | 7.07 | 179.6 |
| MB Baghouse - MBT, MBW | 8.0 | 0.7 | 6.14 | 155.96 | 60 | 1524 | 9.64 | 244.9 |
| | 9.6 | 0.9 | 6.14 | 155.96 | 72 | 1829 | 9.64 | 244.9 |
| | 12.8 | 1.2 | 6.14 | 155.96 | 96 | 2348 | 9.64 | 244.9 |
| | 16.0 | 1.5 | 6.14 | 155.96 | 120 | 3048 | 9.64 | 244.9 |
| | 19.2 | 1.8 | 6.14 | 155.96 | 144 | 3658 | 9.64 | 244.9 |
| PJ & PJD Baghouse - PJ, PJD | 7.6 | 0.7 | 4.85 | 123.19 | 77 | 1956 | 7.62 | 193.6 |
| | 10.1 | 1.0 | 4.85 | 123.19 | 101 | 2565 | 7.62 | 193.6 |
| | 12.7 | 1.2 | 4.85 | 123.19 | 125 | 3175 | 7.62 | 193.6 |
| | 15.2 | 1.4 | 4.85 | 123.19 | 149 | 3785 | 7.62 | 193.6 |
| RF Baghouse | 7.6 | 0.7 | 3 x 6.6 | 76.2 x 167.64 | 75 | 1905 | 7.26 | 184.4 |
| | 10.1 | 1.0 | 3 x 6.6 | 76.2 x 167.64 | 99 | 2615 | 7.26 | 184.4 |
| | 12.7 | 1.2 | 3 x 6.6 | 76.2 x 167.64 | 123 | 3124 | 7.26 | 184.4 |
| | 15.2 | 1.4 | 3 x 6.6 | 76.2 x 167.64 | 147 | 3734 | 7.26 | 184.4 |
| RJ Baghouse | 7.2 | 0.7 | 14.8 x 3.4 | 375.9 x 86.4 | 30 | 762 | 16.87 | 428.5 |
| | 10.3 | 1.0 | 14.8 x 3.4 | 375.9 x 86.4 | 43 | 1092 | 16.87 | 428.5 |
| | 12.9 | 1.2 | 14.8 x 3.4 | 375.9 x 86.4 | 54 | 1372 | 16.87 | 428.5 |
| | 15.8 | 1.5 | 14.8 x 3.4 | 375.9 x 86.4 | 66 | 1676 | 16.87 | 428.5 |
| | 18.7 | 1.7 | 14.8 x 3.4 | 375.9 x 86.4 | 78 | 1981 | 16.87 | 428.5 |
| | 21.6 | 2.0 | 14.8 x 3.4 | 375.9 x 86.4 | 90 | 2286 | 16.87 | 428.5 |
| | 24.4 | 2.3 | 14.8 x 3.4 | 375.9 x 86.4 | 102 | 2591 | 16.87 | 428.5 |
| | 30.2 | 2.8 | 14.8 x 3.4 | 375.9 x 86.4 | 126 | 3200 | 16.87 | 428.5 |
| | 35.9 | 3.3 | 14.8 x 3.4 | 375.9 x 86.4 | 150 | 3810 | 16.87 | 428.5 |

* Rounded to the nearest inch (mm). ** Environmental conditions involving combinations of high temperature, corrosive material and moisture can reduce media strength. Reduction in media strength may compromise bag integrity and performance. *** A combination of chemicals may alter fiber resistance to the specified performance level. Chemical attack may compromise bag integrity and performance.

Significantly improve the performance of your collector with genuine Donaldson Torit replacement filters and parts. **Call Donaldson Torit at 800-365-1331.**

Important Notice

Many factors beyond the control of Donaldson can affect the use and performance of Donaldson products in a particular application, including the conditions under which the product is used. Since these factors are uniquely within the user's knowledge and control, it is essential the user evaluate the products to determine whether the product is fit for the particular purpose and suitable for the user's application. All products, product specifications, availability and data are subject to change without notice, and may vary by region or country.



Donaldson Company, Inc.
Minneapolis, MN
donaldsontorit.com • shop.donaldson.com

North America
Email: donaldsontorit@donaldson.com
Phone: (USA): 800-365-1331 • (MX): 800-343-3639

Australasia
Email: marketing.australia@donaldson.com
Phone: +61 2 4350 2000
Toll Free: (AU) 1800 345 837 • (NZ) 0800 743 387

F118106 ENG (06/18) Polyester Felt Glazed Bag Filter Media ©2015-2018 Donaldson Company, Inc.

Donaldson, Torit and the color blue are marks of Donaldson Company, Inc. All other marks belong to their respective owners.

China IAF
Email: info.cn@donaldson.com
Phone: (86) 400-820-1038

Donaldson Europe B.V.B.A.
Email: IAF-europe@donaldson.com
Phone: +32 (0) 16 38 38 11

India
Email: marketing.India@donaldson.com
Phone: +91 124 4807400
Toll Free: 18001035018

Latinoamerica
Email: IndustrialAir@donaldson.com
Phone: +52 449 300 2442

South Africa
Email: SAMarketing@donaldson.com
Phone: +27 11 997 6000

Southeast Asia IAF
Email: IAF.SEA@donaldson.com
Phone: (65) 63117373