

- Specially designed for dry, high temperature applications
- Combination of two proprietary blends of high temperature synthetic fibers: Kevlar®\* and Nomex®\*
- MERV\*\* 13 filtration efficiency rating per ASHRAE 52.2-2007
- Very good choice for metallurgical, chemical, and industrial applications
- Exceptional filtration at temperatures up to 350°F (177°C)
- Excellent abrasion resistance
- Very good chemical tolerance\*\*

## APPLICATIONS

- Metallurgical, chemical processing and industrial applications
- High temperature applications
- Stainless steel high temperature is recommended for applications requiring good chemical tolerance

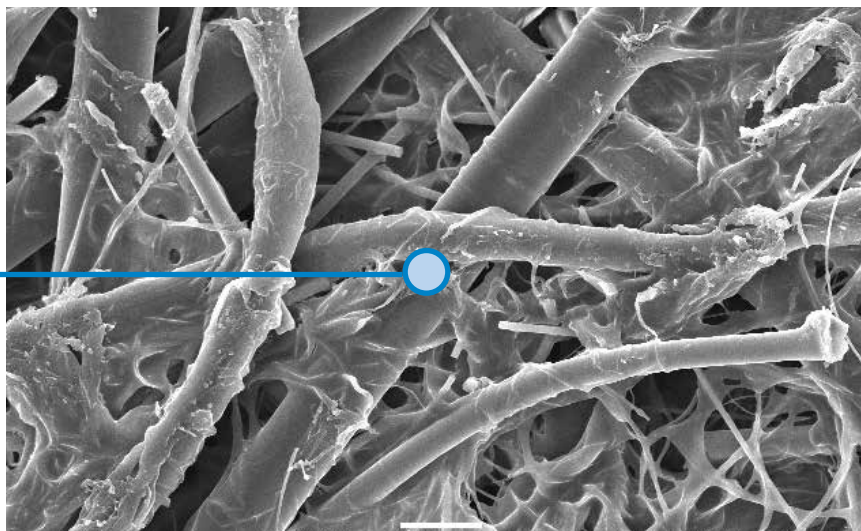


**High Temperature Cartridge**

## SEM† IMAGES

1 micron = 1/25,400 of an inch (1/1000 of a millimeter)

**10 micron**



**High Temperature Media (600x)**

\* Kevlar and Nomex are registered trademarks of E.I. DuPont de Nemours & Co., Inc.

\*\* Refer to Technical Information on page 2.

† Scanning Electron Microscope

## SPECIFICATIONS

MEDIA COMPATIBILITY DATA	
Temperature Resistance	350°F 177°C
Moisture Absorption**	Maximum 14% @ 70°F (21°C) and 65% RH
Chemical Tolerance***	Acids→Good      Oxidants→Good Bases→Good      Solvents→Good
Abrasion Resistance	Excellent per TAPPI 476 (Taber Method)

MEDIA COMPOSITION	
Substrate	Proprietary blend of synthetic fibers including Kevlar & Nomex

MEDIA EFFICIENCY	
U.S. Efficiency Rating	MERV* 13 per ASHRAE 52.2-2007

CARTRIDGE CONSTRUCTION	
Standard Construction	Galvanized metal end caps Galvanized expanded metal liner 72% open area Special adhesives and gaskets for structural and sealing integrity
Options	Optional stainless steel liner and end caps

## CONFIGURATIONS

Collector Models	Filter Area		Pleat Height		Cartridge Dimensions	
	ft <sup>2</sup>	m <sup>2</sup>	in	mm	in	mm
Bin Vent (TBV)	205.0	19.1	2.0	50.8	12.74 x 26.0	323.6 x 660.4
Downflo® (DF)	203.0	18.9	2.0	50.8	12.74 x 26.0	323.6 x 660.4
Downflo II (DFT)	220.0	20.4	2.0	50.8	13.84 x 26.0	351.5 x 660.4
Downflo Containment System (DCS)	164.0	15.2	1.5	38.1	11.4 x 14.4 x 26.0	288.5 x 364.7 x 660.4
Downflo Oval (DFO)	164.0	15.2	1.5	38.1	11.4 x 14.4 x 26.0	288.5 x 364.7 x 660.4
Downflo® Evolution (DFE)	220.0	20.4	2.0	50.8	13.74 x 13.74 x 26.0	349.1 x 349.1 x 660.4
Downflo WorkStation (DWS)	164.0	15.2	1.5	38.1	11.4 x 14.4 x 26.0	288.5 x 364.7 x 660.4
MTD	205.0	19.1	2.0	50.8	12.74 x 26.0	323.6 x 660.4
TD Small	54.0	5.0	2.0	50.8	7.9 x 16.0	20.1 x 406.4
TD Large	205.0	19.1			12.74 x 26.0	323.6 x 660.4

\* The Minimum Efficiency Reporting Value (MERV) of this filter cartridge has been determined through independent laboratory testing using ASHRAE 52.2 (2007) test standards. The MERV rating was determined at a face velocity of 118 feet per minute (36.0 meters per minute) and loading up to four inches (101.6 millimeters) water gauge. Actual efficiency of any filter cartridge will vary according to the specific application parameters. Dust concentration, airflow, particle characteristics, and pulse cleaning methods all affect filtration efficiency.

\*\* Environmental conditions involving combinations of high temperature, corrosive material, and moisture can reduce media strength. Reduction in media strength may compromise cartridge integrity and performance.

\*\*\* A combination of chemicals may alter fiber resistance to the specified performance level. Chemical attack may compromise cartridge integrity and performance.

Significantly improve the performance of your collector with genuine Donaldson Torit replacement filters and parts. **Call Donaldson Torit at 800-365-1331.**

### Important Notice

Many factors beyond the control of Donaldson can affect the use and performance of Donaldson products in a particular application, including the conditions under which the product is used. Since these factors are uniquely within the user's knowledge and control, it is essential the user evaluate the products to determine whether the product is fit for the particular purpose and suitable for the user's application. All products, product specifications, availability and data are subject to change without notice, and may vary by region or country.



Donaldson Company, Inc.  
Minneapolis, MN  
[donaldson.com](http://donaldson.com) • [shop.donaldson.com](http://shop.donaldson.com)

**North America**  
Email: [donaldson@donaldson.com](mailto:donaldson@donaldson.com)  
Phone: (USA): 800-365-1331 • (MX): 800-343-3639

**Australasia**  
Email: [marketing.australia@donaldson.com](mailto:marketing.australia@donaldson.com)  
Phone: +61 2 4350 2000  
Toll Free: (AU) 1800 345 837 • (NZ) 0800 743 387

F118118 ENG (06/18) High Temperature Cartridge ©2012-2018 Donaldson Company, Inc.

Donaldson, Torit, Downflo and the color blue are marks of Donaldson Company, Inc. All other marks belong to their respective owners.

**China IAF**  
Email: [info.cn@donaldson.com](mailto:info.cn@donaldson.com)  
Phone: (86) 400-820-1038

**Donaldson Europe B.V.B.A.**  
Email: [IAF-europe@donaldson.com](mailto:IAF-europe@donaldson.com)  
Phone: +32 (0) 16 38 38 11

**India**  
Email: [marketing.India@donaldson.com](mailto:marketing.India@donaldson.com)  
Phone: +91 124 4807400  
Toll Free: 18001035018

**Latinoamerica**  
Email: [IndustrialAir@donaldson.com](mailto:IndustrialAir@donaldson.com)  
Phone: +52 449 300 2442

**South Africa**  
Email: [SAMarketing@donaldson.com](mailto:SAMarketing@donaldson.com)  
Phone: +27 11 997 6000

**Southeast Asia IAF**  
Email: [IAF.SEA@donaldson.com](mailto:IAF.SEA@donaldson.com)  
Phone: (65) 63117373