

- Long filter life and high filtration efficiency on many applications
- MERV* 10 filtration efficiency rating per ASHRAE 52.2-2007
- Enhanced performance due to a unique combination of fiber sizes and a more uniform fiber distribution indicates excellent performance
- Reduced energy requirements and lower operating costs due to low resistance to airflow
- Flame retardant media available
- Superior to felts, fabrics, cotton cloths, and similar media

APPLICATIONS

- Recommended for a wide variety of applications
- Good choice for dry, coarse particulate
- Economical choice for operations with forced or cyclical filter replacement (independent of pressure drop)

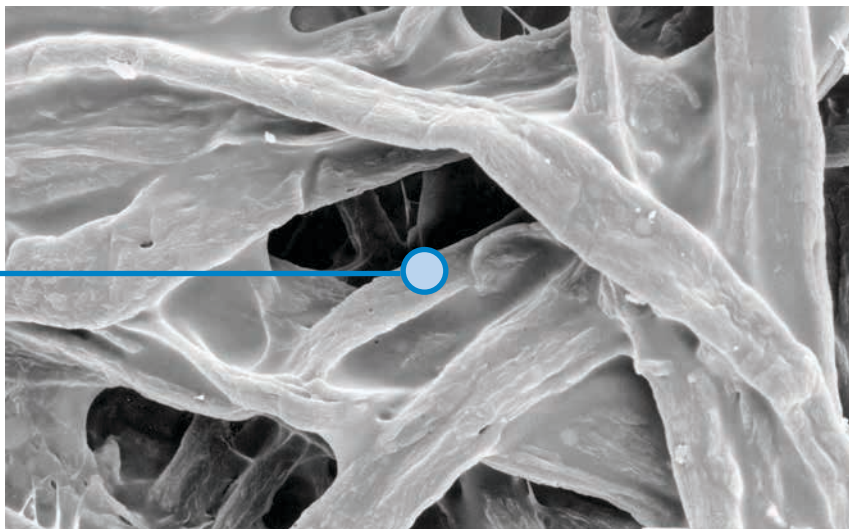


Cellulex Cartridge

SEM† IMAGES

1 micron = 1/25,400 of an inch (1/1000 of a millimeter)

10 micron



Cellulex Media (600x)

† Scanning Electron Microscope

* Refer to Minimum Efficiency Reporting Value on page 2.

SPECIFICATIONS

MEDIA COMPOSITION	
Substrate	Proprietary blend of cellulose fibers Flame retardant version per UL [†] Standard 558, TAPPI Standard T 461 cm-09
CARTRIDGE CONSTRUCTION	
Standard Construction	Galvanized metal end caps Galvanized expanded metal liner 72% open area Urethane gasket
Options	Optional stainless steel liner and end caps

MEDIA EFFICIENCY	
U.S. Efficiency Rating	MERV* 10 per ASHRAE 52.2-2007
MEDIA COMPATIBILITY DATA	
Temperature Resistance	180°F / 82°C
Moisture Absorption**	Maximum 14% @ 70°F (21°C) and 65% RH
Chemical Tolerance***	Acids→Poor Oxidants→Poor Bases→Fair Solvents→Fair
Abrasion Resistance	Good per TAPPI 476 (Taber Method)

CURRENT AVAILABLE CONFIGURATIONS

Collector Models		Filter Area		Dimensions		Cellulex		
		ft ²	m ²	in	mm	Standard	FR	NL
Ambient Air Tubesheets	Coned	260	24.2	12.7 x 15.9 x 26	322.6 x 403.9 x 660.4	•	•	•
	Cylindrical	226	21.0	12.74 x 26	323.6 x 660.4	•	•	•
	Downflo Oval (DFO)	190	17.6	11.4 x 14.4 x 26	289.6 x 365.8 x 660.4	•	•	•
AerBooth		226	21.0	12.74 x 26	323.6 x 660.4	•	•	•
AT-3000		212	19.7	13.84 x 22	351.5 x 558.8		•	
Bin Vent (TBV)		226	21.0	12.74 x 26	323.6 x 660.4	•	•	•
CX Series		254	23.6	13.84 x 26	351.5 x 660.4	•	•	
Downdraft Bench		254	23.6	13.84 x 26	351.5 x 660.4	•	•	
Downflo® (DF)		226	21.0	12.74 x 26	323.6 x 660.4	•	•	•
Downflo II (DFT)		254	23.6	13.84 x 26	351.5 x 660.4	•	•	•
Downflo (SDF)		103	9.6	9.21 x 22.3	233.9 x 566.2	•		
Environmental Control Booth™ (ECB)		226	21.0	12.74 x 26	323.6 x 660.4	•	•	•
MTD		226	21.0	12.74 x 26	323.6 x 660.4	•	•	•
ProBooth™		226	21.0	12.74 x 26	323.6 x 660.4	•	•	•
ShopPro™		65	6.0	16.6 x 10.1	421.6 x 256.5	•		
		135	12.5	16.6 x 20.1	421.6 x 510.5	•		
		177	16.4	16.6 x 26.1	421.6 x 662.9	•		
TD Large		226	21.0	12.74 x 26	323.6 x 660.4	•	•	•
TD Small		60	5.6	7.9 x 16	200.7 x 406.4	•		

† UL is a registered trademark of Underwriters Laboratories, Inc.

* The Minimum Efficiency Reporting Value (MERV) of this filter cartridge has been determined through independent laboratory testing using ASHRAE 52.2 (2007) test standards. The MERV rating was determined at a face velocity of 118 feet per minute (36.0 meters per minute) and loading up to four inches (101.6 millimeters) water gauge. Actual efficiency of any filter cartridge will vary according to the specific application parameters. Dust concentration, airflow, particle characteristics, and pulse cleaning methods all affect filtration efficiency.

** Environmental conditions involving combinations of high temperature, corrosive material, and moisture can reduce media strength. Reduction in media strength may compromise cartridge integrity and performance.

*** A combination of chemicals may alter fiber resistance to the specified performance level. Chemical attack may compromise cartridge integrity and performance.

Significantly improve the performance of your collector with genuine Donaldson Torit replacement filters and parts. **Call Donaldson Torit at 800-365-1331.**

Important Notice

Many factors beyond the control of Donaldson can affect the use and performance of Donaldson products in a particular application, including the conditions under which the product is used. Since these factors are uniquely within the user's knowledge and control, it is essential the user evaluate the products to determine whether the product is fit for the particular purpose and suitable for the user's application. All products, product specifications, availability and data are subject to change without notice, and may vary by region or country.



Donaldson Company, Inc.
Minneapolis, MN
donaldson.com • shop.donaldson.com

North America
Email: donaldson@donaldson.com
Phone: (USA): 800-365-1331 • (MX): 800-343-3639

Australasia
Email: marketing.australia@donaldson.com
Phone: +61 2 4350 2000
Toll Free: (AU) 1800 345 837 • (NZ) 0800 743 387

F118114 ENG (06/18) Cellulex Cartridge ©2011-2018 Donaldson Company, Inc.

Donaldson, Torit, Cellulex, Downflo, ProBooth, ShopPro and the color blue are marks of Donaldson Company, Inc. All other marks belong to their respective owners.

China IAF
Email: info.cn@donaldson.com
Phone: (86) 400-820-1038

Donaldson Europe B.V.B.A.
Email: IAF-europe@donaldson.com
Phone: +32 (0) 16 38 38 11

India
Email: marketing.India@donaldson.com
Phone: +91 124 4807400
Toll Free: 18001035018

Latinoamerica
Email: IndustrialAir@donaldson.com
Phone: +52 449 300 2442

South Africa
Email: SAMarketing@donaldson.com
Phone: +27 11 997 6000

Southeast Asia IAF
Email: IAF.SEA@donaldson.com
Phone: (65) 63117373