

- Extended filter life over traditional untreated cellulose on applications requiring a sturdier, more humidity resistant media
- Stronger and more durable than conventional cellulose media due to exclusive media construction and a unique resin system
- Special media treatment allows filters to maintain low airflow restriction in humid operating conditions, resulting in reduced energy requirements and lower operating costs
- MERV* 10 filtration efficiency rating per ASHRAE Standard 52.2-2007
- Flame retardant media available



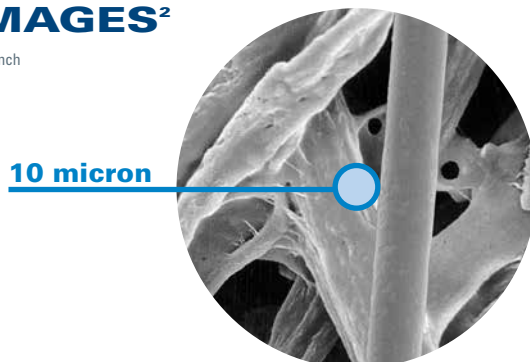
Endura-Tek Cartridge

APPLICATIONS

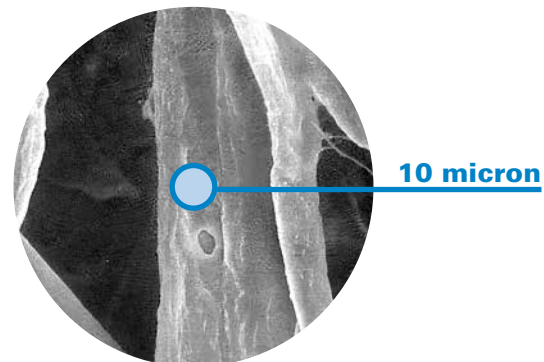
- Recommended for a wide variety of applications
- Economical solution to applications where untreated cellulose cartridges begin to fail
- Economical choice for operations with scheduled filter replacement independent of pressure drop

SEM IMAGES²

1 micron = 1/25,400 of an inch
(1/1000 of a millimeter)



Endura-Tek Media (600x)



Competitive Media (600x)

SPECIFICATIONS

MEDIA COMPOSITION		MEDIA EFFICIENCY	
Substrate	Proprietary blend of cellulose and synthetic fibers	U.S. Efficiency Rating	MERV* 10 per ASHRAE 52.2-2007
CARTRIDGE CONSTRUCTION		MEDIA COMPATIBILITY DATA	
Standard Construction	Galvanized expanded metal liners 72% open area Galvanized metal end caps	Temperature Resistance	180°F 82°C
Structural Integrity	Donaldson's Pleatloc™ design maintains uniform pleat spacing throughout filter life Adhesive spiral beading inside the filter secures pleats and reduces pleat tip abrasion	Moisture Absorption**	Maximum 14% @ 70°F (21°C) and 65% RH
Top Gasket	Molded one-piece urethane gaskets provide a positive, airtight seal	Chemical Tolerance***	Acids→Poor Oxidants→Poor Bases→Fair Solvents→Fair
		Abrasion Resistance	Excellent per TAPPI 476 (Taber Method)

CURRENT AVAILABLE CONFIGURATIONS

Collector Models	Cartridge Dimensions			Endura-Tek	Endura-Tek FR
	m ²	in	mm		
AerTable	22.3	12.74 x 26	323.6 x 660.4	•	•
Bin Vent (TBV)	21.0	12.74 x 26	323.6 x 660.4	•	•
Downdraft Bench	23.5	13.84 x 26	351.5 x 660.4	•	•
Downflo® (DF)	21.0	12.74 x 26	323.6 x 660.4	•	•
Downflo® II (DFT)	23.5	13.84 x 26	351.5 x 660.4	•	•
Downflo® Containment System (DCS)	17.7	11.4 x 14.4 x 26	289.6 x 365.8 x 660.4	•	
Downflo® Oval (DFO)	17.7	11.4 x 14.4 x 26	289.6 x 365.8 x 660.4	•	
Downflo® Workstation (DWS)	17.7	11.4 x 14.4 x 26	289.6 x 365.8 x 660.4	•	
Environmental Contro Booth (ECB)	21.0	12.74 x 26	323.6 x 660.4	•	•
MTD	21.0	12.74 x 26	323.6 x 660.4	•	•
ProBooth™	21.0	12.74 x 26	323.6 x 660.4	•	•
TD Large	21.0	12.74 x 26	323.6 x 660.4	•	•
TD Small	5.5	7.9 x 16	200.7 x 406.4	•	•
WeldAir	17.2	13.84 x 18	351.5 x 457.2		•

* The Minimum Efficiency Reporting Value (MERV) of this filter cartridge has been determined through independent laboratory testing using ASHRAE 52.2 (2007) test standards. The MERV rating was determined at a face velocity of 118 feet (36.0 meters) per minute and loading up to 4 inches (101.6 millimeters) water gauge. Actual efficiency of any filter cartridge will vary according to the specific application parameters. Dust concentration, airflow, particle characteristics, and pulse cleaning methods all affect filtration efficiency.

** Environmental conditions involving combinations of high temperature, corrosive material, and moisture can reduce media strength. Reduction in media strength may compromise cartridge integrity and performance.

*** A combination of chemicals may alter fiber resistance to the specified performance level. Chemical attack may compromise cartridge integrity and performance.

Significantly improve the performance of your collector with genuine Donaldson Torit replacement filters and parts. **Call Donaldson Torit at 800-365-1331.**

Important Notice

Many factors beyond the control of Donaldson can affect the use and performance of Donaldson products in a particular application, including the conditions under which the product is used. Since these factors are uniquely within the user's knowledge and control, it is essential the user evaluate the products to determine whether the product is fit for the particular purpose and suitable for the user's application. All products, product specifications, availability and data are subject to change without notice, and may vary by region or country.



Donaldson Company, Inc.
Minneapolis, MN
donaldson.com • shop.donaldson.com

North America
Email: donaldson@donaldson.com
Phone: (USA): 800-365-1331 • (MX): 800-343-3639

Australasia
Email: marketing.australia@donaldson.com
Phone: +61 2 4350 2000
Toll Free: (AU) 1800 345 837 • (NZ) 0800 743 387

F118115 ENG (06/18) Endura-Tek Cartridge ©2012-2018 Donaldson Company, Inc.

Donaldson, Torit, Endura-Tek, Downflo, ProBooth and the color blue are marks of Donaldson Company, Inc. All other marks belong to their respective owners.

China IAF
Email: info.cn@donaldson.com
Phone: (86) 400-820-1038

Donaldson Europe B.V.B.A.
Email: IAF-europe@donaldson.com
Phone: +32 (0) 16 38 38 11

India
Email: marketing.India@donaldson.com
Phone: +91 124 4807400
Toll Free: 18001035018

Latinoamerica
Email: IndustrialAir@donaldson.com
Phone: +52 449 300 2442

South Africa
Email: SAMarketing@donaldson.com
Phone: +27 11 997 6000

Southeast Asia IAF
Email: IAF.SEA@donaldson.com
Phone: (65) 63117373