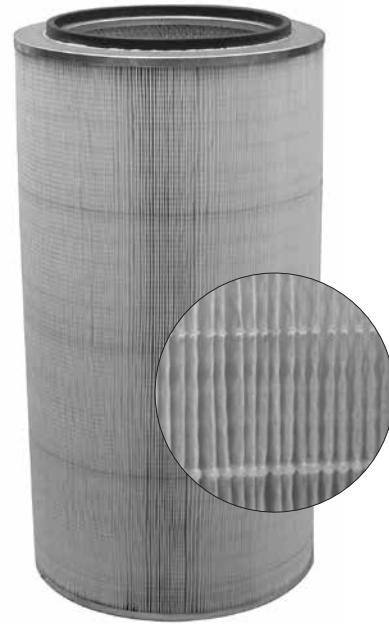


- Extended filter life over traditional untreated cellulose on applications requiring a sturdier, more humidity resistant media
- Stronger and more durable than conventional cellulose media due to exclusive media construction and a unique resin system
- Specialized bead pack design to increase the strength of the cartridge filter to withstand the most challenging applications
- Special media treatment allows filters to maintain low airflow restriction in humid operating conditions, resulting in reduced energy requirements and lower operating costs
- MERV* 10 filtration efficiency rating per ASHRAE Standard 52.2-2007
- Flame retardant media available

* Refer to Minimum Efficiency Reporting Value on page 2.



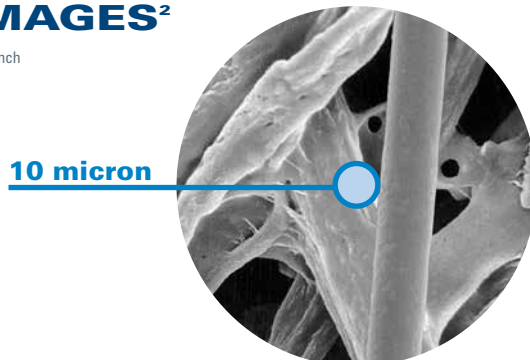
Endura-Tek XL Cartridge

APPLICATIONS

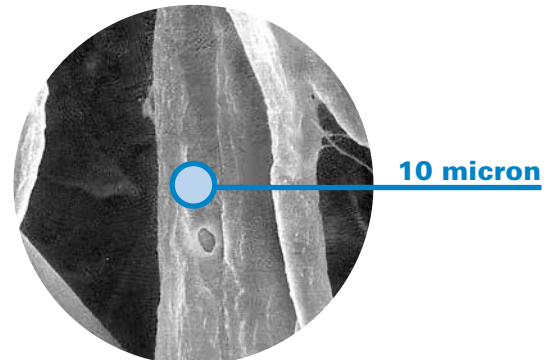
- Recommended for a wide variety of applications
- Designed for large particulate applications where additional pack strength is required

SEM IMAGES²

1 micron = 1/25,400 of an inch
(1/1000 of a millimeter)



Endura-Tek Media (600x)



Competitive Media (600x)

SPECIFICATIONS

MEDIA COMPOSITION	
Substrate	Proprietary blend of cellulose and synthetic fibers

MEDIA EFFICIENCY	
U.S. Efficiency Rating	MERV* 10 per ASHRAE 52.2-2007

CARTRIDGE CONSTRUCTION	
Standard Construction	Galvanized expanded metal liners 60% open area Galvanized metal end cap
Structural Integrity	Donaldson's Pleatloc™ design maintains uniform pleat spacing throughout filter life Adhesive spiral beading inside the filter secures pleats and reduces pleat tip abrasion Bead pack design adds extra strength during high load pulsing
Top Gasket	Molded one-piece urethane gaskets provide a positive, airtight seal

MEDIA COMPATIBILITY DATA	
Temperature Resistance	180°F 82°C
Moisture Absorption**	Maximum 14% @ 70°F (21°C) and 65% RH
Chemical Tolerance***	Acids→Poor Oxidants→Poor Bases→Fair Solvents→Fair
Abrasion Resistance	Excellent per TAPPI 476 (Taber Method)

CONFIGURATIONS

Collector Models	Filtration Area		Pleat Height		Cartridge Dimensions	
	ft²	m²	in	mm	in	mm
Downflo® II (DFT)	221	20.5	2.0	50.8	13.84 x 26	351.5 x 660.4
Downflo® Oval (DFO)	169	15.7	1.5	38.1	11.4 x 14.4 x 26	289.6 x 365.8 x 660.4
Downflo® WorkStation (DWS)	169	15.7	1.5	38.1	11.4 x 14.4 x 26	289.6 x 365.8 x 660.4
Downflo® Containment System (DCS)	169	15.7	1.5	38.1	11.4 x 14.4 x 26	289.6 x 365.8 x 660.4

* The Minimum Efficiency Reporting Value (MERV) of this filter cartridge has been determined through independent laboratory testing using ASHRAE 52.2 (2007) test standards. The MERV rating was determined at a face velocity of 118 feet (36.0 meters) per minute and loading up to 4 inches (101.6 millimeters) water gauge. Actual efficiency of any filter cartridge will vary according to the specific application parameters. Dust concentration, airflow, particle characteristics, and pulse cleaning methods all affect filtration efficiency.

** Environmental conditions involving combinations of high temperature, corrosive material, and moisture can reduce media strength. Reduction in media strength may compromise cartridge integrity and performance.

*** A combination of chemicals may alter fiber resistance to the specified performance level. Chemical attack may compromise cartridge integrity and performance.

Significantly improve the performance of your collector with genuine Donaldson Torit replacement filters and parts. **Call Donaldson Torit at 800-365-1331.**

Important Notice

Many factors beyond the control of Donaldson can affect the use and performance of Donaldson products in a particular application, including the conditions under which the product is used. Since these factors are uniquely within the user's knowledge and control, it is essential the user evaluate the products to determine whether the product is fit for the particular purpose and suitable for the user's application. All products, product specifications, availability and data are subject to change without notice, and may vary by region or country.



Donaldson Company, Inc.
Minneapolis, MN
donaldson.com • shop.donaldson.com

North America
Email: donaldson@donaldson.com
Phone: (USA): +1-800-365-1331 • (MX): +1-800-343-36-39

Australasia
Email: marketing.australia@donaldson.com
Phone: +61-2-4350-2000
Toll Free: (AU) +1800-345-837 • (NZ) +0800-743-387

F118116 ENG (02/20) Endura-Tek XL Cartridge ©2011-2020 Donaldson Company, Inc.

Donaldson, Torit, Endura-Tek, Downflo and the color blue are marks of Donaldson Company, Inc. All other marks belong to their respective owners.

China
Email: info.cn@donaldson.com
Phone: +86-400-820-1038

Donaldson Europe B.V.B.A.
Email: IAF-europe@donaldson.com
Phone: +32-16-38-3811

India
Email: info.difs@donaldson.com
Phone: +91-124-4807-400 • +18001035018

Japan
Email: jp-ndli.ifsw@donaldson.com
Phone: +81-42-540-4112

Korea
Email: iaf-kr@donaldson.com
Phone: +82-2-517-3333

Latinoamerica
Email: IndustrialAir@donaldson.com
Phone: +52-449-300-2442

South Africa
Email: SAMarketing@donaldson.com
Phone: +27-11-997-6000

Southeast Asia
Email: IAFSEA@donaldson.com
Phone: +65-6311-7373