

- Specifically designed for fibrous applications
- Wide pleat spacing and absence of outer liner permit thorough pulse cleaning
- Proprietary media blend of synthetic and glass fibers reduces pressure drop and increases airflow
- MERV* 12 filtration efficiency rating per ASHRAE 52.2-2007
- Very good chemical tolerance

APPLICATIONS

- Specifically designed for fibrous dusts of $>10\ \mu\text{m}$ particulate
- Applications include:
 - woodworking
 - grain handling
 - composite grinding
 - textiles
 - fiberglass

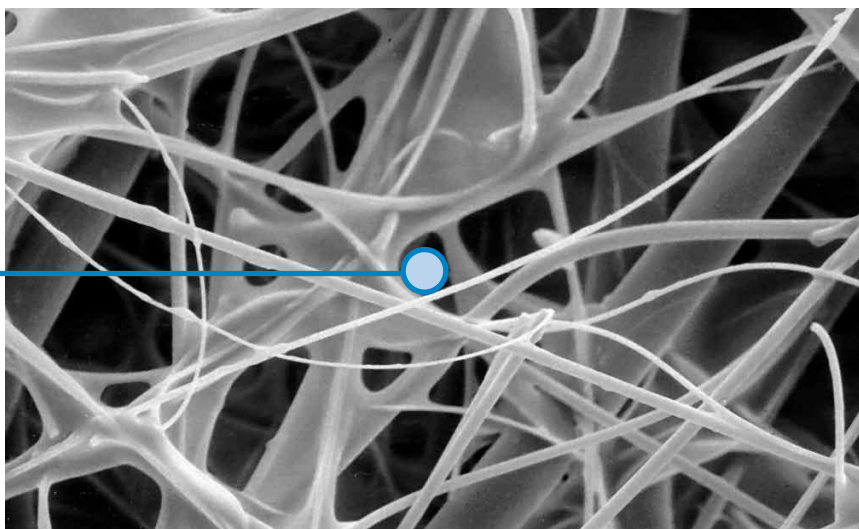


Ultra-Tek Cartridge

SEM† IMAGES

1 micron = 1/25,400 of an inch (1/1000 of a millimeter)

10 micron



Ultra-Tek Media (600x)

† Scanning Electron Microscope

* Refer to Minimum Efficiency Reporting Value on page 2.

SPECIFICATIONS

MEDIA COMPOSITION	
Substrate	Proprietary blend of synthetic and glass fibers with an average diameter of 12.0 µm
CARTRIDGE CONSTRUCTION	
Standard Construction	Galvanized expanded metal liner 60% open area Optional stainless steel liner and end caps Urethane gasket Galvanized metal end caps No outer liner
Options	Stainless steel liner and caps

MEDIA COMPATIBILITY DATA	
Temperature Resistance	180°F / 82°C
Moisture Absorption**	Maximum 0.5% @ 70°F (21°C) and 65% RH
Chemical Tolerance***	Acids→Good Oxidants→Fair Bases→Good Solvents→Good
Abrasion Resistance	Good per TAPPI 476 (Taber Method)

MEDIA EFFICIENCY	
U.S. Efficiency Rating	MERV* 12 per ASHRAE 52.2-2007

CONFIGURATIONS

Models	Filtration Area		Dimensions		Ultra-Tek	Ultra-Tek Stainless Steel
	ft²	m²	in	mm		
Bin Vent (TBV)	111	10.3	12.74 x 26	323.6 x 660	•	
Downflo® (DF)	111	10.3	12.74 x 26	323.6 x 660	•	•
Downflo II (DFT)	119	11.0	13.84 x 26	351.5 x 660	•	•
Downflo Oval (DFO)	89	8.3	11.4 x 14.4 x 26	290 x 356 x 660	•	
Downflo WorkStation (DWS)	89	8.3	11.4 x 14.4 x 26	290 x 356 x 660	•	
Downflo (SDF)	55	5.1	9.20 x 22.3	234 x 566	•	
Downflo Containment System (DCS)	69	6.4	11.4 x 14.4 x 26	290 x 356 x 660	•	
Environmental Control Booth (ECB)	111	10.3	12.74 x 26	323.6 x 660	•	
ProBooth™	111	10.3	12.74 x 26	323.6 x 660	•	
TD Large	111	10.3	12.74 x 26	323.6 x 660	•	
TD Small	43	3.9	7.90 x 16	200 x 406	•	
WeldAir	83	7.7	13.84 x 16	351.5 x 457.2	•	•

* The Minimum Efficiency Reporting Value (MERV) of this filter cartridge has been determined through independent laboratory testing using ASHRAE 52.2 (2007) test standards. The MERV rating was determined at a face velocity of 118 feet per minute (36.0 meters per minute) and loading up to four inches (101.6 millimeters) water gauge. Actual efficiency of any filter cartridge will vary according to the specific application parameters. Dust concentration, airflow, particle characteristics, and pulse cleaning methods all affect filtration efficiency.

** Environmental conditions involving combinations of high temperature, corrosive material, and moisture can reduce media strength. Reduction in media strength may compromise cartridge integrity and performance.

*** A combination of chemicals may alter fiber resistance to the specified performance level. Chemical attack may compromise cartridge integrity and performance.

Significantly improve the performance of your collector with genuine Donaldson Torit replacement filters and parts. **Call Donaldson Torit at 800-365-1331.**

Important Notice

Many factors beyond the control of Donaldson can affect the use and performance of Donaldson products in a particular application, including the conditions under which the product is used. Since these factors are uniquely within the user's knowledge and control, it is essential the user evaluate the products to determine whether the product is fit for the particular purpose and suitable for the user's application. All products, product specifications, availability and data are subject to change without notice, and may vary by region or country.



Donaldson Company, Inc.
Minneapolis, MN
donaldson.com • shop.donaldson.com

North America
Email: donaldson@donaldson.com
Phone: (USA): 800-365-1331 • (MX): 800-343-3639

Australasia
Email: marketing.australia@donaldson.com
Phone: +61 2 4350 2000
Toll Free: (AU) 1800 345 837 • (NZ) 0800 743 387

F118122 ENG (06/18) Ultra-Tek Cartridge ©2011-2018 Donaldson Company, Inc.
Donaldson, Torit, Ultra-Tek, Downflo, ProBooth and the color blue are marks of Donaldson Company, Inc. All other marks belong to their respective owners.

China IAF
Email: info.cn@donaldson.com
Phone: (86) 400-820-1038

Donaldson Europe B.V.B.A.
Email: IAF-europe@donaldson.com
Phone: +32 (0) 16 38 38 11

India
Email: marketing.India@donaldson.com
Phone: +91 124 4807400
Toll Free: 18001035018

Latinoamerica
Email: IndustrialAir@donaldson.com
Phone: +52 449 300 2442

South Africa
Email: SAMarketing@donaldson.com
Phone: +27 11 997 6000

Southeast Asia IAF
Email: IAF.SEA@donaldson.com
Phone: (65) 63117373