

118 mm By-Pass Filter Assembly

Max Flow Rate

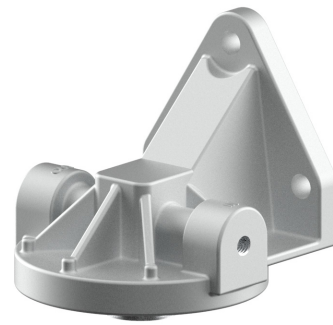
6.62 lpm / 1.75 gpm @ 85 psi

Operating Pressure

1034 kPa / 150 psi

Oil Compatibility

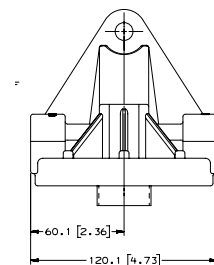
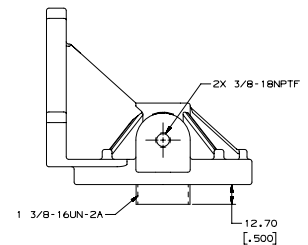
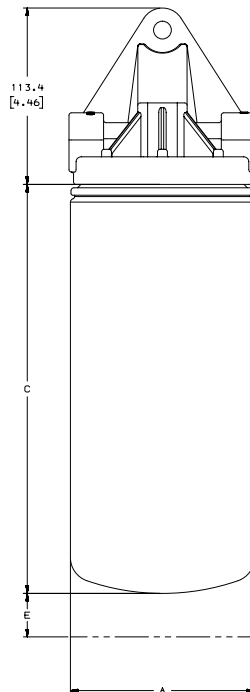
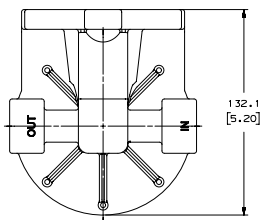
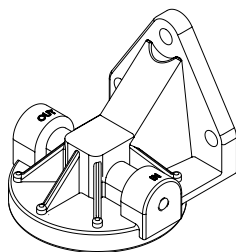
Compatible with petroleum based fluids (hydrocarbon)



Head
3/8" -18 NPTF Ports
PART NO. P174777



Specification Illustrations

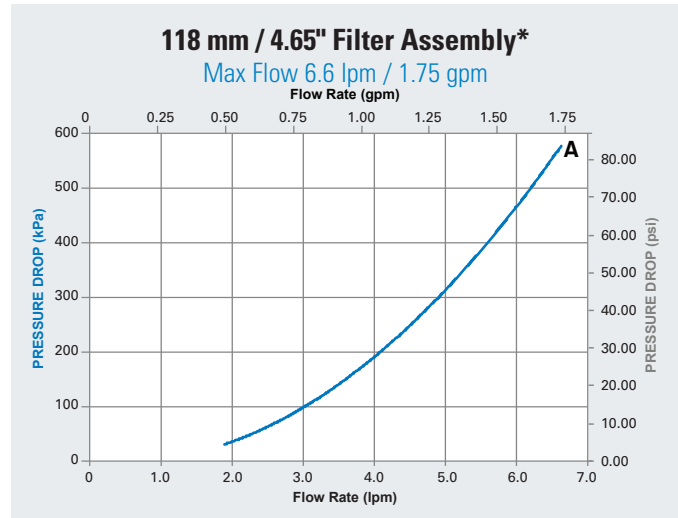
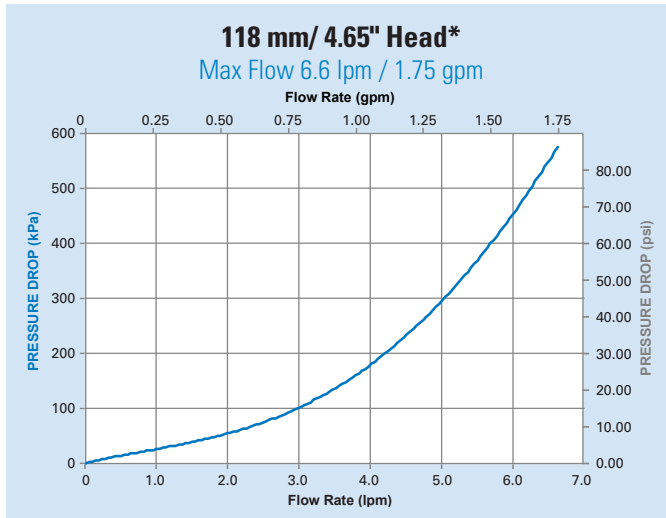




Filter Selection Chart

Maximum Recommended Flow Rate		(C) Filter Length		Media Type	Efficiency @ 99% per ISO 4548-12	Part Number	Performance Curve
lpm	gpm	mm	in				
6.6	1.75	260	10.24	Cellulose	23 µm	P550777	A

Performance Curves



*These performance curves represent clean filter by-pass flow as a function of system pressure.