



# Full-Flow Lube Filtration

Filter Dia. 118 MM (4.65") X 1 1/2"-12



**Flow Range: up to 45 gpm / 170 lpm**

**Operating Pressure**

Up to 150 psi (1034 kPa)

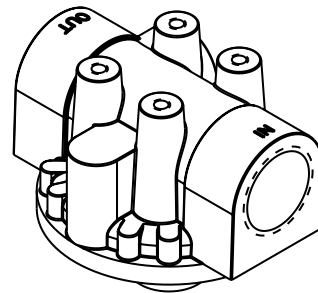
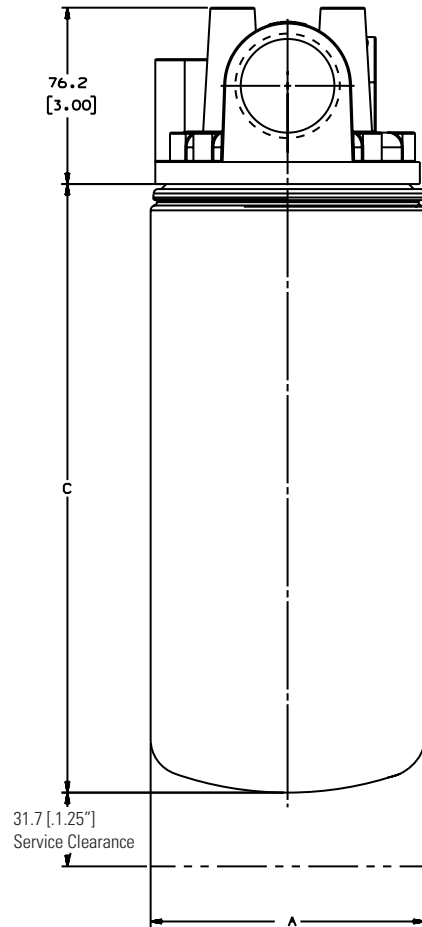
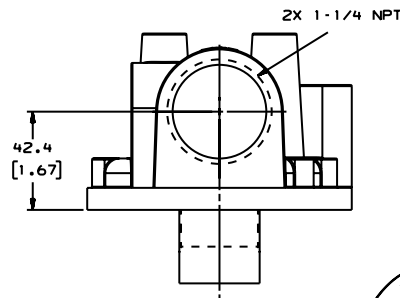
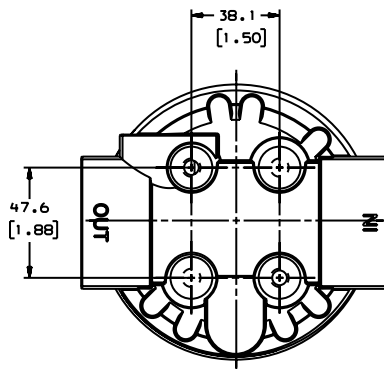
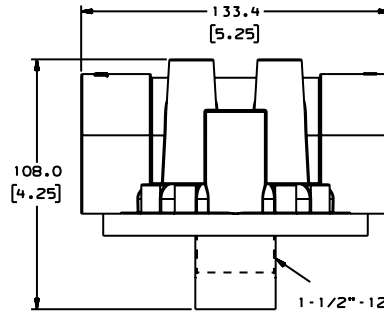
**Flow Rate**

Up to 45 gpm / 170 lpm

**Oil Compatibility**

Compatible with petroleum based fluids (hydrocarbon) and up to 20% biodiesel

Head Part No.  
**P174780**



### Filter Selection Chart

Max. Recommended Flow Rate		Outer Diameter		(C) Filter Length		Media Type	Efficiency @ Micron	Part Number	Performance Curve	Gasket Outer Diameter		Gasket Inner Diameter	
gph	lph	in	mm	in	mm					in	mm	in	mm
25	95	4.65	118	6.22	158	Cellulose	99% @ 23	<b>P550947</b>	A	4.32	110	3.85	98
						Synteq	99% @ 16	<b>DBL7947</b>	B	4.31	109	3.84	98
30	114			7.83	199	Cellulose	99% @ 40	<b>P551381</b>	C	4.32	110	3.85	98
35	132			8.94	227	Cellulose	99% @ 23	<b>P550671</b>	D	4.32	110	3.85	98
45	170			10.24	260	Synteq	99% @ 16	<b>DBL7670</b>	E	4.31	109	3.84	98
				Cellulose	99% @ 23	<b>P551670</b>	E	4.32	110	3.85	98		

### Performance Curves

