

## HPK03 In-Line Cartridge Filters

### Working Pressures to:

3000 psi / 20,700 kPa / 206.9 bar

### Rated Static Burst to:

6000 psi / 41,400 kPa / 413.8 bar

### Flow Range To:

60 gpm / 227 lpm

### Applications

- High Pressure Circuits
- In-Plant Systems
- Meets HF3 Specification
- Mobile Equipment
- Servo Valve Circuits

### Features

The sturdy HPK03 filter is constructed of ductile iron for durability in high pressure applications. Standard housing drain plug means simplified servicing. Housing includes a fluoroelastomer head-to-housing seal. Meets HF3 specification.

Take advantage of our mix and match system of in-stock heads and cartridges—so you can get exactly what you need. HPK03 is available with your choice of visual or AC/DC electrical indicators. Likewise, choose the bypass option that's right for your application—50 psi (3.5 bar) or no bypass. Seals made of fluorocarbon or nitrile are available with HPK03.

All HPK03 filters contain Synteq<sup>®</sup>, our synthetic filter media designed especially for hydraulic filtration. Upgraded Donaldson DT filters are also offered for superior performance.



### Beta Rating

- Performance to  $\beta_{<4(\mu)}=1000$

### Porting Size Options

- SAE-12, SAE-16 O-Ring

### Replacement Filter Lengths

- 8.22" / 208.8mm

### Standard Bypass Ratings

- 50 psi / 345 kPa / 3.5 bar
- No Bypass

### Assembly Weight

- 26 lbs / 11.8 kg

### Operating Temperatures

- -20°F to 250°F / -29°C to 121°C

### Filter Collapse Ratings

- 200 psi / 1380 kPa / 13.8 bar (standard)
- 3000 psi / 20,700 kPa / 206.9 bar (high collapse)



HPK03

Max Flow: 60 gpm (227 lpm)

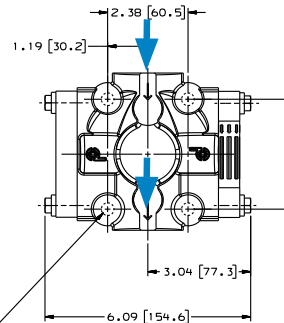
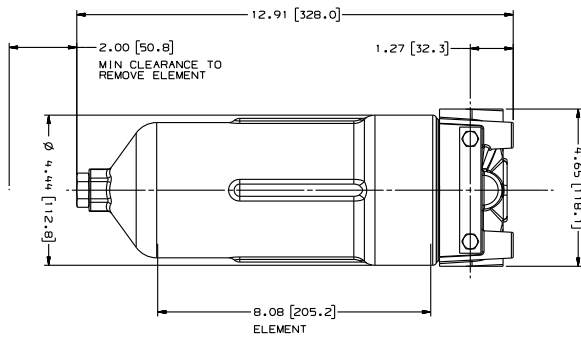


## HPK03 Specification Illustrations

### ASSEMBLY - SIDE VIEW

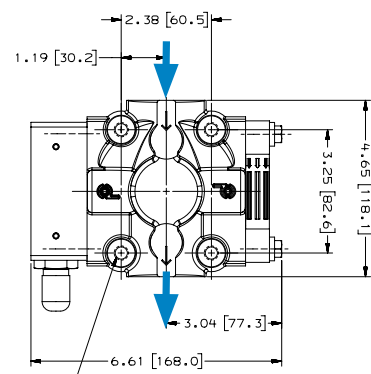
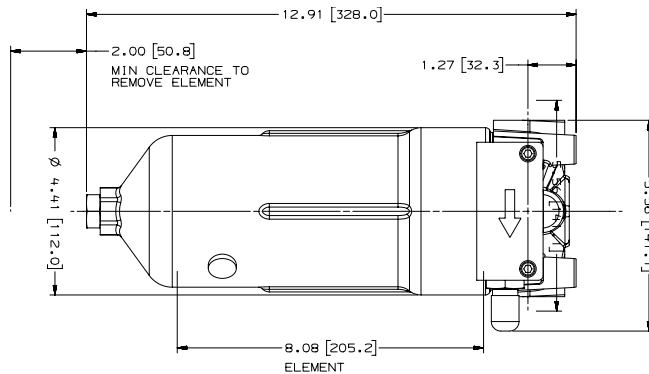
### HEAD - TOP VIEW

All dimensions are shown in inches [millimeters].



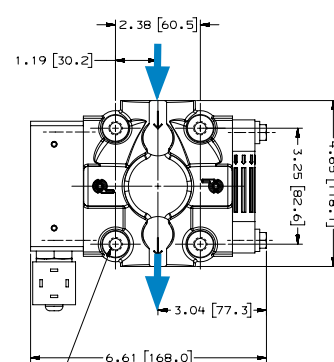
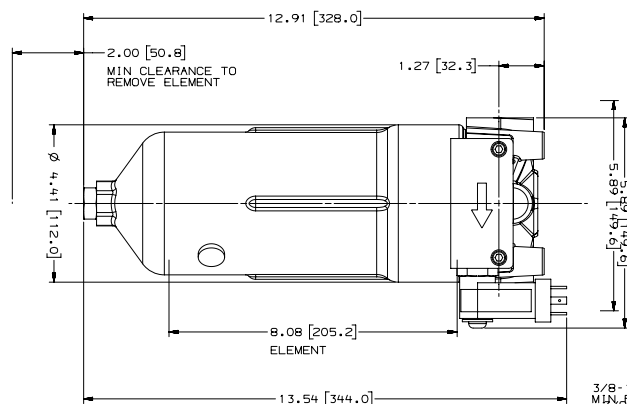
3/8-16 UNC-2B x .69 [17.5]  
MIN FULL THD 4 PLACES

### HPK03 with Visual Service Indicator



3/8-16 UNC-2B x .69 [17.5]  
MIN FULL THD 4 PLACES

### HPK03 with AC/DC Electrical Service Indicator



3/8-16 UNC-2B x .69 [17.5]  
MIN FULL THD 4 PLACES

## HPK03 Components

### Filter Choices

Media Type	$\beta_{x(c)} = 1000$	$\beta_{x(c)} = 2$	Length		Part No.	Comments
	Rating based on ISO 16889		in	mm		
DT Synthetic	<4 $\mu\text{m}$		8.22	209	P566209	DT-9600-8-2UM
	5 $\mu\text{m}$		8.22	209	P566210	DT-9600-8-5UM
	5 $\mu\text{m}$		8.22	209	P167185	DT-9601-8-5UM, High Collapse
	8 $\mu\text{m}$		8.22	209	P566211	DT-9600-8-8UM
	12 $\mu\text{m}$		8.22	209	P566212	DT-9600-8-14UM
	12 $\mu\text{m}$		8.22	209	P167186	DT-9601-8-14UM, High Collapse
	23 $\mu\text{m}$		8.22	209	P566213	DT-9600-8-25UM
Water Absorbing		10 $\mu\text{m}$	8.22	209	P569528	
Wire Mesh		75 $\mu\text{m}$	8.22	209	P162233	

Filter Notes: All Donaldson DT filters utilize glass fiber media with an acrylic-based resin system for the ultimate in chemical compatibility. All Donaldson DT filters are potted with acrylic-based adhesives. Standard collapse DT designs are double wire-backed using acrylic-coated steel mesh for maximum pleat support and dirt capacity. Fluorocarbon seals are standard on all Donaldson DT filters. Refer to the table in the Technical Reference Guide for fluid compatibility with our filter media. If filtering diester, phosphate ester fluids, water glycol, water/oil emulsions, or HWCF over 150°F/83°C, use filters with seals made of fluorocarbon. Donaldson "high collapse" filters, with their steel end caps and wire-backed media, are rated to withstand up to 3000 psi/ 20,700 kPa before collapsing. High collapse designs are also potted into machined aluminum endcaps for greater filter integrity in critical applications. The fluorocarbon seal/high collapse filters also use acrylic potting and media seam seals for added chemical compatibility.



### Housing Choices

Length	Part No.
8.22" (208.8mm) filter	P179579

The **P179579** housing is 10.73 inches (273mm) long and accepts the filter that is 8.22 inches (208.8mm) long. It includes a head-to-housing seal.

### Head Choices

Port Size	Bypass Rating	Indicators <sup>1</sup>	Part No.
SAE-16 O-Ring	50 psi / 3.5 bar	Visual indicator, left side	P166353
SAE-12 O-Ring	50 psi / 3.5 bar	Visual indicator, left side	P170489
SAE-12 O-Ring	No bypass	Visual indicator, left side	P170491

Notes

<sup>1</sup>Donaldson uses the inlet port as the reference point. "Left side," for instance, means that the indicator mounts on the side of the filter head that is on your left when you face the inlet port.



HPK03

Max Flow: 60 gpm (227 lpm)



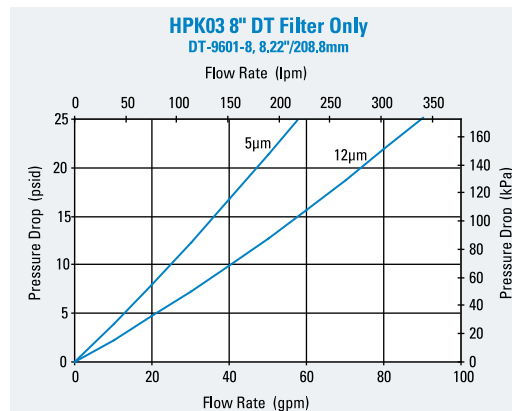
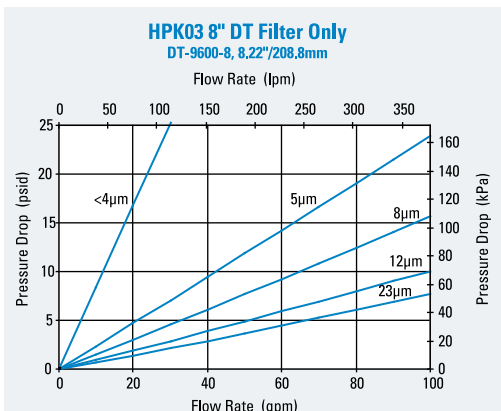
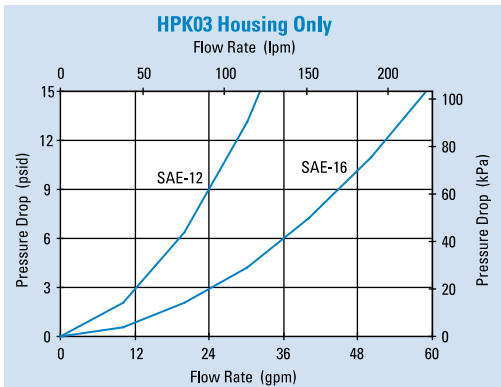
## Service Indicator Kits (All kits include indicator with mounting block)

Part No.	Bypass Valve Pressure of:	Description
<b>Visual Service Indicators</b>		
P569632	50 psi / 3.5 bar	35 psi/2.4 bar indicator kit auto reset pop-out button
P569633	90 psi / 6.2 bar	70 psi/4.8 bar indicator kit auto reset pop-out button
P567988	50 psi / 3.5 bar	35 psi/2.4 bar indicator kit auto reset pop-out button with thermal lockout and surge control
P567989	90 psi / 6.2 bar	70 psi/4.8 bar indicator kit* auto reset pop-out button with thermal lockout and surge control
<b>AC/DC Visual/Electrical Service Indicators</b>		
P569634	50 psi / 3.5 bar	35 psi/2.4 bar indicator kit Hirschmann receptacle 115 VAC/28 VDC, 2 amps
P569635	90 psi / 6.2 bar	70 psi/4.8 bar indicator kit Hirschmann receptacle 115 VAC/28 VDC, 2 amps
P567986	50 psi / 3.5 bar	35 psi/2.4 bar indicator kit with thermal lockout and surge control, Hirschmann receptacle, 115 VAC/28 VDC, 2 amps, 4 pin DIN 43650
P567987	90 psi / 6.2 bar	70 psi/4.8 bar indicator kit with thermal lockout and surge control, Hirschmann receptacle, 115 VAC/28 VDC, 2 amps, 4 pin DIN 43650

## Indicator Choices

Part No.	Description	Part No.	Description
<b>Replacement Indicator Only</b>			
P567458	Visual/Electrical indicator with thermal lockout and surge, 35 psid/2.4 bar	P569638	Visual/Electrical Indicator, 35 psid/2.4 bar
P567459	Visual/Electrical indicator, with thermal lockout and surge 70 psid/4.8 bar	P569639	Visual/Electrical Indicator, 70 psid/4.8 bar
P567456	Pop-Up Visual Indicator, with thermal lockout and surge 35 psid/2.4 bar	P164315	Visual Indicator, bar style, 35 psid/2.4 bar
P567457	Pop-Up Visual Indicator, with thermal lockout and surge 70 psid/4.8 bar	P166603	Visual Indicator, bar style, 70 psid/4.8 bar
P569636	Pop-Up Visual Indicator, 35 psid/2.4 bar	P166134	Blanking plate
P569637	Pop-Up Visual Indicator, 70 psid/4.8 bar		
<b>Indicator Mounting Block</b>			
P573495	Mounting Block Assembly		

## Performance Data



## HPK03 Service Parts

### SERVICE PARTS NOTE:

Some service parts may not be stocked. Please contact your Donaldson sales representative for lead time details.

