



## High Airflow in Compact Size for Horizontal Installation

### Upgrade Path

To upgrade, consider the Donaldson EPG air cleaner or PSD air cleaners that use newer filtration technologies.

### Applications

- Airflow range 775 to 1600 cfm airflow throughput per air cleaner
- Horizontal installation, side inlet
- Over-highway trucks: horizontal under hood or behind cab
- Buses: under hood

### Air Cleaner Features

- Relatively small air cleaner with high airflow
- Designed for horizontal installation with side inlet
- Housing is metal and coated with a corrosion and chemical resistant polymer paint
- Direct engine mounting is not recommended due to excessive engine vibration
- All models have service access cover opposite the outlet end of the air cleaner

### Filter Features

- Cone shaped filters, which we call Konepac, allow maximum media in a small package (one filter is shipped with each air cleaner)
- Other filter performance options, including Donaldson Blue® high efficiency, extended service filters, are available on some models (see service parts list on pages 86 and 87 for part numbers)



The latched service cover on the ECG Konepac allows for easy access to the filter for change out.



ECG Konepac with Latched Service Access  
**Left:** a standard media filter, which is available with either standard or carbon-resistant media. **Middle:** the ECG Konepac™ metal air cleaner housing. **Right:** an extended service filter



ECG Konepac with Perforated Inlet — an alternative to disposable style housings. You'll get the economy of replacing the filter instead of the entire unit each time. The perforated inlet on the side of this G112417 housing (middle) is the same as the disposable's, so conversion is direct and easy. **Left:** Extended service filter. **Right:** Filter designed for scheduled maintenance.





**Air in the Side, Out the End** (standard flow filters)

**When Selecting an Air Cleaner**

Service parts for this axial style air cleaner may not be available due to newer filtration technology and housing designs. Donaldson now recommends one of two other families — the EPG or PCD.

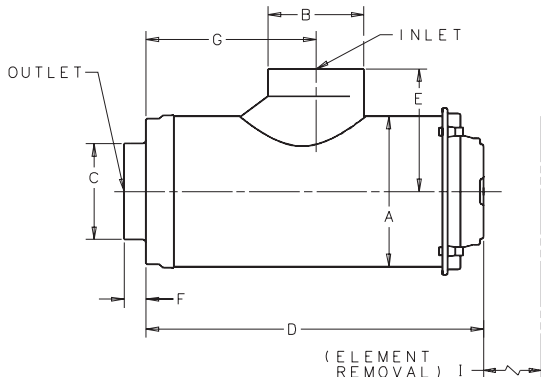
**Initial Airflow Restriction\***

CFM @ "H <sub>2</sub> O			Air Cleaner Model
6"	8"	10"	
<b>MODELS WITH BOLTED SERVICE ACCESS</b>			
775	880	1000	G092001
1100	1300	1425	G112001
1200	1400	1550	G132000
<b>MODELS WITH LATCHED SERVICE ACCESS</b>			
800	925	1040	G092401
1200	1400	1600	G112404
1200	1400	1600	G112417 <sup>1</sup>
1200	1400	1600	G112501
1200	1400	1600	G112504

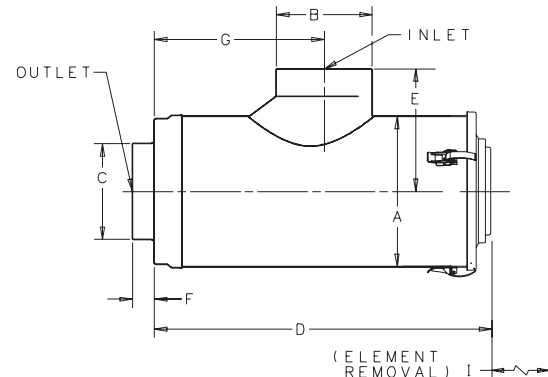
\*Results generated using laboratory testing pursuant to ISO5011. Actual performance during use may vary depending on multiple factors, including specific product configuration, external conditions and application.

1 - No inlet tube, perforated inlet holes on side

**ECG Konepac™ Specification Illustrations**  
Bolted Service Access



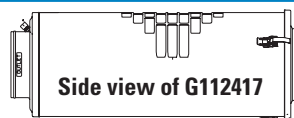
Latched Service Access



**ECG Konepac Specifications**

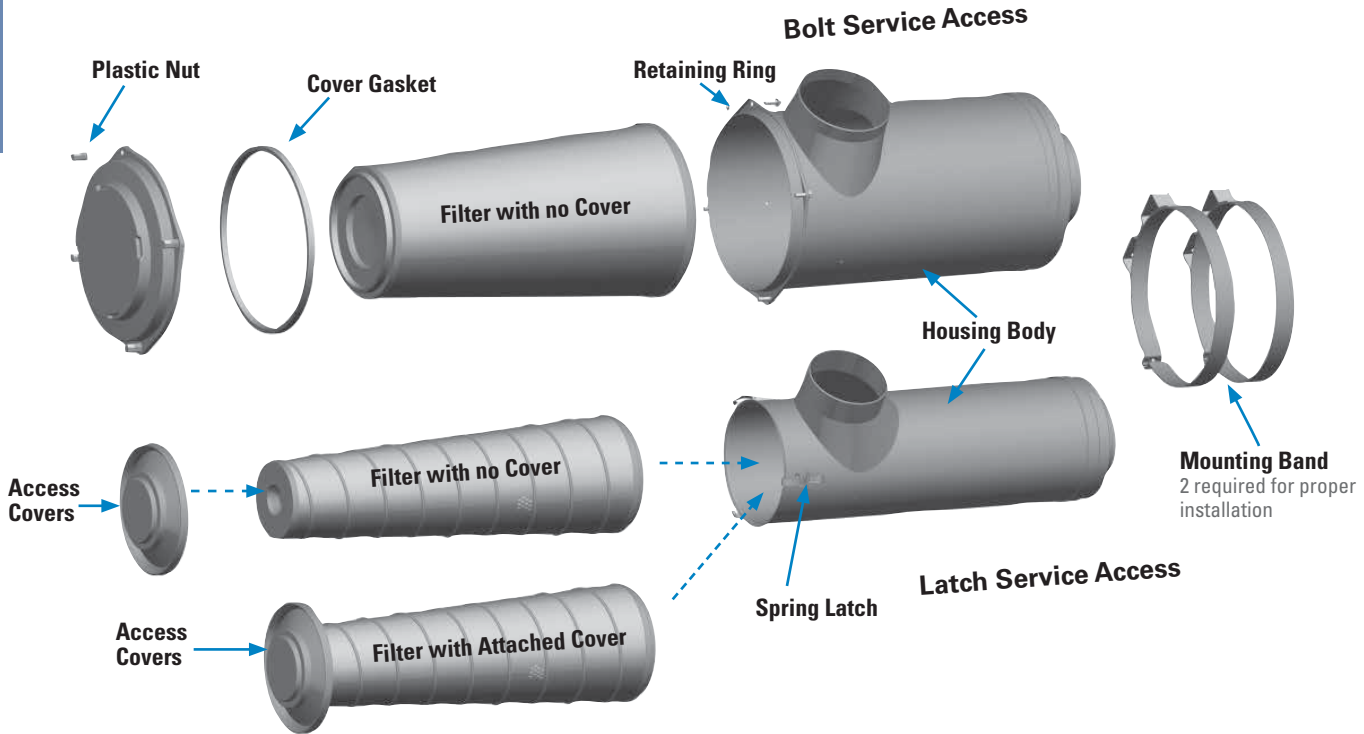
Air Cleaner Models	Body Diameter (A)		Inlet Diameter (B)		Outlet Diameter (C)		Overall Length (D)			Inlet Length (E)		Inlet Length (F)		Service Clearance (G)		Service Indicator Tap	Weight		
	in	mm	in	mm	in	mm	in	mm	in	mm	in	mm	in	mm	lbs		kg		
<b>BOLTED SERVICE ACCESS</b>																			
G092001	9.00	229	6.00	152	6.00	152	28.63	727	7.85	199	1.18	30	18.63	473	27.62	702	No	30	14
G112001	11.00	279	7.00	178	7.00	178	28.62	727	8.95	227	1.58	40	20.62	524	27.00	686	No	38	17
G132000	13.00	330	7.00	178	7.00	178	24.59	625	9.54	242	2.38	60	18.25	464	27.62	702	No	36	16
<b>LATCHED SERVICE ACCESS</b>																			
G092401	9.00	229	6.00	152	6.00	152	28.70	729	7.86	200	1.18	30	21.75	553	27.62	702	No	30	14
G112404	11.00	279	7.00	178	7.00	178	22.70	577	8.97	228	2.00	51	12.32	313	22.00	559	Yes	33	15
G112417 <sup>1</sup>	11.00	279	--	--	7.00	178	28.70	729	--	--	2.00	51	15.11	384	28.00	711	Yes	30	14
G112501	11.00	279	7.00	178	7.00	178	28.30	719	8.97	228	2.00	51	21.22	539	28.00	711	Yes	23	10
G112504	11.00	279	7.00	178	7.00	178	22.30	566	8.97	228	2.00	51	12.32	313	22.00	559	Yes	20	9

1 - This model has no inlet tube; inlet consists of rectangular perforated holes on side of housing.





## ECG Konepac Service Parts



## ECG Konepac Service Parts & Accessories

### G092001 Bolted Service Cover

Elbow, 45° .....	P105547
Elbow, 90° .....	P105535
Filter, primary, no cover, treated... ..	P148044 ....1,3
Hump hose .....	P105612
Informer™ indicator 25" H <sub>2</sub> O .....	X002277
Inlet hood, metal.....	H000275
Inlet hood, plastic.....	H000606
Mounting band, metal .....	P004073 ....2
Nut, plastic .....	P119325
Outlet band clamp.....	P148347
Retaining ring.....	P129469

### G092401 Latch Service Cover

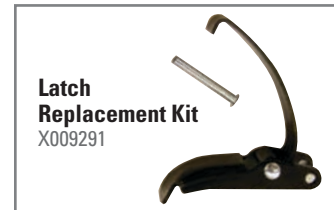
Elbow, 45° .....	P105547
Elbow, 90° .....	P105535
Filter, primary, attached cover.....	P150693 ....6
Filter, primary, no cover.....	P150692 ....3
Filter, primary, no cover, treated... ..	P148044 ....1
Hump hose .....	P105612
Informer™ indicator 25" H <sub>2</sub> O .....	X002277
Inlet hood, metal.....	H000275
Inlet hood, plastic.....	H000606
Mounting bands, metal .....	P004073
Outlet band clamp.....	P148347
Spring latch replacement kit.....	X006201

### G112001 Bolt Service Cover

Elbow, 45° .....	P105548
Elbow, 90° .....	P105536
Filter, primary, no cover, treated... ..	P148043 ....1,3
Gasket, cover.....	P155211
Hump hose .....	P105613
Informer™ indicator 25" H <sub>2</sub> O .....	X002277
Inlet hood, metal.....	H000339
Inlet hood, plastic.....	H000607
Kit.....	X006201
Mounting band, metal .....	P004079 ....2
Nut, plastic .....	P119325
Outlet band clamp.....	P148348
Retaining ring.....	P129469

### G112404 Latch Service Cover

Cover .....	P150862
Elbow, 45° .....	P105548
Elbow, 90° .....	P105536
Filter, primary, attached cover .....	P153551
Filter, primary, no cover, treated... ..	P154575 ....1,3
Gasket, cover.....	P536493
Hump hose .....	P105613
Informer™ indicator 25" H <sub>2</sub> O .....	X002277
Inlet hood, metal.....	H000339
Inlet hood, plastic.....	H000607
Mounting bands, metal .....	P004079
Outlet band clamp.....	P148348
Spring latch replacement kit.....	X006201



ECG style air cleaners have three cover latches that need to perform correctly to ensure the filter gasket is sealing properly. These latches should be checked for tightness and wear. To check

for tightness, close all three latches, then open and close them one at a time. There should be good tension and they should snap tightly when closed. If any latches seem loose or rattle, they should be replaced.



## G112417 Latch Service Cover

Cover.....	P150862
Elbow, 45°.....	P105548
Elbow, 90°.....	P105536
Filter, primary, attached cover.....	P150695
<b>Filter, primary, attached cover</b>	
- Donaldson Blue®.....	DBA5047
Filter, primary, no cover.....	P150694.....3,5
<b>Filter, primary, no cover</b>	
- Donaldson Blue®.....	DBA5029
Gasket, cover.....	P536493
Hump hose.....	P105613
Informer™ indicator 25" H <sub>2</sub> O.....	X002277
Mounting bands, metal.....	P004079
Outlet band clamp.....	P148348
Spring latch replacement kit.....	X006201

## G112501 Latch Service Cover

Elbow, 45°.....	P105548
Elbow, 90°.....	P105536
Filter, primary.....	P150694.....5
Filter, primary.....	P150695.....3,6
<b>Filter, primary, attached cover</b>	
- Donaldson Blue®.....	DBA5047
<b>Filter, primary, no cover</b>	
- Donaldson Blue®.....	DBA5029
Filter, primary treated.....	P148043.....1
Gasket, cover.....	P536493
Hump hose.....	P105613
Informer™ indicator 25" H <sub>2</sub> O.....	X002277
Inlet hood, metal.....	H000339
Inlet hood, plastic.....	H000607
Mounting bands, metal.....	P004079
Outlet band clamp.....	P148348
Spring latch replacement kit.....	X006201

## G112504 Latch Service Cover

Elbow, 45°.....	P105548
Elbow, 90°.....	P105536
Filter, primary, attached cover.....	P153551.....6
<b>Filter, primary, attached cover</b>	
- Donaldson Blue®.....	DBA5053
Filter, primary, no cover, treated... ..	P154575.....1
Gasket, cover.....	P536493
Hump hose.....	P105613
Informer™ indicator 25" H <sub>2</sub> O.....	X002277
Inlet hood, metal.....	H000339
Inlet hood, plastic.....	H000607
Mounting bands, metal.....	P004079
Outlet band clamp.....	P148348
Spring latch replacement kit.....	X006201

## G132000 Bolt Service Cover

Elbow, 45°.....	P105548
Elbow, 90°.....	P105536
Filter, primary, no cover.....	P142100.....3
<b>Filter, primary, no cover</b>	
- Donaldson Blue®.....	DBA5027
Gasket, cover.....	P120604
Hump hose.....	P105613
Informer™ indicator 25" H <sub>2</sub> O.....	X002277
Inlet hood, metal.....	H000339
Inlet hood, plastic.....	H000607
Mounting band, metal.....	P013722.....2
Nut, plastic.....	P119325
Outlet band clamp.....	P148348
Retaining ring.....	P129469

### NOTES:

- 1 = Filter is treated with chemical for carbon resistance and is not cleanable
- 2 = Two required for proper installation
- 3 = Shipped with air cleaner initially
- 5 = Also requires access cover P150862
- 6 = Access cover is attached to filter

Donaldson Blue® = High Efficiency, Extended Service





This servicing information is provided as a best practices guide. It is not intended to replace or supersede the service instructions supplied by your engine or vehicle manufacturer.

### 1 Check the Restriction

Check the restriction of the air cleaner with a Donaldson filter service indicator, service gauge, or a water manometer.

Replace the filter only when the restriction level has reached the maximum recommended by the engine or equipment manufacturer or on a regular service schedule.



### 2 Gently Remove the Old Filter

Switch the engine off. Handle the dirty filter gently, until it is clear of the air cleaner housing. Accidental bumping will shake dirt loose inside the filter housing.



### 3 Clean the Inside of the Housing

Always clean the inside of the housing. Dirt left in the air cleaner housing can potentially damage your engine.

Use a clean, damp cloth to wipe every surface clean. Ensure that the outlet tube sealing area is clean and undamaged.



### 4 Visually Check the Inside Before Fitting the New Filter

Always clean the gasket sealing surface. An improper gasket seal is one of the most common causes of engine contamination. Make sure that all hardened dirt ridges are completely removed, both on the bottom and top of the air cleaner housing.

Check for uneven dirt patterns. Your old filter has valuable clues to dust leakage or gasket sealing problems. A pattern on the filter's clean side is a sign that the old filter was not firmly sealed or that a dust leak exists. Identify the cause of that leak and rectify it before installing a new filter.



## 5 Inspect the New Filter Before Installation

Check the new filter but don't install it if it appears damaged. Check that the gasket is easily compressible and springs back promptly when finger pressure is released.



## 6 Install the New Filter

It is important to change the new supplied cover gasket with each filter service. Ensure that the filter is the correct size for the housing and install the filter, making sure the gasket seats evenly for a perfect seal. Without a proper seal, dirty air can by-pass the filter.



## 7 Ensure Air-tight Fit on All Connections and Ducts

Check that all clamps and flange joints are tight, as well as the air cleaner mounting bands. Attend to any leaks immediately to avoid dirt entering your engine directly. If the vehicle is fitted with air brakes, it is important to check the clean air supply hose which feeds the air brake compressor.

