



**Donaldson**  
FILTRATION SOLUTIONS

## Clean Fuel and Lubricant Solutions **Inline 8 Filter Manifold**



**PREFERRED BY OE'S  
TRUSTED BY PROFESSIONALS**

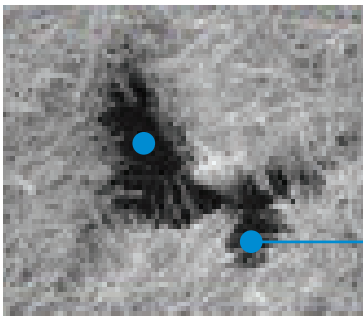
# Inline-8 Filter Manifold

## CLEAN FUEL AND LUBRICANT SOLUTIONS

Clean Solutions Filter Manifolds expand capacity and increase flow rate beyond the capability of a single or dual filter head. The product is designed to remove contaminant from bulk diesel and lubricant applications.

Using a unique Rectangular pipe design, the I-8 manifold is an especially compact inline filter system that offers exceptionally high flow rate and capacity with low resistance to flow.

Dividing the flow between multiple filters plumbed in parallel slows the flow rate per filter, reducing pressure drop and extending filter life.



Donaldson Blue bulk fluid filters are designed with advanced media technology and construction to handle all fuels and lubricants in any operating environment. Featuring Donaldson Electrostatic Reduction Technology (D.E.R.T.™) used in DBB8666 and DBB8777 fuel filters, protects the media from electrostatic discharge. The use of epoxy in construction enhances fluid compatibility.

## Features

- ▶ Fast, easy and safe to service
- ▶ Requires no electrical or air hook-ups
- ▶ Large capacity in small foot print
- ▶ Flexible mounting options (horizontal or vertical)
- ▶ Cost effective high flow filtration
- ▶ Incorporated drain plugs facilitate clean servicing
- ▶ Comes shipped in reusable trunk

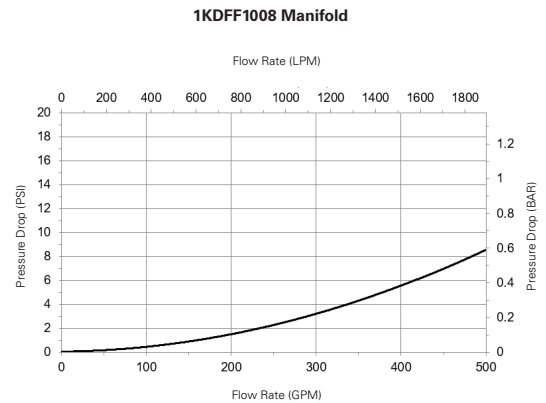
## Applications

- ▶ Bulk fluid applications
- ▶ High-flow transfer and dispensing
- ▶ Suitable for high viscosity oils
- ▶ Inline filtration of gear oils and lubricants
- ▶ Kidney loop applications
- ▶ Underground mining applications

Donaldson bulk filtration systems save on costly component replacement, prevent unplanned downtime and prevent a decrease in fuel efficiency due to injector wear. In short, Donaldson reduces your total cost of ownership.

## Specifications

|  |  |
|--|--|
| <b>Part Number</b>                           | 1KDFF1008  |
| <b>Filter Quantity*</b>                      | 8  |
| <b>Mounting Connection</b>                   | 4" ASA 150 Flanges   |
| <b>Max Flow Range **</b>                     | 450 gpm / 1700 lpm   |
| <b>Shipping Weight</b>                       | 106 lbs / 46 kg  |
| <b>Pressure Gauges (10 bar bottom entry)</b> | Includes up-stream and down- stream pressure gauges                            |
| <b>Fluid Compatibility</b>                   | All fuels and lubricants   |
| <b>Working Pressure</b>                      | 145 psi / 1000 kPa / 10 bar  |
| <b>Construction</b>                          | No External Aluminum   |
| <b>Compatible Filters</b>                    | DBB8664, DBB8665, DBB8666, DBB8777, DBB0248                                    |
| <b>Accessories (sold separately)</b>         | 1KDFF1005 Blanking Cap, P562709 Pressure Gauge, P563809 Pressure Gauge Adaptor |
| <b>Operating Temperature</b>                 | -40 to 245 °F / -40 to 120 °C  |



\* Filters sold separately

\*\* Actual flow rate varies based on fluid viscosity, pumping pressure and filter loading

| NEW PART NO.            | OLD PART NO. | TYPICAL FLUID APPLICATIONS              | TARGET ISO CLEANLINESS | ISO FILTER EFFICIENCY |
|-------------------------|--------------|---|------------------------|-----------------------|
| <a href="#">DBB8664</a> | P568664      | Engine and Gear Oil                     | 18/16/13               | 25 micron @ Beta 2000 |
| <a href="#">DBB8665</a> | P568665      | Transmission and Hydraulic Oil          | 16/14/11               | 7 micron @ Beta 2000  |
| <a href="#">DBB8666</a> | P568666      | All Fuels (D.E.R.T)                     | 14/13/11               | 4 micron @ Beta 2000  |
| <a href="#">DBB8777</a> | P575483      | All Fuels (D.E.R.T)                     | 16/14/11               | 7 micron @ Beta 2000  |
| <a href="#">DBB0248</a> | P570248      | Water Absorbing for Ethanol-Free Fluids | Not Applicable         | Not Applicable        |

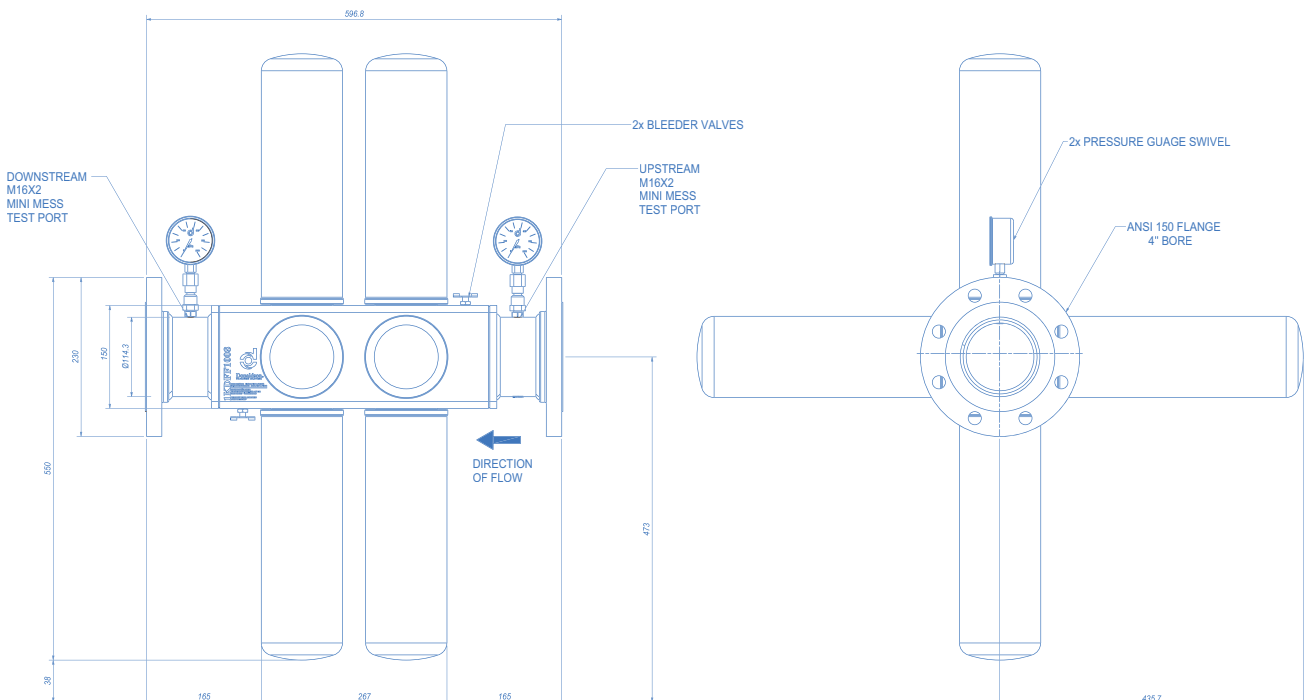
[SHOP NOW](#)

The combination of Clean Solutions manifolds and filters ensures that your equipment receives the cleanest possible fuel and oil.

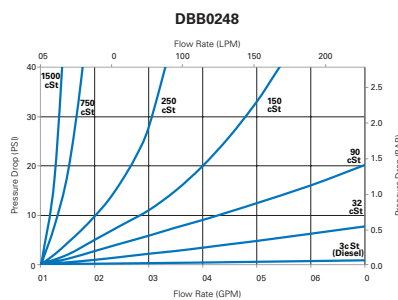
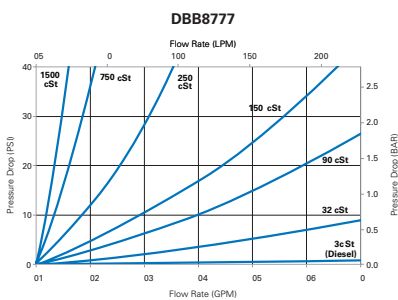
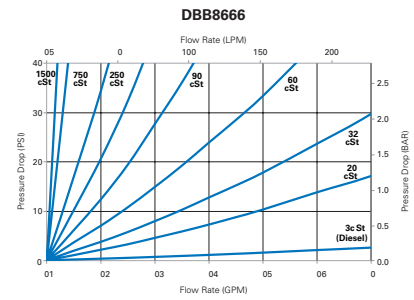
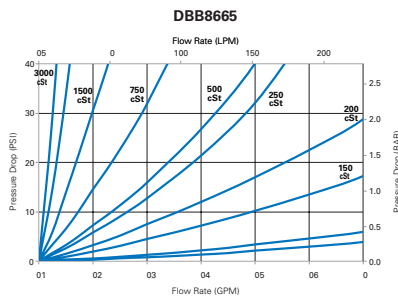
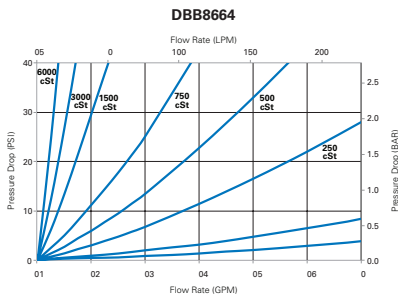
# Installation

- ▶ Up to 4 filter orifices may be blocked off using blanking plates to enable flush configuration (sold separately)
- ▶ Install per local codes and regulations
- ▶ Install on pressure side of pump with arrows pointing in direction of flow
- ▶ Horizontal or vertical mounting configuration
- ▶ Allow 23.14" / 588 mm clearance from the top of the flange
- ▶ Mount assembly on each 4" ASA 150 flanges with 8 x nuts, bolts and washers along with 4" gasket on sealing face
- ▶ All nuts and bolts securing flanges to existing pipework are correctly fastened
- ▶ Ensure o-rings are present on the threaded spigots
- ▶ Install new filters on heads by spinning clockwise, tighten 1/2 turn after filter seats in gasket
- ▶ Filter blanking plates with part no. 1KDFF1005 to be installed on any unused spigots prior to operation
- ▶ Ensure all drain valves and plugs are securely fastened and closed shut
- ▶ At start up bleed the system for elimination of trapped air. Anticlockwise to open the bleed valve and the valve will move downward. Clockwise to close the valve and valve will move upward
- ▶ Can be used with the filter elements stated below with the following specifications:  
Working Pressure = 145 psi / 1000 kPa / 10 bar  
Maximum Flow-rate = 450 lpm

# Dimensions



# Replacement Filter Flow Rates and Pressure Drops



## Replacement Parts and Service

- ▶ Service filter when flow slows or a differential pressure of 50psi / 3.4Bar is reached
- ▶ Isolate manifold ensuring all isolating valves are closed prior to filter removal
- ▶ Relieve pressure and drain fluid from the system utilising the bleed valve prior to removing old filters
- ▶ Ensure proper containment for servicing filters (drip pan or other)
- ▶ Turn filters anti-clockwise to remove from manifold
- ▶ When servicing, replace all filters with

identical replacement filters

- ▶ Install new filters on heads by spinning clockwise and tighten 1/2 turn after filter seats in gasket
- ▶ Open the isolating valves
- ▶ Bleed system to eliminate trapped air
- ▶ Dispose of used filters appropriately



**Donaldson Australasia Pty Ltd**

PO Box 153, Wyong NSW 2259

Ph: +61 2 4350 2000

Fax: +61 2 4351 2036

**Donaldson New Zealand**

Ph: +64 9 579 2790

Fax: +64 9 579 0322

[www.donaldson.com](http://www.donaldson.com)

**Brochure No. F116010 (03/25)**

© 2025 Donaldson Company, Inc. All rights reserved. Donaldson Company, Inc. reserves the right to change or discontinue any model or specification at any time and without notice. Printed in Australia.