

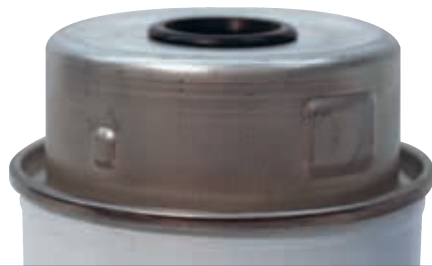


Donaldson Delivers

Replacement Filters for Stanadyne® Fuel Manager® FM100 Fuel Systems

Simplify your Filters. Complete Coverage with Fewer Parts.

Out with the old, in with the new. Donaldson filters for Stanadyne® Fuel Manager® FM100 fuel systems provide complete coverage with fewer part numbers. Buy one Donaldson replacement filter to fit multiple off-road applications. Our filters will accommodate your existing OEM drain valves, WIF sensors and bowls.



Out with the Old



In with the New!

Keys have been removed for a universal fit

BENEFITS

- Save shelf space – consolidate part numbers stocked with complete application coverage.
- A single part number can fit up to 20 different applications, including both the current and previous fuel system designs.
- 17 part numbers are available to cover over 500 vehicle applications.

FEATURES

- Versatile – no keys necessary for installation; universal interface allows one part to fit multiple applications. Requires use of OEM retaining ring.
- Integrated hose barb – allows attaching a hose to drain water to a container.
- Fully compatible with OEM accessories such as water collection bowls, drain valves and water-in-fuel (WIF) sensors.

APPLICATIONS

- Stanadyne Fuel Manager FM100 Fuel Systems used in popular off-road applications.



Donaldson filters will accommodate your existing OEM drain valves, WIF sensors and bowls.

CROSS REFERENCE

**Competitor
Part No.**

**Donaldson
Part No.**

Baldwin

BF1202.....	P551424
BF1237.....	P551424
BF1238.....	P551427
BF7665.....	P551423
BF7672D.....	P551427
BF7673.....	P551423
BF7673D.....	P551423
BF7674.....	P551424
BF7674D.....	P551424
BF7677D.....	P551425
BF7679.....	P551430
BF7679D.....	P551430
BF7681.....	P551429
BF7681D.....	P551429
BF7682.....	P551431
BF7682D.....	P551431
BF7699D.....	P551436
BF7746D.....	P551433
BF7783D.....	P551426
BF7784D.....	P551434
BF7785D.....	P551435
BF7786D.....	P551422
BF7787D.....	P551434
BF7898D.....	P551425
BF7905D.....	P551424
BF7906D.....	P551432
BF7949D.....	P551422
BF7950D.....	P551435
BF7951D.....	P551425
BF7952D.....	P551424
BF7953D.....	P551425
BF7954D.....	P551434
BF7956D.....	P551426
BF7971D.....	P551435
BF7971DM.....	P551435
BF7989D.....	P551431
BF9828D.....	P551434
BF9830D.....	P551426
BF9833D.....	P551427
BF9839D.....	P551434
BF9847D.....	P551432
BF9891D.....	P551433
D7682D.....	P551430

Fleetguard

FF19517.....	P551424
FF19987.....	P551434
FF19993.....	P551435
FS1069.....	P551426
FS19514.....	P551429
FS19515.....	P551424
FS19516.....	P551423
FS19517.....	P551424
FS19525.....	P551425
FS19526.....	P551430
FS1953.....	P551429
FS19530.....	P551429
FS19531.....	P551424
FS19546.....	P551431

**Competitor
Part No.**

**Donaldson
Part No.**

Fleetguard

FS19554.....	P551427
FS19555.....	P551430
FS19572.....	P551424
FS19573.....	P551423
FS19577.....	P551430
FS19583.....	P551424
FS19585.....	P551426
FS19588.....	P551437
FS19589.....	P551427
FS19609.....	P551432
FS19612.....	P551436
FS19614.....	P551433
FS19619.....	P551425
FS19621.....	P551423
FS19793.....	P551425
FS19794.....	P551430
FS19810.....	P551431
FS19811.....	P551429
FS19812.....	P551428
FS19813.....	P551436
FS19814.....	P551430
FS19826.....	P551434
FS19827.....	P551425
FS19829.....	P551421
FS19830.....	P551434
FS19831.....	P551423
FS19832.....	P551424
FS19833.....	P551422
FS19835.....	P551428
FS19836.....	P551426
FS19837.....	P551433
FS19838.....	P551423
FS19839.....	P551427
FS19840.....	P551424
FS19858.....	P551430
FS19860.....	P551423
FS19861.....	P551424
FS19864.....	P551433
FS19865.....	P551422
FS19868.....	P551421
FS19906.....	P551435
FS19917.....	P551432
FS19971.....	P551425
FS19972.....	P551434
FS19973.....	P551434
FS19974.....	P551425
FS19975.....	P551435
FS19976.....	P551422
FS19977.....	P551434
FS19979.....	P551427
FS19981.....	P551433
FS19982.....	P551425
FS19983.....	P551424
FS19984.....	P551434
FS19986.....	P551435
FS19987.....	P551434
FS19988.....	P551435
FS19989.....	P551432
FS19990.....	P551421

**Competitor
Part No.**

**Donaldson
Part No.**

Fleetguard

FS19991.....	P551432
FS19992.....	P551425
FS19993.....	P551435
FS20049.....	P551433
FS20050.....	P551432
FSS19976.....	P551422

Fram

P10810.....	P551435
P10962.....	P551432
P550856.....	P551422
P7412.....	P551424
PS10810.....	P551435
PS10884.....	P551422
PS10961.....	P551435
PS7407.....	P551423
PS7407A.....	P551423
PS7408.....	P551424
PS7408A.....	P551424
PS7409.....	P551427
PS7409A.....	P551427
PS7411.....	P551429
PS7412.....	P551424
PS8239.....	P551425
PS8322.....	P551430
PS8487.....	P551430
PS8533.....	P551427
PS8605FP.....	P551428
PS8622.....	P551424
PS9039.....	P551433
PS9127.....	P551429
PS9268.....	P551424

Hengst

H277WK.....	P551425
H290WK.....	P551432
H300WK.....	P551422
H301WK.....	P551435
H302WK.....	P551431

Luber-finer

L22023F.....	P551436
L3101F.....	P551429
L3102F.....	P551424
L3103F.....	P551433
L3441F.....	P551425
L3444F.....	P551434
L3880F.....	P551425
L3887F.....	P551424
L3891F.....	P551434
L3919F.....	P551426
L3920F.....	P551424
L3921F.....	P551426
L3924F.....	P551426
L4109F.....	P551434
L4401F.....	P551424
L6265F.....	P551432

COMPLETE COVERAGE, FEWER PARTS TO STOCK

**Competitor
Part No.**

**Donaldson
Part No.**

Luber-finer

L6267F.....	P551432
L6268F.....	P551433
L8138F.....	P551431
L8141F.....	P551424
L8242F.....	P551430
L8254F.....	P551425
L8512F.....	P551435
L8557F.....	P551421
L8679F.....	P551429
L8680F.....	P551425
L8681F.....	P551427
L8682F.....	P551430
L8683F.....	P551423
L8684F.....	P551424
L8706F.....	P551423
L8721F.....	P551424
L8867F.....	P551435
L8868F.....	P551422
L8872F.....	P551435
LF8215.....	P551423
LP5753.....	P551435
MFE1006AK.....	P551424

Mann + Hummel

WK8014.....	P551431
WK8100.....	P551423
WK8102.....	P551424
WK8107.....	P551424
WK8108.....	P551427
WK8109.....	P551430
WK8110.....	P551427
WK8111.....	P551436
WK8113.....	P551426
WK8114.....	P551425
WK8117.....	P551431
WK8118.....	P551423
WK8119.....	P551425
WK8120.....	P551425
WK8121.....	P551424
WK8122.....	P551426
WK8123.....	P551433
WK8124.....	P551425
WK8126.....	P551423
WK8127.....	P551426
WK8128.....	P551429
WK8129.....	P551429
WK8130.....	P551437
WK8131.....	P551424
WK8132.....	P551433
WK8136.....	P551434
WK8137.....	P551434
WK8138.....	P551427
WK8139.....	P551425
WK8140.....	P551430
WK8141.....	P551429
WK8142.....	P551426
WK8143.....	P551426
WK8146.....	P551428

**Competitor
Part No.**

**Donaldson
Part No.**

Mann + Hummel

WK8147.....	P551425
WK8148.....	P551433
WK8150.....	P551434
WK8151.....	P551435
WK8152.....	P551425
WK8153.....	P551434
WK8155.....	P551434
WK8156.....	P551434
WK8160.....	P551425
WK8161.....	P551435
WK8162.....	P551422
WK8163.....	P551425
WK8164.....	P551425
WK8165.....	P551434
WK8169.....	P551434
WK8170.....	P551433
WK8172.....	P551425
WK8184.....	P551433
WK8189.....	P551432
WK8192.....	P551432
WK8193.....	P551425
WK8194.....	P551424

Napa

3132.....	P551425
3345.....	P551435
3531.....	P551423
3532.....	P551424
3533.....	P551430
3534.....	P551424
3535.....	P551429
3536.....	P551431
3537.....	P551424
3546.....	P551424
3547.....	P551429
3548.....	P551423
3586.....	P551425
3609.....	P551433
3632.....	P551430
3633.....	P551425
3636.....	P551430
3637.....	P551426
3638.....	P551427
3648.....	P551422
3649.....	P551427
3658.....	P551425
3668.....	P551421
3680.....	P551434
3681.....	P551433
3684.....	P551434
3694.....	P551426
3738.....	P551435
3739.....	P551424
3747.....	P551434
3748.....	P551436
3754.....	P551432
3756.....	P551425
3759.....	P551423

**Competitor
Part No.**

**Donaldson
Part No.**

Napa

3767.....	P551435
3808.....	P551425
3842.....	P551421
3977.....	P551435
3978.....	P551422
3988.....	P551434
600035.....	P551432
600053.....	P551432

Stanadyne

29571.....	P551423
30221.....	P551424
30226.....	P551429
30233.....	P551424
30422.....	P551427
30727.....	P551429
30729.....	P551424
31300.....	P551430
31302.....	P551425
31385.....	P551424
31387.....	P551427
31391.....	P551430
31518.....	P551430
31616.....	P551424
31617.....	P551430
31649.....	P551430
31732.....	P551423
31733.....	P551424
31734.....	P551427
31738.....	P551430
31863.....	P551426
31865.....	P551427
31867.....	P551428
31873.....	P551424
31877.....	P551425
32243.....	P551428
32302.....	P551423
32306.....	P551423
32311.....	P551428
32341.....	P551431
32650.....	P551427
32806.....	P551423
32808.....	P551425
32916.....	P551424
32917.....	P551424
32918.....	P551429
32919.....	P551429
33168.....	P551423
33169.....	P551429
33317.....	P551425
33319.....	P551437
33748.....	P551436
33961.....	P551433
34470.....	P551433
34981.....	P551437
35005.....	P551422
35014.....	P551434
35270.....	P551437

CROSS REFERENCE

Competitor Part No.	Donaldson Part No.	Competitor Part No.	Donaldson Part No.	Competitor Part No.	Donaldson Part No.
---------------------	--------------------	---------------------	--------------------	---------------------	--------------------

Stanadyne

35332	P551433
35369	P551422
35370	P551421
35553	P551433
35632	P551434
35733	P551434
36241	P551433
36503	P551421
36551	P551435
36635	P551435
36661	P551434
36729	P551425
36730	P551434
36739	P551425
36810	P551427
37079	P551426
37180	P551425
37616	P551434
37932	P551427
38289	P551434
38332	P551425
38461	P551434
38738	P551425
38893	P551432
39851	P551432
43225	P551433
43411	P551422
30727DN	P551429
30729DN	P551424
31518B	P551430
31733DN	P551424
31734DN	P551427
I29571	P551423

Wix

33096	P551435
33132	P551425
33304	P551434
33345	P551435
33531	P551423
33532	P551424
33533	P551430
33534	P551424
33535	P551429
33536	P551431
33537	P551424
33546	P551424
33547	P551429
33548	P551423
33586	P551425
33609	P551433
33632	P551430
33633	P551425
33636	P551430
33637	P551426
33638	P551427
33648	P551422
33649	P551427
33658	P551425
33659	P551425
33668	P551421
33670	P551434
33680	P551434
33681	P551433
33684	P551434

Wix

33694	P551426
33738	P551435
33739	P551424
33747	P551434
33748	P551436
33754	P551432
33759	P551423
33760	P551427
33761	P551434
33767	P551435
33802	P551430
33808	P551425
33809	P551425
33842	P551421
33912	P551427
33973	P551425
33977	P551435
33978	P551422
33988	P551434
533537	P551424
533668	P551424
533680	P551434
SF10053	P551432
SF10084	P551433
WF10031	P551432
WF10053	P551432
WF10054	P551433
WF10084	P551433
WF10090	P551432
WF10158	P551433

FILTER SERVICING

1. Disconnect Water-In-Fuel (WIF) sensor if present – reconnect after servicing.
2. Unscrew the black retaining ring off the filter head and pull it down.
3. After the ring has been completely removed, pull the filter straight down.
Do not twist or turn the filter, as it is not threaded.
Properly dispose of the used filter according to local regulations.
4. Wipe filter head with a clean cloth.
5. Apply a thin film of clean motor oil to the gasket.
6. Push the new filter up to the filter head.
7. Hand tighten the retaining ring until it clicks.
8. Replace WIF sensor and water collection bowl gaskets if applicable.
9. Prime fuel system per manufacturer instructions.
10. Start engine and check for leaks.
11. Drain water daily.



Donaldson Company, Inc.
Minneapolis, MN

donaldsonfilters.com
donaldson.com
catalog.donaldson.com

United States and Canada 800-374-1374
Mexico, Latin America and
Caribbean +52-449-910-6150

Brochure No. F111293 ENG (7/16)
© 2016 Donaldson Company, Inc. All rights reserved.
Donaldson Company, Inc. reserves the right to change or
discontinue any model or specification at any time and
without notice. Printed in the U.S.A.